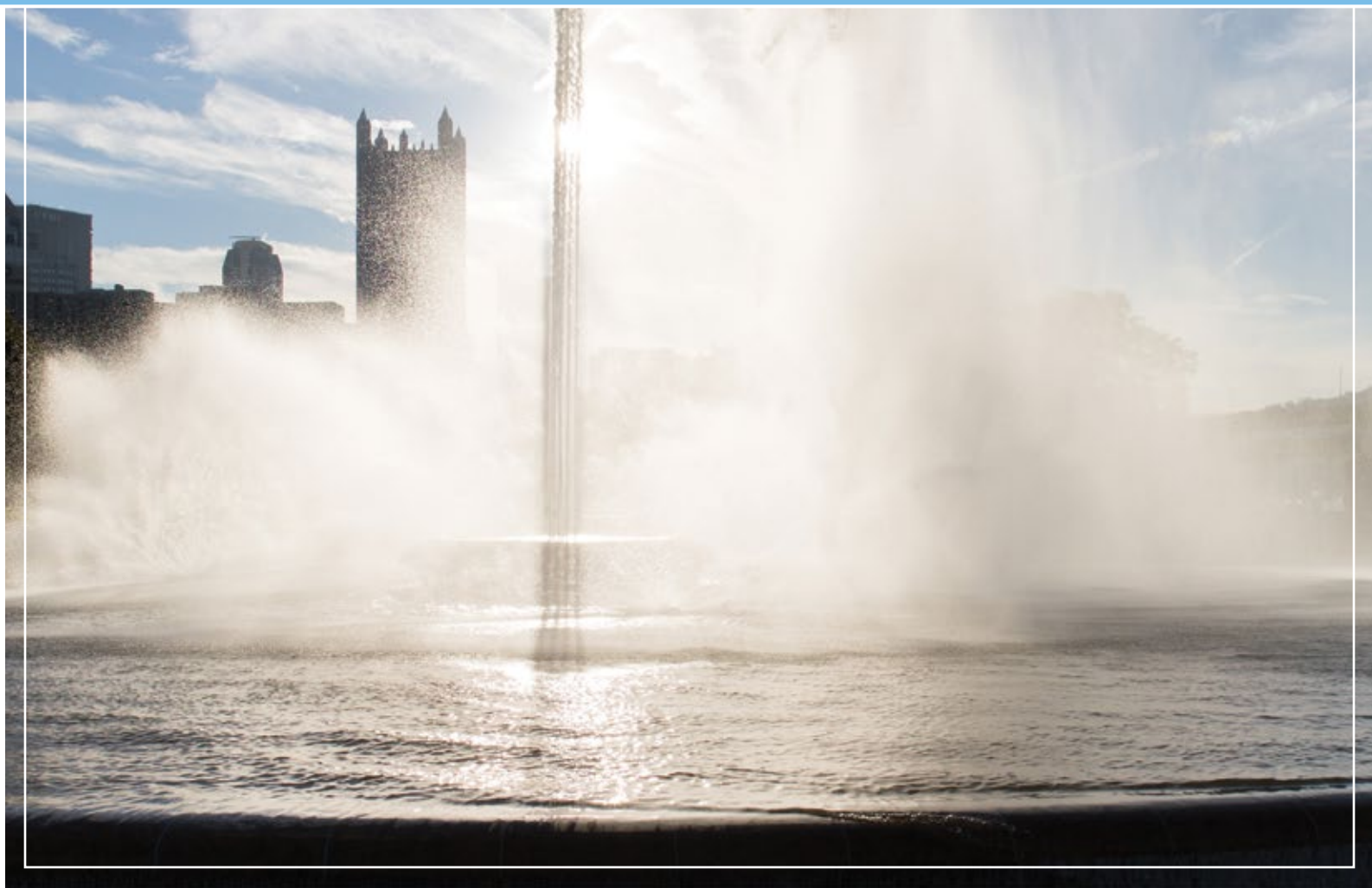




## THE POWER TO DO GREAT THINGS

Starts with a fund at The Pittsburgh Foundation





# THE POWER TO CHANGE LIVES AND COMMUNITIES

Are you ready to do great things with your philanthropy? The Pittsburgh Foundation has nearly 70 years of experience helping individuals and families make a lasting and powerful difference in the lives of others. As one of the nation’s largest community foundations, we are deeply connected to the most current thinking on effective giving and to the needs of Pittsburgh and the surrounding region. We can help you realize the power of charitable giving; customize a plan that matches your wishes; and open up the exciting and fulfilling world of philanthropy.



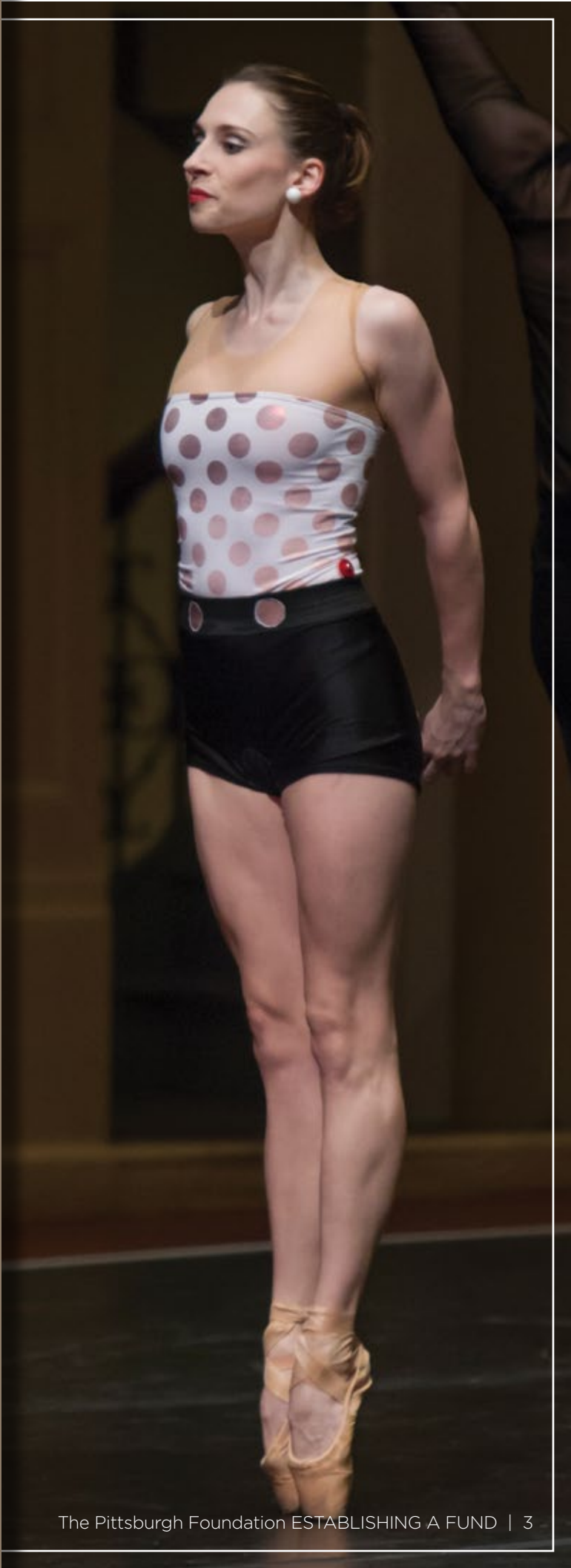
## WHAT WILL YOUR STORY BE?

Funds are established by donors who strive to make a difference in our community. Here are some of the great things our donors are doing with their funds.

- Supporting the arts
- Furthering education
- Performing cutting-edge research
- Helping animals
- Giving to the poor
- Conserving the environment
- Caring for the aged and neglected
- Providing services to youths and families
- Aiding our veterans
- Creating an unrestricted fund

## TABLE OF CONTENTS

|                                       |    |
|---------------------------------------|----|
| Why give?                             | 3  |
| Benefits of The Pittsburgh Foundation | 5  |
| Types of funds                        | 7  |
| Ways to establish a fund              | 9  |
| Donor stories                         | 11 |
| FAQs                                  | 15 |







## THE POWER TO LIVES AND COM

Are you ready to do great things? The Pittsburgh Foundation has near individuals and families make a difference in the lives of others. As one of our foundations, we are deeply committed to thinking on effective giving and the surrounding region. We can help your charitable giving; customize a plan and open up the exciting and fun



## THE POWER TO GIVE FOR MANY REASONS

There are many reasons for creating a fund at The Pittsburgh Foundation. The motivation of each donor is different, but the outcome is the same. Our donors make tremendous contributions to the community and make Pittsburgh a better place for all of us.

### WHY GIVE?

**CREATE A FAMILY LEGACY** Named funds at The Pittsburgh Foundation exist in perpetuity, creating a lasting legacy for donors and their families. These funds are a wonderful means to give back to the community in a way that is significant and permanent.

**LET US DO THE HARD WORK** Whether you establish a fund with a current or future gift (bequest), you have the help of our experienced staff to set up and administer your fund, manage its successful growth and ensure your charitable objectives are met.

**WATCH OUR COMMUNITY FLOURISH** The Pittsburgh Foundation is a permanent trust for the Pittsburgh community. Donors can be assured that the charities and causes they care about most receive the support they need – now and in the future. Additionally, the impact of donors is strengthened significantly when they join with the Foundation to help fund critical needs.

**GO WITH A RESPECTED LEADER** With nearly 70 years of experience as a steward of charitable gifts for the community, The Pittsburgh Foundation has set a standard for community foundations across the country.

**ENJOY TAX BENEFITS** Because we are a community foundation and a public charity, you will receive the maximum tax benefits permitted by law. Our philanthropic advisors can guide you through the many options available to you.

**MAKE YOUR GIFT WORK HARDER** We find every way possible to make the most of your charitable gift. And we pride ourselves on keeping our annual administration and investment management fees competitive with industry standards of both community foundations and commercial gift funds.





## THE POWER TO USE OUR EXPERIENCE

We manage more than 1,800 funds for people who share a passion for giving and a deep commitment to making this community better. Our professional staff can assist you and your professional advisors to create a plan that fulfills your philanthropic and financial goals. Whether it's supporting a favorite charitable program or teaching your children about philanthropy, we can provide advice, resources and options.



## BENEFITS OF THE PITTSBURGH FOUNDATION

### FLEXIBILITY

Donors can choose from nine different fund types and a wide range of fund options, from a Donor Advised Fund with a minimum of \$10,000, to a supporting organization, with a minimum of \$2 million.

### EASE OF ADMINISTRATION

We handle all the reporting, audits and necessary paperwork so our donors can focus on fulfilling and growing their philanthropy.

### PERSONALIZED SERVICES

We take service seriously. As a donor, you will be assigned a representative who will act as your liaison to answer all of your questions and provide you with customized support based on your needs and interests.

### DONOR RESOURCES

Through educational events and site visits, donors can learn more about the needs of the community and how to be more actively engaged in their philanthropy.

### ACCESS TO GRANTMAKING EXPERTISE

Our professional grantmaking staff is available to share their knowledge of community needs and to help donors decide where to invest their charitable dollars to achieve the greatest impact. We also offer site visits to area nonprofits that are of interest to donors.

### CENTER FOR PHILANTHROPY

This innovative resource from The Pittsburgh Foundation is designed for donors who wish to take a more active role in their philanthropy. Our philanthropic advisors work closely with donors to address critical issues in the community and we provide collaborative grantmaking opportunities, donor education and next generation engagement opportunities.

### FINANCIAL REPORTS

The foundation provides each donor with fund statements and investment summaries, showing the balance of their fund, amounts available for grantmaking, details on gifts and grants, and investment allocations and returns.

### ON-LINE SERVICES

"My Pittsburgh Foundation" is an exclusive on-line service that puts giving at your fingertips. You can make grant recommendations, see the market value of your fund, check on what is available for grantmaking, and more.

### RESEARCH SERVICES

Information about local nonprofits is offered through our PittsburghGives program ([www.pittsburghgives.org](http://www.pittsburghgives.org).) We can also assist you in creating a custom presentation of organizations serving your field of interest.

### CHARITABLE GIFT CARD

A gift card enables people to experience the joys of philanthropy by supporting an organization of their choice.

### WISH BOOK

The Pittsburgh Foundation Wish Book is published twice annually and provides individuals and families a unique opportunity to make a difference by purchasing tangible items of \$2,500 or less that are much needed by nonprofit organizations.





## THE POWER TO CHOOSE A FUND THAT IS BEST FOR YOU

We help people from all walks of life establish funds that are right for their financial situation, lifestyle, interests and goals.



## TYPES OF FUNDS AT THE PITTSBURGH FOUNDATION

### DONOR ADVISED FUNDS

- Allow donors to recommend grants to specific nonprofit organizations in the community, throughout the United States and other parts of the world.
- The original donor may determine what the purpose of the fund will be after the donor's death, or may appoint future advisors who will advise on its distribution annually.

### SCHOLARSHIP FUNDS

- Benefit students locally and throughout the United States.
- Elementary, high school, college, graduate or technical school students
- Donors may choose the type of assistance they would like to provide, i.e. tuition, the purchase of school-related equipment and supplies, etc.

### DESIGNATED FUNDS

- Allow donors to specify eligible, tax-exempt nonprofit organization(s) to receive annual grants in perpetuity.
- Should the organization(s) cease to exist after the donor's death, the Foundation will honor the donor's original intent by making grants to an existing organization with the same mission or purpose.

### FIELD OF INTEREST FUNDS

- These funds allow donors to provide grants to a broad area of concerns, including self sufficient individuals and families, healthy communities and a vibrant democracy.
- Specific charities would not be named, but all grants from the fund would be directed toward programs that address the field of the donor's interest within the region, unless otherwise specified.

### FAMILY FOUNDATION FUNDS

- Offer enhanced program expertise, strategic grantmaking, next generation engagement and legacy and succession planning services.
- Excellent resource for individuals with private foundations or those considering creating their own private foundation.

### AGENCY ENDOWMENT FUNDS

- Permanent endowments established by local nonprofit organizations and their donors provide ongoing support for the organization's programs.

### SUPPORTING ORGANIZATION

- Type I Supporting Organizations are an option for philanthropists making initial gifts of \$2 million or higher.

### MEDICAL RESEARCH FUNDS

- Permanent endowments established by donors to support investigation into the cause and cure of a variety of diseases and health conditions.

### UNRESTRICTED GRANTMAKING

- Donors can choose to have their financial gift placed in The Pittsburgh Foundation's Unrestricted Grantmaking Program.
- The staff of The Pittsburgh Foundation determine use of these funds based on the Foundation's three funding guideline categories: Self Sufficient Individuals and Families, Healthy Communities, and A Vibrant Democracy.
- We strive to match our donors' philanthropic goals with our community's most pressing charitable needs.

For a complete set of our Unrestricted Grantmaking Guidelines, please visit [www.pittsburghfoundation.org/grantmaking](http://www.pittsburghfoundation.org/grantmaking).



## THE POWER TO GIVE AS YOU WISH

There are many ways to make a charitable gift through The Pittsburgh Foundation. The Foundation is a trusted resource for donors and their professional advisors as they search for ways to give back to the community, while seeking maximum tax advantages. It is important to consider all the financial and tax implications of creating a fund. We will help you and your professional advisors create a plan that achieves your philanthropic, financial and estate planning goals.

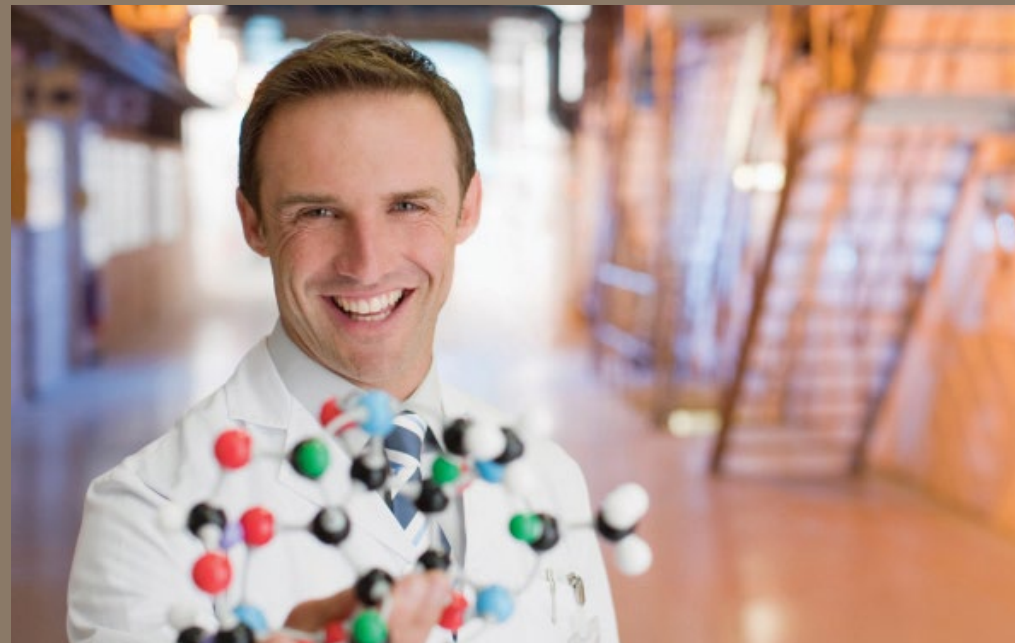


## WAYS TO ESTABLISH A FUND

### YOU CAN ESTABLISH A FUND AT THE PITTSBURGH FOUNDATION WITH:

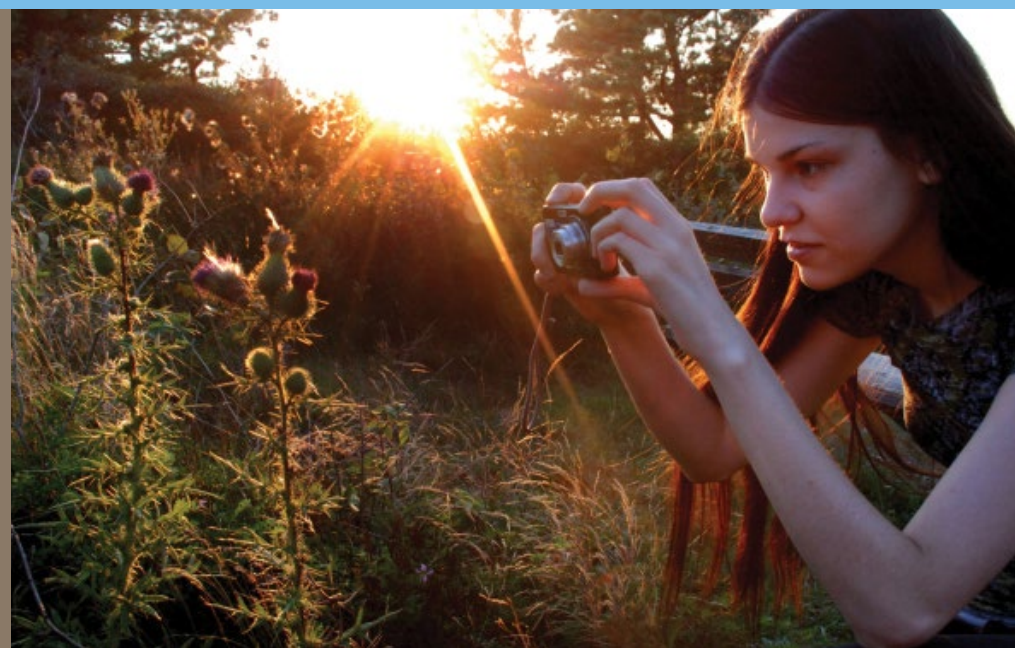
- Cash.
- Appreciated stock.
- Closely held stock – “C” corporations, “S” corporations, partnership interests and LLCs.
- Real estate or partial interest in real estate - you can also retain the right to live in the property during your lifetime.
- Transfer of a private or family foundation.
- Planned gifts (bequests) utilizing cash, appreciated stock, closely held stock, life insurance, real estate, and retirement fund assets such as 401ks and IRAs.
- A Charitable Gift Annuity that makes periodic payments to you as provided in the gift annuity agreement.
- A Charitable Remainder Trust (Annuity or Unitrust) in which you and/or others retain the right to receive income for life, or a period of years, with the remainder to be distributed to your fund at The Pittsburgh Foundation.
- A Charitable Lead Annuity Trust that makes a fixed annual payment to your fund at The Pittsburgh Foundation for a stated period of years, after which the remaining assets are transferred to your children or other named beneficiaries. The tax advantages are greatest when a trust is created while interest rates are low.



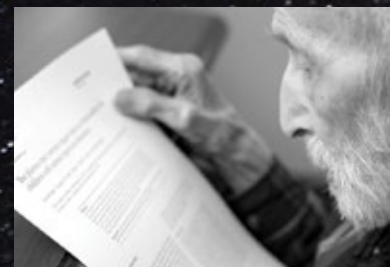


## THE POWER TO CREATE YOUR OWN LEGACY

The Pittsburgh Foundation offers a wide range of funds that give you the ability to use your good fortune to do great things.



## DONOR STORIES



### CHARLES E. KAUFMAN FOUNDATION

|                   |                                   |
|-------------------|-----------------------------------|
| Type of Fund:     | Supporting Organization           |
| Date Established: | 12/1/2005                         |
| Initial Gift:     | \$2,000,000                       |
| Bequest (2010):   | \$40,000,000                      |
| Grants to Date:   | Upwards of \$1.5 million per year |

Charles Kaufman passed away in September 2010, shortly after his 97th birthday, leaving his estate of almost \$50 million to the Foundation, of which approximately \$40 million was assigned to the Charles E. Kaufman Foundation to support new research initiatives at Pennsylvania institutions of higher learning in chemistry, biology and physics “for achievement in and contribution to the field and humanity.”

Mr. Kaufman amassed most of his wealth following his retirement as a chemical engineer. He dedicated this to his heartfelt ambition of one day helping to fund breakthrough scientific research and, ultimately, Nobel Prize-winners whose accomplishments would contribute significantly to the betterment and understanding of human life.

On July 25, 2013, The Charles E. Kaufman Foundation announced its first series of grants – amounting to almost \$1.6 million – to support cutting-edge scientific research at institutions across Pennsylvania.


The new grantmaking program, which became one of the major resources for scientific research in the Commonwealth of Pennsylvania, awards funding annually and is made possible by Mr. Kaufman’s gift, the biggest bequest to The Pittsburgh Foundation in its 68-year history.

“The Pittsburgh Foundation worked with Mr. Kaufman on this incredible idea to use science and the power of research to drive innovations for humankind,” said Grant Oliphant, The Pittsburgh Foundation’s President and CEO. “Mr. Kaufman was truly remarkable, his gift was extraordinary and we are privileged to carry forward his vision to advance the scientific frontiers in a variety of fields.”

“This is my way to give back. I can accomplish far more through others than I could ever do myself.” – Charles E. Kaufman

Further information on the Charles E. Kaufman Foundation is available at its website at: [kaufman.pittsburghfoundation.org](http://kaufman.pittsburghfoundation.org).






|                      |  |
|----------------------|--|
| Type of Fund:        | Scholarship                            |
| Date Established:    | 4/13/1956                              |
| Initial Gift:        | \$1,500                                |
| Market Value (2013): | \$36,000                               |
| Grants to Date:      | 38 individual grants totaling \$41,922 |

## WOMEN’S PRESS CLUB OF PITTSBURGH – GERTRUDE GORDON MEMORIAL FUND

### *The Power To Reward Students In Journalism*

In 1908 Gertrude Gordon gained attention as a daring young journalist. She was the first woman reporter to receive a byline in a Pittsburgh newspaper. In her honor, attorney Ben Paul Brassley, 117 friends of Mrs. Gordon and the Women’s Press Club established the Gertrude Gordon Memorial Fund to provide awards for talented and deserving women students in journalism in the Pittsburgh area. The organization, which started in 1891, is the oldest American women’s press club. Each year the Women’s Press Club runs a writing competition to determine the Gertrude Gordon contest winner. The contest is open to full-time undergraduate college students – sophomores, juniors and seniors – who are Western Pennsylvania residents or who attend a Western Pennsylvania college or university. The fund also helps to support other activities relating to women in the field of journalism as determined by the Women’s Press Club of Pittsburgh.



|                           |                                     |
|---------------------------|-------------------------------------|
| Type of Fund:             | Advised, second generation advisors |
| Date Established:         | 8/25/2004                           |
| Initial Gift:             | \$25,000                            |
| Additional Gifts to Date: | \$1,640,000                         |
| Market Value (2013):      | \$160,000                           |
| Grants to Date:           | 107 grants totaling \$1,655,151     |

## CAROL AND JOE MASSARO FAMILY FUND

### *The Power To Help Others In Many Ways*

The Massaros could have chosen to create their own private family foundation. Instead, in 2004 they decided to establish an advised fund at The Pittsburgh Foundation, initially with \$25,000. They continued to add to their fund and have awarded over \$1.6 million in grants. The couple grants to many charitable organizations in Pittsburgh, and with some of these they serve with their children on the boards, including Youthworks, Little Sisters of the Poor, City Theatre Company, Neighborhood Academy and Oakland Catholic High School. “We could have had our own foundation and we thought about that for about five seconds,” said Mr. Massaro.

“The Pittsburgh Foundation does everything the way it’s supposed to be done. I feel very comfortable having the Foundation handle our interests. It’s been a wonderful experience for us and the kids.”



|                      |                             |
|----------------------|-----------------------------|
| Type of Fund:        | Unrestricted                |
| Date Established:    | 6/21/1991                   |
| Initial Gift:        | \$37,306                    |
| Market Value (2013): | \$67,000                    |
| Grants to Date:      | 18 grants totaling \$53,323 |



|                      |                                  |
|----------------------|----------------------------------|
| Type of Fund:        | Unrestricted                     |
| Date Established:    | 12/20/1984                       |
| Initial Gift:        | \$100,000                        |
| Bequest (1991):      | \$15,000,000                     |
| Market Value (2013): | \$28,400,000                     |
| Grants to Date:      | 285 grants totaling \$19,444,316 |

## CHARLES HARBAUGH AND HELEN MASON MOORE FUND

### *The Power To Help The Community*

Established two years after the death of Charles Harbaugh Moore, this fund was established as unrestricted so that it could provide funds wherever the community need was greatest. Following the passing of her husband, Helen Mason Moore continued to be a force in the lives of others through the power of poetry. She celebrated the works of many famous poets through her work at The Ellis School, where she was a teacher and headmistress from 1958 to 1971. When the International Poetry Forum brought Princess Grace to Pittsburgh in 1978, Mrs. Moore chaired the committee that handled the dinner at the Carnegie. She was chosen to introduce the great poet W.H. Auden when he visited the poetry forum. In 1979, Governor Dick Thornburgh named her a Distinguished Daughter of Pennsylvania. And in 1987, she received Metropolitan Pittsburgh Public Broadcasting’s rarely given “Q Award for Excellence” for a radio series she produced. Mrs. Moore was 95 when she passed away, but both she and her husband will continue to help the community through their generous fund.

## LOIS TACK THOMPSON FUND

### *The Power To Envision A Better World*

“The Pittsburgh Foundation was made for a person like Lois Thompson,” a good friend of hers said. “She kept a low profile and she believed in community service and commitment.” Though born into wealth, she lived conservatively and managed her resources with care. A very private person, Lois spent her time with close friends and in quiet charitable pursuits. She loved all animals and her dogs were her constant concern and delight.

Always dignified and elegant, Lois took a no-nonsense approach to her charitable giving. She first established a fund with the Foundation for two specific purposes. She wanted to help groups that provided services to blind people, regardless of age, along with institutions that served unwanted animals. Upon her passing, Ms. Thompson left an additional bequest of \$15 million to The Pittsburgh Foundation. Her ability to see the power of giving will ensure that both people and animals get the help they need for years to come.





|                      |                                 |
|----------------------|---------------------------------|
| Type of Fund:        | Designated                      |
| Date Established:    | 7/22/1946                       |
| Initial Gift:        | \$275,232                       |
| Market Value (2013): | \$2,400,000                     |
| Grants to Date:      | 109 grants totaling \$3,364,593 |

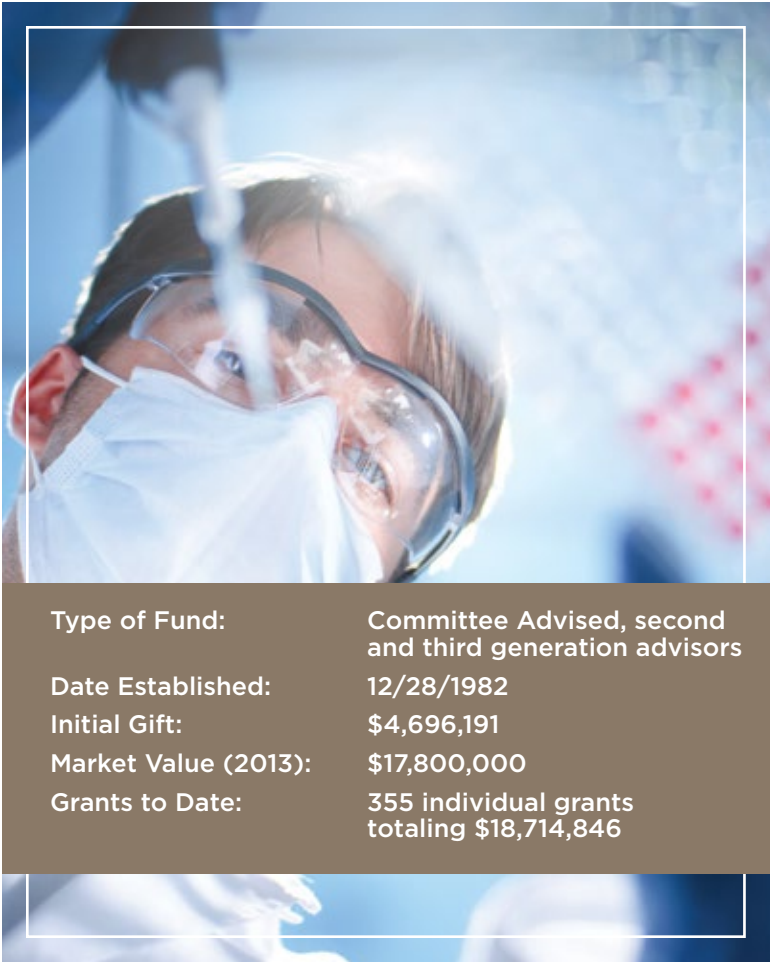
## EMMA W. LOCKE MEMORIAL FUND

### *The Power To Find The Joy In Giving*

In 1946 Charles A. Locke, a bachelor attorney, established a small award at the University of Pittsburgh in honor of his mother.

“I never knew how much fun it is to give money away until I saw the face of the young girl who won that award,” he said. “Then I knew that all the money in the bank wasn’t bringing me the happiness I wanted. Fate made me a wealthy attorney instead of the clergyman or teacher I wanted to be.” He used most of his fortune to establish the Emma W. Locke Memorial Fund and the rest to establish the Charles A. Locke Educational and Charitable Trust. Intrigued by such philanthropy, the newspapers described in detail how he gave up his automobile and his membership to the Duquesne and Rolling Rock Clubs and went to live at the YMCA. Wearing neatly patched suits he spoke frequently to rapt audience. “I tell them that selfishness is a cardinal sin. Oh I just raise hell about selfishness.”

The fund’s purpose calls for income to be distributed among the YMCA of Pittsburgh, the University of Pittsburgh/Emma W. Locke Memorial Award, and the Diocese of Pittsburgh (Protestant Episcopal).



|                      |   |
|----------------------|---|
| Type of Fund:        | Committee Advised, second and third generation advisors |
| Date Established:    | 12/28/1982  |
| Initial Gift:        | \$4,696,191   |
| Market Value (2013): | \$17,800,000  |
| Grants to Date:      | 355 individual grants totaling \$18,714,846             |

## FISHER FUND

### *The Power To Turn Family Fortunes Into Philanthropy*

The Fisher Fund was established by the Fisher Charitable Trust in 1982 after Fisher Scientific Corporation was purchased by Allied Corp. Founded by Pittsburgh entrepreneur Chester G. Fisher in 1902, Fisher Scientific was one of America’s leading companies specializing in test tubes, crucibles, Bunsen burners and numerous other laboratory supplies. Fisher was heralded for its sturdy goods backed by dependable service. Commercial and academic labs across the U.S. trusted the Fisher Scientific Catalog in the same way homeowners trusted the Sears Roebuck catalogue. After seven different mergers and acquisitions, the company restructured for the final time in 1991 and won back its independence with all of its stock publically traded under the name Fisher Scientific International.

Jim Fisher, the third of Chester G. Fisher’s three sons, believes his father’s company had a culture of aspiration, and this fund is a way to keep those aspirations alive through the support of many worthwhile initiatives in the community.

## THE POWER TO GET THE ANSWERS YOU NEED (FAQ)

IS THERE A MINIMUM GRANT SIZE?

We can process grants of \$200 or more.

WHEN CAN I START MAKING GRANTS?

You can start making grants immediately provided there are funds available in your grantmaking account.

WHAT TYPES OF ORGANIZATIONS OR PROGRAMS MAY I GRANT TO?

You may grant to any nonprofit organization in the United States with a 501(c)(3)-tax status or to foreign organizations with nonprofit equivalency. Most nonprofit organizations have this status. Our Grants Administration Department will determine the tax status of any potential grantee.

HOW OFTEN ARE GRANT CHECKS MAILED?

Grant checks are mailed weekly.

MAY I GRANT OUTSIDE ALLEGHENY COUNTY?

Yes. You may grant to any nonprofit organization in the United States, or to any organization that has an affiliate in the United States or abroad.

HOW CAN I ADD TO MY FUND’S ENDOWMENT?

You and others may add any amount to your fund, as often as, and whenever, you wish.

CAN I MAKE A STOCK GIFT?

Yes. In order to ensure that your gift is properly credited to your fund, please call your philanthropic advisor before making the transfer. Your representative can assist you with the process.

CAN I ADD MONEY TO MY GRANTMAKING AMOUNT?

You may add to your grantmaking account or to the principal of your fund at any time. Please indicate whether you want the gift credited to grantmaking or principal.

CAN I RECOMMEND MY FINANCIAL ADVISOR?

Yes. In addition to the Legacy Funds program, for donors with an existing investment advisory relationship, the Foundation may be able to work with that advisor either through the American Funds program or a customized approach.

CAN I TERMINATE MY FAMILY/ PRIVATE FOUNDATION INTO THE PITTSBURGH FOUNDATION?

Yes. Legacy and succession planning may be accomplished by transferring remaining assets into a Family Foundation Fund at The Pittsburgh Foundation.



|   | DONOR ADVISED<br>FUND OF THE<br>PITTSBURGH<br>FOUNDATION   | COMMERCIALY<br>AFFILIATED<br>CHARITABLE FUND   | FAMILY FOUNDATION<br>FUND OF THE<br>PITTSBURGH<br>FOUNDATION   | PRIVATE FOUNDATION   |
|---|--|--|--|--|
| MINIMUM<br>ENDOWMENT  | \$10,000   | Varies, \$5,000<br>to \$50,000   | \$250,000  | Council on Foundations<br>estimates a private<br>foundation is inefficient<br>when less than \$5m  |
| ADMINISTRATIVE FEES   | 1% < \$1m<br>.85% \$1m - \$2m<br>.70% \$2m - \$5m<br>.60% \$5m - \$10m<br>.50% > \$10m   | Vary, 0.60 to 2.5%<br>May include mark-up for<br>financial advisor   | 1% < \$1m<br>.85% \$1m - \$2m<br>.70% \$2m - \$5m<br>.60% \$5m - \$10m<br>.50% > \$10m   | Vary   |
| INVESTMENT<br>MANAGEMENT FEES                                     | .18% to 1.25% (based<br>on investment<br>portfolio selected)   | Vary, 0.30 to 2.0%   | .18% to 1.25% (based<br>on investment portfolio<br>selected)   | Vary, based on investment<br>management  |
| OTHER FEES  | No additional fees   | No additional fees   | No additional fees   | <ul style="list-style-type: none"><li>• Recordkeeping fees</li><li>• Accounting fees</li><li>• Tax and audit preparation</li></ul>   |
| EXCISE TAXES  | None   | None   | None   | 2% of net investment<br>income annually  |
| VALUATION OF GIFTS  | Fair market value  | Fair market value  | Fair market value  | <ul style="list-style-type: none"><li>• Fair market value for<br/>publicly traded stock</li><li>• Cost basis for all other<br/>gifts, including closely<br/>held stock and real<br/>property</li></ul>   |
| TAX DEDUCTION<br>LIMITS FOR GIFTS<br>OF CASH                      | 50%  | 50%  | 50%  | 30%  |
| TAX DEDUCTION<br>LIMITS FOR GIFTS<br>OF STOCK OR REAL<br>PROPERTY | 30%  | 30%  | 30%  | 20%  |
| GRANTMAKING   | <ul style="list-style-type: none"><li>• Donor/Advisor<br/>recommends grants to<br/>any 501(c)(3) in U.S. or<br/>international, approval<br/>required by TPF Board</li><li>• Grant checks cut weekly</li><li>• Ability to distribute grants<br/>from principal</li><li>• No minimum payout</li><li>• Expertise of TPF staff<br/>available for consultation</li><li>• Built in peer networking</li><li>• Personal donor services<br/>representative</li><li>• Informational sessions and<br/>activities on charitable<br/>organizations and issues</li></ul> | <ul style="list-style-type: none"><li>• Donor/Advisor<br/>recommends grants,<br/>approval required by<br/>CACF trustees</li><li>• No personal<br/>representative</li><li>• Many require 5%<br/>minimum payout</li><li>• No consultation</li></ul>  | <ul style="list-style-type: none"><li>• Donor/Advisor<br/>recommends grants to<br/>any 501(c)(3) in U.S.,<br/>approval required by<br/>TPF Board</li><li>• Grant checks cut weekly</li><li>• Ability to distribute grants<br/>from principal</li><li>• No minimum payout</li><li>• Expertise of TPF staff<br/>available for consultation</li><li>• Built in peer networking</li><li>• Personal donor services<br/>representative</li><li>• Informational sessions and<br/>activities on charitable<br/>organizations and issues</li><li>• Donor may recommend<br/>investment manager<br/>(Subject to approval<br/>by The Pittsburgh<br/>Foundation Investment<br/>Committee)</li></ul> | <ul style="list-style-type: none"><li>• Donor appoints<br/>board, which controls<br/>grantmaking</li><li>• Restrictions on<br/>scholarship and<br/>research grants</li><li>• 5% minimum payout<br/>required</li><li>• Grantmaking services<br/>fee based</li><li>• Donor education<br/>fee based</li></ul> |
| FUTURE PURPOSE /<br>LEGACY PLANNING                               | Donors may determine<br>future purpose in the<br>fund agreement naming<br>individual charities to<br>receive annual grants in<br>perpetuity, donor may<br>name areas of interest<br>and TPF Program staff<br>will award grants in<br>named areas, or successor<br>advisors.  | <ul style="list-style-type: none"><li>• Fund is split between<br/>named successors.</li><li>• If minimum is not<br/>achieved, remaining<br/>balance must be granted<br/>out in 90 days or fund<br/>balance will be added to<br/>unrestricted charitable gift<br/>pool directed by CACF<br/>trustees.</li></ul> | Donors may determine<br>future purpose in the<br>fund agreement naming<br>individual charities to<br>receive annual grants in<br>perpetuity, donor may<br>name areas of interest<br>and TPF Program staff<br>will award grants in<br>named areas, or successor<br>advisors.  | Family involvement in<br>perpetuity, no restrictions.  |





Five PPG Place  
Suite 250  
Pittsburgh, PA 15222  
(412) 394-2653  
[www.pittsburghfoundation.org](http://www.pittsburghfoundation.org)



Greensburg Garden & Civic Center  
951 Old Salem Road  
Greensburg, PA 15601  
(724) 836-4400  
[www.cfwestmoreland.org](http://www.cfwestmoreland.org)