



THE PITTSBURGH FOUNDATION

Welcome to 912

Image by Josh Franzos.





Image by Josh Franzos.

THE PITTSBURGH FOUNDATION

Events at 912

Thank you for considering The Pittsburgh Foundation for your event!

Our flexible event and meeting spaces bring people together. Whether you're planning an event for a nonprofit, corporation, civic organization, trade group or others, we offer you versatile meeting, retreat and event spaces that naturally inspire people to build lasting connections and establish partnerships.

Located in downtown Pittsburgh at the riverfront edge of the Cultural District, our offices are steps from parking, Arts Landing—Downtown's new outdoor civic space, restaurants and hotels. A panoramic view provides a unique perspective of our skyline, bridges, rivers and stadiums.

We are excited to welcome you

Table of Contents

Rental Rates	3
Floor 10 Map	6
Event and Meeting Space	7
Furnishings	13
Transportation and Parking	15
Caterers	16
Restaurants	18
Bar Services	21
Coffee	22
Hotels	23
Event Production Services	25
Event Rentals	24
Service Drop Off Instructions	27
Insurance Requirements	28

To learn more about renting meeting and event spaces at The Pittsburgh Foundation, please email event@pghfdn.org.



Image by Josh Franzos.

Rental Rates

The Pittsburgh Foundation's new and welcoming space focuses on fostering partnerships with stakeholders and engaging new audiences to enhance collective impact.

The Foundation offers versatile meeting, project, and event spaces intended to bring together donors, organizers, activists, grantees, and others to collaborate on solutions. We are excited to welcome our friends, neighbors, and partners.

The fee structure was established to help offset the wear and tear associated with use of the event space while also advancing the Foundation's commitment to equitable access. Revenue generated through these fees creates a pool of funds that can be used to subsidize event costs for nonprofit organizations with annual operating budgets under \$5 million. This approach enables the Foundation to offer the space to qualifying nonprofits at significantly reduced rates, ensuring that organizations with more limited financial resources can benefit from access to a high-quality venue while supporting the long-term sustainability of the facility.

Marquee Spaces: The Point, Confluence and Roof Terrace

For events held in the Point and/or Confluence from Monday to Friday, rental includes onsite staffing—one Foundation staff member for every 50 attendees, with a maximum of 130 attendees. There is a two-hour minimum from setup to close. Self-serve audio-visual equipment is available for a setup fee and with a security deposit. Renters will have access to the space two hours prior to the scheduled event. Both renters and vendors must exit within one hour of the event's scheduled end time, as outlined in the Signature Event Order and Rental Agreement. Additionally, rental items must be picked up within one hour of the event's conclusion unless other arrangements have been made with The Pittsburgh Foundation in advance.

Nonprofit Rates

Substantial discounts are available for small to mid-sized non-profits with budgets under \$5 million. Non-profits with annual operating budgets under \$5 million will be charged a \$100.00 room rental rate along with any additional fees. To learn more about rental rates for non-profits, please contact Taren Lumley or Matt Nienhuis at event@pghfdn.org or call 412.394.2622.

Marquee Spaces

Weekday Half Day	\$1,250.00
Weekday Full Day	\$2,500.00
Weekday Evening	\$2,500.00
Rooftop Terrace	\$3,750.00

Rental Rates

Half Day Rate

- \$1,250.00 for four hours, plus a two hour set up window and one hour teardown window.
- Between 8:00 a.m. and 5:00 p.m.

Full Day Rate

- \$2,500.00 for events longer than four hours plus a two hour set up window and one hour teardown window.
- Between 8:00 a.m. and 5:00 p.m.

Evening Rate

- \$2,500.00 for four hours, plus a two hour set up window and one hour teardown window.
- Between 5:00 p.m. and 9:00 p.m.

Rooftop Terrace Rate

For events where the entirety of the event will take place on the roof terrace, weather permitting. Any changes to the date must be submitted in writing at least one week prior to the scheduled event date. In the event of inclement weather, the Host will be given access to The Point and Confluence for the event. Changes due to weather shall result in the forfeiture of any pre-paid fees.

- \$3,750.00 for four hours, plus a two hour set up window and one hour teardown window.

Non Marquee Spaces

For events with 20 attendees or fewer that are held in a room other than The Point, Confluence or the Roof Terrace.

- \$250.00.
- Monday through Friday between 8:00 a.m. and 5:00 p.m.



Image by Josh Franzos.

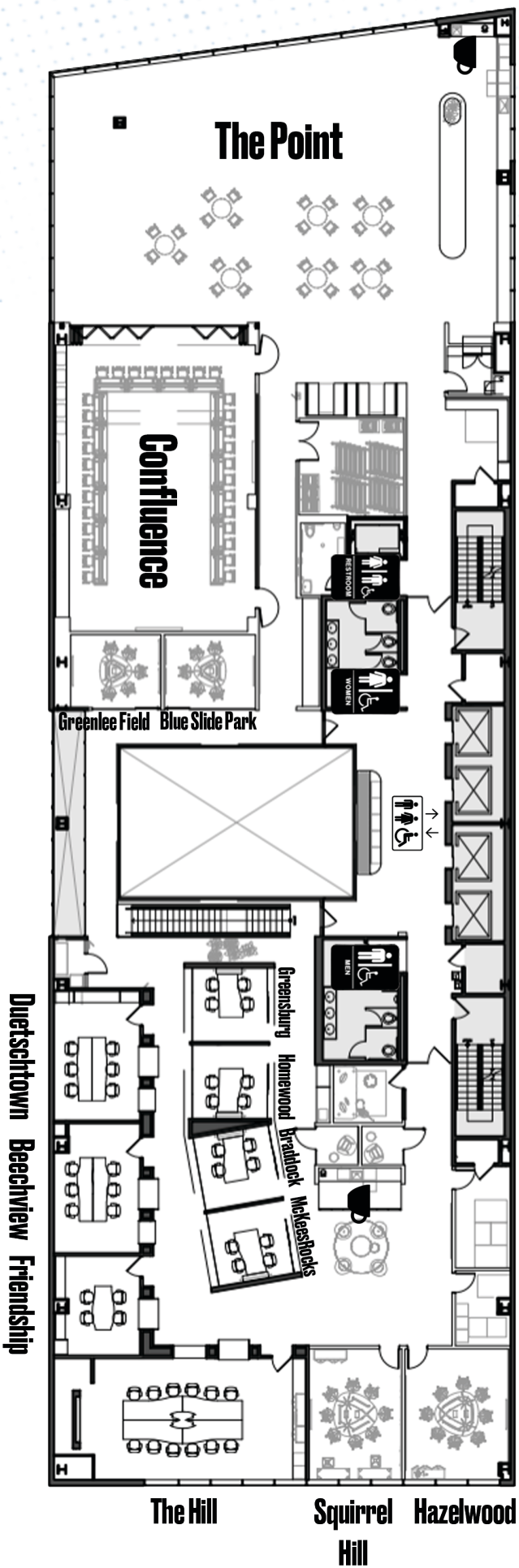
Rental Rates

Add-On Fees

To help ensure your event runs smoothly, select additional service fees may apply beyond the room rental rate based on the unique needs of your event and operational support required. These fee-for-service charges are determined according to event needs and are separate from rental costs. Please note that these services are not eligible for discounted rates, and certain required fees are mandatory and nonnegotiable.

Item	Description	Cost
Roof Terrace - Standard Rate	Access to the roof terrace in addition to an event in one of marquee or non-marquee spaces on the 10th floor.	\$1,000.00
Roof Terrace - Nonprofit Rate	Access to the roof terrace in addition to an event in one of marquee or non-marquee spaces on the 10th floor for non-profit organizations with annual operating budgets of \$5 million and under.	\$100.00
A/V Equipment	Use of any of the Foundation's A/V equipment in the Point and/or Confluence.	\$425.00
Security	For events that start or end outside of the regularly contracted hours between Elmhurst and Black Knight Security (7:00 a.m. to 7:00 p.m. Monday through Friday, and 9:00 a.m. to 12:00 p.m. on Saturday), an additional cost is incurred for security services. Security is required for the duration of the event as well as setup and teardown windows.	\$41.55 per hour. Minimum of four hours.
Cleaning	Cleaning support provided by St. Moritz building Services for events. Cleaning needs are determined on a case-by-case basis.	Quotes are provided based on event needs.

Floor 10



Event and Meeting Space



The Point

Large community space.

Capacity: 40 to 100.

Features:

- Two drop down screens.
- Two ceiling mounted projectors.
- One lectern microphone.
- One lavalier microphone.
- One CatchBox microphone.
- One podium.
- Adjustable furnishings.
- Can be combined with Confluence to expand capacity.
- Video conferencing.



Confluence Boardroom

Large board room.

Capacity: 20 to 80.

Features:

- Three wall mounted monitors.
- One lectern microphone.
- One lavalier microphone.
- One Catchbox microphone.
- One podium.
- Adjustable furnishings.
- Can be combined with the Point to expand capacity.
- White boards.
- Video conferencing.

Event and Meeting Space



The Hill

Meeting room.

Capacity: 12 to 20.

Features:

- Whiteboards.
- Clickshare screensharing.
- Video conferencing.



Greenlee Field

Project room.

Capacity: 5.

Features:

- Whiteboards.
- Clickshare screensharing.
- Video conferencing.

Blue Slide Park

Project room.

Capacity: 5.

Features:

- Whiteboards.
- Clickshare screensharing.
- Video conferencing.



Event and Meeting Space



Deushtown

Meeting room.

Capacity: 6.

Features:

- Whiteboards.
- Clickshare screensharing.
- Video conferencing.



Friendship

Project room.

Capacity: 4.

Features:

- Whiteboards.
- Clickshare screensharing.
- Video conferencing.

Beechview

Meeting room.

Capacity: 6.

Features:

- Whiteboards.
- Clickshare screensharing.
- Video conferenceing.



Event and Meeting Space



Homewood

Project room.

Capacity: 4.

Features:

- Clickshare screensharing.
- Video conferencing.



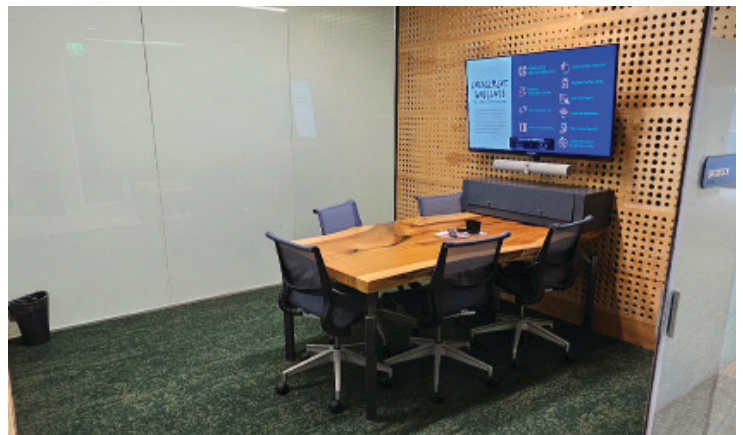
Greensburg

Project room.

Capacity: 4.

Features:

- Clickshare screensharing.
- Video conferencing.



Braddock

Project room.

Capacity: 4.

Features:

- Clickshare screensharing.
- Video conferencing.

Event and Meeting Space



McKees Rocks

Project room.

Capacity: 4.

Features:

- Clickshare screensharing.
- Video conferencing.



Squirrel Hill

Project room.

Capacity: 8.

Features:

- Whiteboards.
- Clickshare screensharing.
- Video conferencing.

Hazelwood

Project room.

Capacity: 8.

Features:

- Whiteboards.
- Clickshare screensharing.
- Video conferencing.





Roof Terrace

See our community in a new light from our spectacular roof terrace! Gather above it all with city and river views, perfect for inspiring connection and celebration. Elevate your next event in a space where every moment is unforgettable.

Capacity: 50.

Features:

- Counters with sink.



Furnishings

Imager by Josh Franzos.

Tables

Location	Item	Color	Number	Movable	Number Seated	Length	Width	Height	Outlets
The Point	Round Tables	White	7	Yes	5	41.5"	41.5"	30.5"	No
The Point	Rectangular Banquet Tables	Wood Grain	3	No	8	120"	29.5"	29.5"	No
The Point	Rectangular Banquet Tables	Wood Grain	3	No	6	90"	30"	42.5"	No
The Point	Booth Table	White	2	No	4	56"	28"	29.5"	Yes
The Point	Peach Pit Table	White	1	No	8	60"	60"	28.5"	Yes
Confluence	Rectangular Flip-Top Table	White	24	Yes	2	60"	24"	28"	No
Roof Terrace	Picnic Table	White and Slate	2	No	8	94"	36"	40"	No
Roof Terrace	Picnic Table	White and Slate	2	No	8	94"	48"	30.5"	No
Roof Terrace	Cocktail Tables	White	4	No	2	31"	31"	42"	No
Roof Terrace	Coffee Table	White	1	No	4	40"	40"	15"	No
Roof Terrace	Square Banquet Table	White	3	No	4	37"	37"	29"	No
Roof Terrace	Ottoman	White	3	Yes	N/A	24"	24"	22"	No

Furnishings

Chairs

Location	Item	Color	Number	Height	Width	Depth
The Point/ Confluence	Muto Cover Side Chair	Beige	90	18"	21.1"	19.3"
The Point	Muto Cover Side Chair	Green	24	18"	21.1"	19.3"
The Point/ Confluence	Muto Cover Stool	Green	8	26"	19.7"	21.6"
The Point	Muto Cover Stool	Green	18	30"	19.7"	21.6"
Roof Terrace	Stool	Orange	13	29"	16"	17"
Roof Terrace	Adirondack Chair	Blue	4	18"	22"	22"
Roof Terrace	Chair	White	12	18"	20"	16"

Transportation and Parking

Parking

SMITHFIELD-LIBERTY GARAGE

111 9th Street, Pittsburgh, PA 15222

pittsburghparking.com

Electric vehicle charging stations available.

GRANT STREET TRANSPORTATION CENTER

55 11th Street, Pittsburgh, PA 15222

pittsburghparking.com

Electric vehicle charging stations available.

CONVENTION CENTER GARAGE

139 10th Street, Pittsburgh, PA 15222

alcoparking.com

Electric vehicle charging stations available.

Accessible parking spots available.

BENEDUM LOT

7th Street and Penn Avenue, Pittsburgh, PA 15222

alcoparking.com

THEATER SQUARE GARAGE

667 Penn Avenue, Pittsburgh, PA 15222

alcoparking.com

GOLD 1 GARAGE (NORTH SHORE)

792 West General Robinson Street, Pittsburgh, PA 15212

alcoparking.com

Electric vehicle charging stations available.

Accessible parking spots available.

NORTH SHORE GARAGE

20 E. General Robinson Street, Pittsburgh, PA 15212.

alcoparking.com

Accessible parking spots available.

Public Transportation

PITTSBURGH REGIONAL TRANSIT

rideprt.org

Taxi Services

STAR TRANSPORTATION GROUP

724.776.0044

star-limo.com

ZTRIP

412.777.7777

ztrip.com



Caterers

BAKERSFIELD

bakersfielddacos.com

412.586.5024

BEYOND BLESSED CATERING

beyondblessedcatering.com

412.689.4602

Beyondblessedcatering18@gmail.com

BISTRO TO GO

bistroandcompany.com

412.231.0218

cater@bistro-togo.com

BLACK RADISH KITCHEN

blackradishkitchen.com

412.223.7160

info@blackradishpgh.com

BOUJI BITES

boujibites.biz

412.347.5028

catering@boujibites.biz

CAFÉ MOMENTUM

cafemomentum.org/restaurant/Pittsburgh

412.315.7765

jade@cafemomentumpgh.org

CAFE NIKKI P

cafenikkip.com

412.298.0036

produceplaya@cafenikkip.net

CHICKEN LATINO

chickenlatino.net

412.246.0974

chickenlatino@yahoo.com

COBBLER WORLD

cobblersworld.com

412.584.2105

contactus@cobblersworld.com

COMMON PLEA CATERING

thecommonplea.com

412.281.5140

info@thecommonplea.com

COMMUNITY KITCHEN

ckpgh.org

412.246.4736

info@ckpgh.org

DIRTY BIRDS CHICKEN

Facebook

Instagram

dirtybirdschicken@gmail.com

DIVINE DELECTABLES

divine-delectables.com

412.726.2893

paulette@divine-delectables.com

ELEGANT EDGE CATERING

elegantedgecateringcompany.com

412.385.2332

elegantedgecatering@gmail.com

THE FLUTED MUSHROOM

flutedmushroom.com

412.381.1899

peter@flutedmushroom.com

HOUSE OF SOUL CATERING

houseofsoulcateringllc.com

412.461.5000

houseofsoulcatering@gmail.com

ROXANNE'S CATERING

rsecatering.com

412.606.5938

info@rsecatering.com

SAUSALIDO

sausalido.net

412.683.4575

sausalido@live.com

SPREZZATURA

sprezzaturapgh.com

412.266.4424

sprezzaturapgh@gmail.com

Caterers

VEGGIES N'AT

veggiesnat.com





Restaurants

ALTA VIA

Two PPG Place, Pittsburgh, PA 15222

412.981.5155

altaviapgh.com/market-square

ART AND SOUL CAFÉ

1125 Penn Avenue, Pittsburgh, PA 15222

412.224.2552

gistcateringartandsoulcafe.com

AUGUST HENRY'S BURGER BAR

946 Penn Avenue, Pittsburgh PA 15222

412.765.3270

augusthenrys.com

BAKERSFIELD

940 Penn Avenue, Pittsburgh, PA 15222

412.586.5024

bakersfielddacos.com

BARCELONA WINE BAR

922 Penn Ave, Pittsburgh, PA 15222

412.525.7722

barcelonawinebar.com

BILL'S BAR & BURGER

1001 Liberty Avenue, Pittsburgh, PA
15222

412.567.2300

billsbarandburger.com

BRIDGES & BOURBON

930 Penn Avenue, Pittsburgh, PA 15222

412.586.4287

bridgesandbourbonpgh.com

COBBLER WORLD

1059 Penn Avenue, Pittsburgh, PA 15222

412.403.2158

[places.singleplatform.com/cobblerworld-0/
menu?ref=google](http://places.singleplatform.com/cobblerworld-0/menu?ref=google)

CAFÉ MOMENTUM

268 Forbes Avenue, Pittsburgh, PA 15222

412.315.7765

cafemomentum.org/restaurant/pittsburgh/

THE CAPITAL GRILLE

301 Fifth Avenue, Pittsburgh, PA 15222

412.338.9100

thecapitalgrille.com

CHIPOTLE MEXICAN GRILL

211 Forbes Avenue, Pittsburgh, PA 15222

412.224.5586

CITY WORKS

Two PPG Place, Pittsburgh, PA 15222

412.448.2900

cityworksrestaurant.com

THE COMMONER

620 William Penn Place, Pittsburgh, PA
15219

412.230.4800

thecommonerpgh.com

CONDADO TACOS DOWNTOWN

971 Liberty Avenue, Pittsburgh, PA 15222

412.281.9111

condadotacos.com

DEL FRISO'S DOUBLE EAGLE STEAKHOUSE

455 Fifth Avenue, Pittsburgh, PA 15219

412.240.6140

delfriscos.com

THE EAGLE

737 Penn Avenue, Pittsburgh, PA 15222

412.688.6350

eaglerestaurant.com

Restaurants

EDDIE MERLOT'S

444 Liberty Avenue, Suite 100,
Pittsburgh, PA 15222

412.235.7676

eddiemerlots.com/Pittsburgh

EDDIE V'S PRIME SEAFOOD

501 Grant Street # 100, Pittsburgh, PA
15219

412.391.1714

eddiev.com

FL. 2

510 Market Street, Pittsburgh, PA 15222

412.773.8800

fl2pgh.com

FOGO DE CHÃO

525 Smithfield Street, Pittsburgh, PA
15222

412.312.5001

fogodechao.com

HELLO BISTRO

292 Forbes Avenue, Pittsburgh PA 15222

412.434.0100

hellobistro.com

JIMMY JOHN'S

1027 Penn Avenue, Pittsburgh, PA 15222

412.224.6440

jimmyjohns.com

NICKY'S THAI KITCHEN

903 Penn Avenue, Pittsburgh PA 15222

412.471.8424

nickysthaikitchen.com

LAS VELAS

21 Market Square, Pittsburgh, PA 15222

412.251.0031

MCCORMICK & SCHMICK'S SEAFOOD & STEAKS

301 Fifth Ave, Pittsburgh, PA 15222

412.201.6992

mccormickandschmicks.com

MEAT AND POTATOES

649 Penn Avenue, Pittsburgh, PA 15222

412.325.7007

meatandpotatoespgh.com

MOE'S SOUTHWEST GRILL

210 Forbes Ave, Pittsburgh, PA 15222

412.224.4422

MORTON'S THE STEAKHOUSE

625 Liberty Avenue, Suite 180,
Pittsburgh, PA 15222

412.261.7141

[mortons.com/location/mortons-the-
steakhouse-pittsburgh-pa](http://mortons.com/location/mortons-the-steakhouse-pittsburgh-pa)

NOODLES & CO.

3805 Forbes Avenue, Pittsburgh, PA
15213

412.621.0890

noodles.com

PIZZA BARI HALAL

955 Liberty Avenue, Pittsburgh, PA 15222

412.402.0444

pizzabariipgh.com

PIZZAIOLO PRIMO

8 Market Square, Pittsburgh, PA 15222

412.575.5858

pizzaioloprimo.com

PIZZA PARMA

936 Liberty Avenue, Pittsburgh, PA 15222

412.577.7300

downtown.pizzaparma.us

PROPER BRICK OVEN & TAP ROOM

139 7th Street, Pittsburgh, PA 15222

412.281.5700

properpittsburgh.com

REVEL

242 Forbes Avenue, Pittsburgh, PA 15222

412.281.1134

revelpgh.com

Restaurants

RITUAL HOUSE

524 William Penn Place, Pittsburgh, PA
15219

412.904.2002

ritualhousepgh.com

SALLY ANN'S

136 6th Street, Pittsburgh, PA 15222

412.338.1876

sallyannspgh.com

SIENNA MERCATO

942 Penn Avenue, Pittsburgh, PA 15222

412.281.2810

siennamercato.com

SREE'S FOODS

808 Penn Avenue, Pittsburgh, PA 15222

412.860.9181

sreesfoods.com

THE STANDARD MARKET & PINT HOUSE

947 Penn Avenue, Pittsburgh, PA 15222

412.224.2462

standardpgh.com

SUBWAY

411 Seventh Avenue, Pittsburgh, PA
15219

412.391.3177

subway.com

TÄKO

6th Street, Pittsburgh, PA 15222

412.471.8256

takopgh.com

VALLOZZI'S PITTSBURGH

220 Fifth Avenue, Pittsburgh, PA 15222

412.394.3400

vallozzis.com

VILLA REALE

628 Smithfield Street, Pittsburgh, PA
15222

412.391.3963

villarealepizzeria.com

THE WARREN BAR & BURROW

245 7th Street, Pittsburgh, PA 15222

412.201.5888

thewarrenpgh.com

THE YARD

100 Fifth Avenue, Pittsburgh, PA 15222

412.291.8182

theyardpgh.com

YUZU KITCHEN

409 Wood Street, Pittsburgh, PA 15222

412.288.9900

yuzukitchenpgh.com



Bar Services

ACE BARTENDING

acebartenders.com

412.251.2788

info@acebartenders.com

LO BAR COCKTAIL SERVICES

lobarcocktailservices.com

MINDFUL HOSPITALITY GROUP

themindfulhospitalitygroup.com

info@mindfulhospitalitygroup.com

MIXED MOMENTS

mixed-moments.com

412.444.8511

Info@mixed-moments.com



Coffee

THE COFFEE VILLAGE

801 Liberty Avenue, Pittsburgh, PA 15222

412.586.5750

coffeevillages.com

DE FER COFFEE & TEA

725 Penn Avenue, Pittsburgh, PA 15222

defer.coffee

DUNKIN'

601 Grant Street, Pittsburgh, PA 15219

412.281.4070

dunkindonuts.com

EINSTEIN BROS. BAGELS

436 Seventh Avenue, Pittsburgh, PA

15219

einsteinbros.com

LA PRIMA ESPRESSO COMPANY

1100 Smallman Street, Pittsburgh, PA

15222

412.679.1106

laprima.com

MELLON SQUARE COFFEE

530 William Penn Place, Pittsburgh, PA

15219

412.281.7100

NIKO'S COFFEE

1125 Penn Avenue, Pittsburgh, PA 15222

412.251.0124

STARBUCKS

1001 Liberty Avenue, Pittsburgh, PA

15222

412.560.6334

starbucks.com

STARBUCKS

202 6th Street, Pittsburgh, PA 15222

412.281.2380

starbucks.com

STARBUCKS

600 Grant Street, Pittsburgh, PA 15219

412.765.3125

starbucks.com



Hotels

FAIRMONT PITTSBURGH

510 Market Street, Pittsburgh, PA 15222

412.773.8800

fairmont.com

HILTON GARDEN INN PITTSBURGH DOWNTOWN

250 Forbes Avenue, Pittsburgh, PA 15222

412.281.5557

hilton.com

THE INDUSTRIALIST HOTEL, PITTSBURGH, AUTOGRAPH COLLECTION

405 Wood Street, Pittsburgh, PA 15222

412.430.4444

marriott.com

FAIRFIELD INN & SUITES PITTSBURGH DOWNTOWN

435 Fort Pitt Boulevard, Pittsburgh, PA
15219

412.515.2100

marriott.com

JOINERY HOTEL PITTSBURGH, CURIO COLLECTION BY HILTON

453 Boulevard of the Allies, Pittsburgh,
PA 15219

412.339.1870

hilton.com

EVEN HOTEL PITTSBURGH DOWNTOWN, AN IHG HOTEL

425 Forbes Avenue, Pittsburgh, PA 15219

412.301.2277

ihg.com

EMBASSY SUITES BY HILTON PITTSBURGH DOWNTOWN

535 Smithfield Street, Pittsburgh, PA
15222

412.338.2200

hilton.com

KIMPTON HOTEL MONACO PITTSBURGH

620 William Penn Place, Pittsburgh, PA
15219

412.471.1170

monaco-pittsburgh.com

PITTSBURGH MARRIOTT CITY CENTER

112 Washington Place, Pittsburgh, PA
15219

412.471.4000

marriott.com

THE WESTIN PITTSBURGH

1000 Penn Avenue, Pittsburgh, PA 15222

412.281.3700

marriott.com

HOMEWOOD SUITES BY HILTON PITTSBURGH DOWNTOWN

1410 Smallman Street, Pittsburgh, PA
15222

412.232.0200

hilton.com

CAMBRIA HOTEL PITTSBURGH - DOWNTOWN

1320 Centre Avenue, Pittsburgh, PA
15219

412.381.6687

choicehotels.com

RESIDENCE INN PITTSBURGH NORTH SHORE

574 W. General Robinson Street,
Pittsburgh, PA 15212

412.321.2099

marriott.com

SPRINGHILL SUITES PITTSBURGH NORTH SHORE

223 Federal Street, Pittsburgh, PA 15212

412.323.9005

marriott.com

COMFORT INN & SUITES PITTSBURGH NORTH SHORE

820 E. Ohio Street, Pittsburgh, PA 15212

412.887.1205

choicehotels.com



Hotels

HYATT PLACE PITTSBURGH-NORTH SHORE

260 N. Shore Drive, Pittsburgh, PA 15212
412.321.3000

hyatt.com

WYNDHAM GRAND PITTSBURGH DOWNTOWN

600 Commonwealth Place, Pittsburgh, PA 15222
412.391.4600

wyndhamhotels.com

RENAISSANCE PITTSBURGH HOTEL

107 6th Street, Pittsburgh, PA 15222
412.562.1200

marriott.com

COURTYARD PITTSBURGH DOWNTOWN

945 Penn Avenue, Pittsburgh, PA 15222
412.434.5551

marriott.com

AC HOTEL MARRIOTT PITTSBURGH

1126 Smallman Street, Pittsburgh, PA 15222

412.281.9300

marriott.com

DRURY PLAZA HOTEL PITTSBURGH DOWNTOWN

745 Grant Street, Pittsburgh, PA 15219
412.281.2900

druryhotels.com

OMNI WILLIAM PENN HOTEL

530 William Penn Place, Pittsburgh, PA 15219

412.281.7100

omnihotels.com

DOUBLETREE BY HILTON HOTEL & SUITES PITTSBURGH DOWNTOWN

One Bigelow Square, Pittsburgh, PA 15219

412.281.5800

hilton.com

ETAGE EXECUTIVE LIVING

424 Stanwix Street, Pittsburgh, PA 15222

412.646.8696

stayetage.com

HOLIDAY INN EXPRESS & SUITES PITTSBURGH NORTH SHORE, AN IHG HOTEL

228 Federal Street, Pittsburgh, PA 15212

412.323.0300

ihg.com

THE LANDING HOTEL PITTSBURGH

757 Casino Drive, Pittsburgh, PA 15212

412.231.7777

thelandingpgh.com

Event Rentals

BERINGER'S PARTY & EVENT RENTAL

beringerspartyrentals.com

412.292.3501

info@beringerspartyrentals.com

EVENTIONEERS

eventioneerseventrentals.com

412.325.0030

724.766.6531

info@eventioneers.com

EVENT SOURCE

eventsource.com

412.809.8100

PARTY SAVVY

partysavvy.com

412.856.8368

info@partysavvy.com



Event Production Services

AVIS SPL

avispl.com/about-us/locations/pittsburgh

724.776.3877

avispl-support@avispl.com

FLYSPACE PRODUCTIONS

flyspaceproductions.com

412.208.3020

MEDIA QUEST

mediaquest.biz

412.921.3360

j.tissue@mediaquest.biz

MEETING TOMORROW

meetingtomorrow.com/pittsburgh/audio-visual-rentals

412.957.2051

rfp@meetingtomorrow.com

TECH25

tech25.org

412.212.0246

info@tech25.org

Service Drop-off Instructions



Catering or event orders should be dropped off by the loading dock located to the rear of 912 Fort Duquesne Blvd. If you are using Google Maps, the entry point will be on French Street.



Access to the loading dock is first come, first served.

If the loading dock is occupied, drop-offs can utilize the stairs to the left of the loading dock. Please reach out to your Foundation point of contact if the loading dock is occupied and you have a cart.

A Pittsburgh Foundation staff member should be waiting either inside the loading dock area, or outside on the stairs next to the loading dock. Access to the loading dock is only provided by a Foundation staffer.

Once the items have been dropped off into the building, transportation should be relocated from the loading dock. Limited parking is available in the loading dock area, as long as it does not block other vehicle entry and exit. There is also limited parking in the alleyway behind 912 should any additional services be required.



Once transportation has been relocated, The Pittsburgh Foundation staff member will accompany the vendor to the Foundation's space on the tenth floor. Once setup is completed, staff is welcome to assist them in leaving the building.

If take-down service is required, the same steps should be followed to remove items from The Pittsburgh Foundation space.

Insurance and Waiver



Event Insurance

Host and any outside vendor will maintain during the Event, at its own cost and expense and with financially sound and reputable insurers licensed in the Commonwealth of Pennsylvania, at a minimum, any insurance required by this Agreement.

Host and any outside vendor shall each provide the Foundation with a certificate of insurance that is satisfactory to the Foundation at least fourteen (14) days prior to the Event. Host and any outside vendor must provide the Foundation with proof of commercial general liability insurance or must purchase and keep in full force and effect an event liability, comprehensive liability, and property damage insurance policy for the Date and the Event. The minimum limits of liability shall be not less than \$1,000,000 occurrence/\$2,000,000 aggregate. If Host plans to serve alcohol at the Event, the policy must also include host liquor liability coverage for the Date, with coverage limits of not less than \$1,000,000. If Host plans to use an outside vendor to purchase and/or sell alcohol at the Event, the vendor must provide evidence of liquor liability coverage for the Date, with coverage limits of not less than \$1,000,000. Host and any outside vendor must provide evidence of workers' compensation coverage for any employees attending or working at the event. The policies with the exception of workers' compensation shall name The Pittsburgh Foundation (and all named/additional insureds), 912 Ft. Duquesne Blvd., Floor 10, Pittsburgh, PA 15222, as an additional insured on the policies. All policies, including workers' compensation, to include a waiver of subrogation in favor of Foundation and all additional insureds.

The Host and any outside vendor must also provide insurance for the Event to the Foundation that names Fort Duquesne Blvd. LP, One Bigelow Square, Suite 630, Pittsburgh, PA 15219, as certificate holder and Fort Duquesne Blvd LP and Fort Duquesne Blvd. GP LLC, One Bigelow Square, Suite 630, Pittsburgh, PA 15219, and Elmhurst Development LLC, One Bigelow Square, Suite 630, Pittsburgh, PA 15219, and such other parties as Foundation (or Landlord) may request, as additionally insureds.

The policy or policies of Host and any outside vendor with the exception of workers' compensation shall apply on a primary, non-contributory basis and coverage afforded to the Foundation shall be at least as broad as coverage afforded to the Host as named insured. Host and/or its Attendees, including outside vendors, is responsible for insuring its own personal property against all risks and hazards and maintaining other required insurance (e.g., workers' compensation) as applicable.

Host (on its own behalf and on behalf of all of its agents and representatives and Attendees) hereby waives all rights of recovery against the Foundation on account of loss and damage occasioned to Host (and all of its agents and representatives and Attendees), its property, or the property of Attendees and others under its control, to the extent that such loss or damage is insured against under any insurance policies that may be in force at the time of such loss or damage (or is required to be insured against by Host or Attendees pursuant to this Agreement). Host agrees to waive all subrogation rights against the Foundation (on its own behalf and on behalf of all of its agents, representatives, and Attendees). Host, and any outside vendor, shall provide the Foundation with copies of ISO endorsements CG 24 04 10 93 and CG 20 01 04 13, or their functional equivalents, along with the certificate of insurance as evidence of coverage. If Host does not own an existing policy, policies can be purchased, including, without limitation and as an example only, from Josh Miller, Associate Account Manager, Simpson and McCrady, phone: 412-261-2222.

Insurance and Waiver



Ongoing On-Site Service Providers

If a service provider should provide continual service on-site besides drop-off/pickup, the following needs to be provided to the point person at the Pittsburgh Foundation no less than three business days prior to the event:

- A Certificate of Insurance naming The Pittsburgh Foundation (and all named/additional insureds), 912 Ft. Duquesne Blvd., Floor 10, Pittsburgh, PA 15222, as an additional insured on the policy.
- The Host must also provide insurance for the Event to the Foundation that names Fort Duquesne Blvd LP, One Bigelow Square, Suite 630, Pittsburgh, PA 15219, as certificate holder and both Fort Duquesne Blvd LP, One Bigelow Square, Suite 630, Pittsburgh, PA 15219, and Elmhurst Development LLC, One Bigelow Square, Suite 630, Pittsburgh, PA 15219, as additionally insured.
- A complete list of all people who will be working on premises for 912 security.

This requirement can cover any vendor, not limited to but including caterers, photographers, videographers and event organizers. Failure to provide this information may mean that services are unable to be provided to The Pittsburgh Foundation.