

WISH BOOK 2025





Nisha Blackwell serves as the residency program director of Radiant Hall, p. 14. A business owner and entrepreneur, she is also the founder and CEO of Knotzland Bowties. Photo by Maranie Staab.

At The Pittsburgh Foundation and The Community Foundation of Westmoreland County (CFWC), our commitment to place-based philanthropy is rooted in a simple yet profound question: How can we harness our collective resources — those of our donors, our community and our organizations — to build a region where opportunity is not an aspiration but a reality for all? With over a century of combined experience, we know the journey from surviving to thriving takes many paths, and we continually reimagine how we can best support our community along the way.

One answer has stood the test of time: investing in the nonprofits that are our region's lifeblood. Deeply embedded in the fabric of our communities, these organizations understand the challenges our neighbors face and the solutions needed to overcome them. Their dedication inspires us every day, and it is through their work — and your generosity — that we can create a Pittsburgh region where everyone, regardless of race, identity or circumstance, has the opportunity to reach their full potential.

This year's Wish Book celebrates 100 nonprofits — including 30 from Westmoreland County, to celebrate CFWC's 30th anniversary — that are driving change in areas critical to our region's success: arts and culture,

basic needs, economic mobility, environmental action, equity and social justice, and more. To further celebrate this anniversary year and the impact of nonprofits in Westmoreland, grants to organizations based in the county will receive matching funds up to \$2,000.

As we look to the future, we remain steadfast in our commitment to listening to those most affected by inequity and asking, "How can we help you and your community thrive?" Together with you, our donors, and the incredible organizations featured in this book, we are building a vibrant and just region where everyone has the chance to flourish.

MAKING GRANTS IS EASY

To contribute a grant of any size, contact your donor services representative to complete your transaction via email. Your grant can also make a special and meaningful holiday, anniversary or birthday gift.

From all of us at The Pittsburgh Foundation and The Community Foundation of Westmoreland County, thank you for helping our community thrive.

For a digital version of the Wish Book, visit [**www.pittsburghfoundation.org/wishbook**](http://www.pittsburghfoundation.org/wishbook).

TABLE OF CONTENTS

Arts and Culture 7

Basic Needs 19

Economic Mobility 43

Environmental Action 51

Equity and Social Justice 59

Other Regional Needs 67



This organization is one of 30 in this year's Wish Book based in Westmoreland County. The inclusion of these 30 organizations offers a celebratory nod to the Community Foundation of Westmoreland County's (CFWC) 30th anniversary. This year, wishes to these Westmoreland-based organizations will receive up to \$2,000 in matching funds from CFWC.



A volunteer for Upstream Pittsburgh clears debris from a Pittsburgh waterway, p. 57. Photo by Nate Smallwood.



A young art enthusiast creates a masterpiece at Sweetwater Art Center, p. 14. Photo by Nate Smallwood.

ARTS AND CULTURE

Adams Memorial Library	8
Assemble	8
Contemporary Craft	9
Filipino American Association of Pittsburgh	9
Fort Ligonier Association	10
Latrobe Art Center	10
Ligonier Valley Historical Society	11
New Sun Rising for RUFF Writers	11
New Sun Rising for Sharing Our Story	12
Pittsburgh Center for Creative Reuse	12
Pittsburgh School for the Choral Arts for Pittsburgh Girls Choir	13
Preservation Pittsburgh	13
Radiant Hall Studios	14
Sweetwater Art Center	14
The Legacy Arts Project Inc.	15
Westmoreland Performing Arts	15
Westmoreland Symphony Orchestra	16
Write Pittsburgh	16
You Are Here	17

Adams Memorial Library



Adams Memorial Library provides educational and entertainment materials, programming, free internet and other community services through the main library, one branch and numerous online resources. During the pandemic, the public library searched for online, virtual programming to fill the void. It found the Library Speaker Consortium, which pools resources from libraries nationwide to give them the chance to host famous and up-and-coming authors that none could afford on their own. The authors appear live, and viewers can ask them questions directly. In addition, library patrons can view the entire back catalog of recorded versions. Over the past three years, library patrons have logged 24,300 views, an average of 22 times per day, every day. The consortium's three-year contract is in the final months of its final year, and renewal costs \$7,500. This service has proved popular long after the pandemic, and the library is requesting funds to continue it.

PRIMARY COUNTY SERVED Westmoreland

POPULATION SERVED ANNUALLY Adams Memorial Library's service area has a population of 49,000, with 6,889 registered cardholders. In 2024, its people-counters hit 77,848.

WISH REQUESTED \$5,000

Assemble



Assemble builds confidence through making by connecting learners, makers, technologists and artists to nurture agency. Assemble's dedicated school-year and summer programs use learning as a tool to create a more equitable future for participants. Assemble provides a space for learners to engage with Science, Technology, Engineering, Art and Mathematics (STEAM)-based activities in a fun, relaxed and safe environment. These creative workshops help positively empower learners to design the kinds of futures they want to see. Support is for Assemble's public programming, including Afterschool, Girls Maker Night, Learning Parties, Youth Maker Night, Saturday Crafternoons, Day Camps, Summer Camps, Hack the Future and the Ramp Up Fellowship. Funding will enable Assemble to offer scholarships and free programs for neighbors, professional development for educators, new materials and technology for upcoming projects and much more.

PRIMARY COUNTY SERVED Allegheny

POPULATION SERVED ANNUALLY Each year, Assemble serves an average of 10,000 people, including approximately 2,000 students in grades K-12.

WISH REQUESTED \$5,000

Contemporary Craft



For over 50 years, Contemporary Craft has engaged the public in creative experiences with craft media to produce contemporary art. Its programs include exhibitions, classes, community programming and a retail store. In response to the growing interest in craft media, Contemporary Craft recently expanded its campus with the new Timmons Studios — growing its metals and fibers studios, reintroducing a wood studio and adding a paper and book arts studio, dye lab and blacksmithing studio. This expansion supports the 1,800-plus students who participate in workshops annually, family-friendly Community Day celebrations, regional and national Artists-in-Residence opportunities, school group visits and other community engagement programs. Donations will support Contemporary Craft's educational and artist-focused programming, as well as funding studio tools and maintenance. Support ensures that admission to Contemporary Craft's galleries will remain, as always, free of charge.

PRIMARY COUNTY SERVED Allegheny

POPULATION SERVED ANNUALLY Contemporary Craft serves 15,635 visitors annually, including students, communities and schools, representing all ages and demographics.

WISH REQUESTED \$5,000

Filipino American Association of Pittsburgh



Filipino American Association of Pittsburgh preserves, promotes and perpetuates Filipino heritage among its members and the general public of Western Pennsylvania through cultural, charitable and educational activities. The Cultural Dance Troupe showcases traditional Filipino folk dances at multicultural events each May and throughout the year, representing the Filipino community at regional festivals, schools and community programs. Funding will enable the association to meet increased demand for performances through the purchase and maintenance of traditional costumes, props and equipment. Funding will further allow the association to maintain its Philippine Center in West Mifflin — the home of its Dance Troupe. By making resources available to members and increasing the visibility of Filipino heritage, the association can ensure that Filipino traditions remain a vibrant part of the region's cultural landscape.

PRIMARY COUNTY SERVED Allegheny

POPULATION SERVED ANNUALLY Each year, 200-250 members are served, including youth and adult dancers, with thousands of community members and diverse audiences enjoying performances and education.

WISH REQUESTED \$5,000

Fort Ligonier Association



Fort Ligonier Association inspires all to engage in Fort Ligonier's stories and how the Fort set the stage for the founding of the country and changed world history. Education is at the core of its mission. For the past several years, local school districts have struggled to secure funding for field trips for grade K-12 students. This is partially due to the prohibitively high cost of transportation. Funding would allow these students to visit Fort Ligonier for an out-of-classroom experience learning about the fort's role in local, regional and national history. The programming adds to their overall learning experience by bringing history to life through the reconstructed 18th-century buildings and fort, museum exhibits and access to a collection of over 100,000 artifacts. Funds will help the association reach even more students for this unique educational experience.

PRIMARY COUNTY SERVED Westmoreland

POPULATION SERVED ANNUALLY Fort Ligonier Association serves 23,400 people each year.

WISH REQUESTED \$5,000

Latrobe Art Center



Latrobe Art Center creates a safe and welcoming environment that encourages and fosters the creativity and artistic development of every individual. Its classes, workshops, exhibitions and partnerships with local schools spark self-expression, skill-building and connection, welcoming both artists and art lovers. The center also annually brings the community together through two beloved free events — Mister Rogers Family Days and Holly Jolly Christmas in Latrobe — where families make memories and celebrate local culture. With growing participation and membership, the demand for expanded arts programs as well as gallery and classroom space continues to rise. Operational funding will help the center meet these needs, sustain and enhance its offerings, and ensure the arts remain accessible, inspiring and vibrant for everyone in the community.

PRIMARY COUNTY SERVED Westmoreland

POPULATION SERVED ANNUALLY Latrobe Art Center's classes, exhibitions, group tours and community events provide services to approximately 20,000 people annually.

WISH REQUESTED \$5,000

Ligonier Valley Historical Society



Ligonier Valley Historical Society preserves the heritage and history of the Ligonier Valley for present and future generations. It makes the region's history accessible, engaging and relevant to people of all ages and abilities. At Compass Inn Museum's three Living History Weekends throughout the summer months, trained interpreters in authentic period clothing bring the early 1800s to life for travelers and townsfolk at stagecoach stops. Guests experience traditional trades such as blacksmithing and beehive oven and open-hearth cookery, as well as other daily tasks that shaped the country. These immersive experiences spark curiosity, deepen understanding and create lasting connections to the past. Interpreters ensure historical accuracy and strong educational value, yet their services require investment. The cost of engaging trained interpreters is increasing. Requested funding will help cover these fees, enabling the society to keep admission affordable or free so that families, students and underserved audiences can participate.

PRIMARY COUNTY SERVED Westmoreland

POPULATION SERVED ANNUALLY Ligonier Valley Historical Society serves 8,500 individuals through museum tours, educational programs, living history and special fundraising events.

WISH REQUESTED \$5,000

New Sun Rising for RUFF Writers



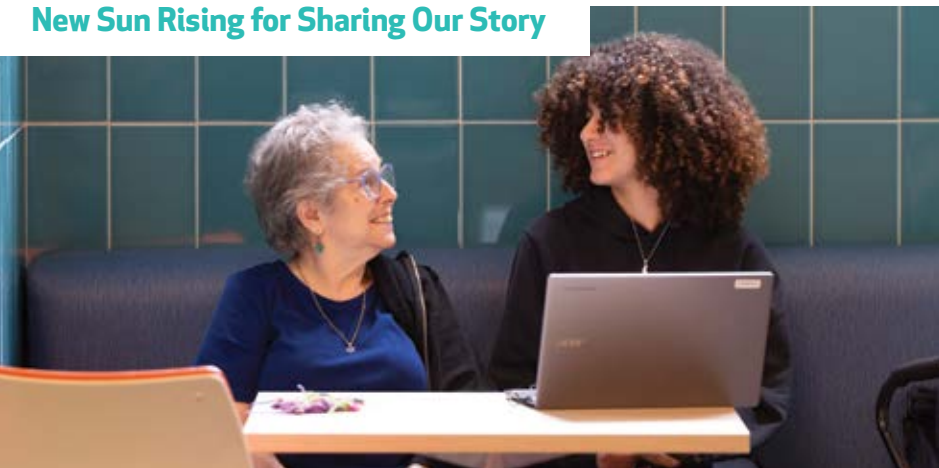
RUFF Writer Books serves older adults and children through Memory Café activities, including reading, crafting, writing and singing, in libraries, schools, after-school programs and personal care homes. RUFF Writer's "Relationships Using Facts and Fiction" approach connects children and elders through activities centered around beloved children's picture books, songs, crafting and nature-themed writing templates to share positive life stories, creating a book one page at a time. Life can be wild or rough, but multigenerational moments of joy spent reading and listening, while creating art and writing positive life stories, can transform rough times into "RUFF" times. Funds will be used as sponsorships in underserved neighborhood libraries, with the potential to serve more than 20 libraries and hundreds of families. Programming includes a copy of the RUFF Writers Book KIT and access to "RUFF Writer Books: Revisions," a traveling exhibit of books by Western Pennsylvania authors and illustrators.

PRIMARY COUNTY SERVED Allegheny

POPULATION SERVED ANNUALLY More than 50 families per site are served monthly through multigenerational Memory Café literacy activities.

WISH REQUESTED \$5,000

New Sun Rising for Sharing Our Story



Sharing Our Story uses digital storytelling to bridge divides, fostering equity, education and understanding by amplifying underrepresented voices and connecting communities through shared experiences. Exploring Identity: Teen Voices empowers refugee, immigrant, African American and Jewish teens in Pittsburgh to share their stories of personal growth through powerful short films that reflect their identities, challenges and resilience. It's not just about storytelling — it's about connection, healing and justice to challenge harmful narratives, raise awareness of injustice and bring people together around shared values in a bold, human and joyful way. The digital stories will be shared in free, public events that facilitate community discussions, inviting neighbors of all backgrounds to listen, learn and connect. By creating space for youth voices and fostering dialogue across lines of difference, this project builds empathy, understanding and solidarity. Funding will support community events, with a goal of reaching 400 attendees.

PRIMARY COUNTY SERVED Allegheny

POPULATION SERVED ANNUALLY Sharing Our Story serves 10 storytellers and 400 program attendees. Additional online viewers of the digital stories are expected.

WISH REQUESTED \$5,000

Pittsburgh Center for Creative Reuse



Pittsburgh Center for Creative Reuse inspires creativity, conservation and community engagement through reuse, boosting self-confidence and skills in learners while fostering a healthy community. The organization operates a nontraditional and regionally unique reuse center where community members donate and shop for used art and craft supplies. The center also facilitates hands-on creative programming for the public. In 2024, Pittsburgh Center for Creative Reuse accepted over 50 tons of materials, welcomed more than 27,000 to its center and facilitated educational programming for nearly 4,000. Funds will build on the successful pilot year of the guest artist workshop series, paying local artists to lead free workshops for the community, sparking creativity and highlighting reuse for creative expression. The center aims to expand its outreach to underrepresented communities, ensuring that everyone has access to these inspiring artists.

PRIMARY COUNTY SERVED Allegheny

POPULATION SERVED ANNUALLY Over 32,000 individuals are served per year through educational programs, material donations, the gallery, the thrift shop and special events.

WISH REQUESTED \$5,000

Pittsburgh School for the Choral Arts for Pittsburgh Girls Choir



The Pittsburgh Girls Choir is a choral organization focused on music education and community. Welcoming all girls regardless of their socioeconomic backgrounds, the Pittsburgh Girls Choir shares the transcendent beauty of girls' voices and strives to transform the lives of choristers by creating communities of compassion, excellence and mutual respect. Singers gain artistic excellence and life skills, including collaboration, leadership, confidence and friendship across diverse backgrounds. Funding will be used for a professional part-time accompanist to support the organization's five choirs. A consistent, highly skilled accompanist is essential to the choir's rehearsals and performances, working closely with directors to maintain the high artistic standards that define the Pittsburgh Girls Choir. This role demands exceptional piano ability and strong teaching skills, making competitive compensation vital. Fulfilling this need ensures the choir can enrich the lives of young singers, their families and the shared community.

PRIMARY COUNTY SERVED Allegheny

POPULATION SERVED ANNUALLY The Pittsburgh Girls Choir serves 75 girls, ages K-12, throughout the Pittsburgh region (open to all regardless of ability to pay) and 6,765 audience members annually.

WISH REQUESTED \$5,000

Preservation Pittsburgh



Preservation Pittsburgh collaborates with community partners to provide education, research and advocacy to preserve the Pittsburgh region's historic, architectural, cultural and environmental heritage. Since 1991, the organization has significantly increased the number of designated historic landmarks, which makes future renovations more likely, prevents the vacancy or closure of historic sites and sometimes unlocks grant funding. Preservation Pittsburgh helped keep the South Side's Oliver Bath House open; assisted Brown Chapel AME with funding; established a historic marker honoring photographer Charles "Teenie" Harris; and restored the Obama Academy's Peabody Memorial. Realized landmarking includes Sal's Barber Shop, Frick Park, Beth Abraham Cemetery, steel/labor history, Rodef Shalom and Shrine of the Blessed Mother. Requests for Preservation Pittsburgh assistance are frequent. Funding will hire historians to fulfill these requests and continue to provide services free of charge.

PRIMARY COUNTY SERVED Allegheny

POPULATION SERVED ANNUALLY Preservation Pittsburgh serves more than 1,000 individuals and has meaningful outreach with at least 20 organizations each year.

WISH REQUESTED \$5,000

Radiant Hall Studios



Radiant Hall empowers artists to sustain thriving studio practices by creating and preserving access to space, shared resources, programs and a supportive community of peers. Providing affordable studios that help historically underserved artists create, connect and grow since 2020, Radiant Hall has supported over 30 artists through fully subsidized studio residencies. Artists who are parenting and/or caregiving often need extra support, as they frequently face unique barriers to maintaining a studio practice. Funding would be dedicated to two residency opportunities specifically for this artist group. Each resident would receive six months of free studio space, along with a stipend and career development support, child care and materials, allowing these artists to focus on their creative work while caring for their families. This initiative strengthens the Pittsburgh artist community and advances Radiant Hall's mission to remove barriers and make the arts more inclusive for people of all backgrounds and life circumstances.

PRIMARY COUNTY SERVED Allegheny

POPULATION SERVED ANNUALLY The program serves 130 studio artists, prioritizing those who have been historically underserved in the arts, with a total of 6,300 program participants since 2000.

WISH REQUESTED \$5,000

Sweetwater Art Center



The Sweetwater Art Center's mission is to enrich the communities it serves by providing art education and cultural programming, fostering local and regional artist talent, and making art accessible to a diverse audience, including by removing longstanding barriers to access — such as transportation, affordability and geographic isolation. Sweetwater's SweetRide Mobile Art Unit helps meet rising demand for accessible, community-based arts programming across underserved areas of Allegheny and Beaver Counties. SweetRide reaches students in Title I schools, English language learners and seniors who lack access to arts engagement. Support will be used for staffing teaching artists and outreach coordinators, purchasing materials and equipment (including art supplies, technology and mobile fixtures), and providing transportation and scholarships to ensure economic inclusion. Support ensures this mobile classroom becomes a catalyst for learning, connection and empowerment throughout the region.

PRIMARY COUNTY SERVED Allegheny

POPULATION SERVED ANNUALLY Sweetwater serves an estimated 3,000-5,000 individuals annually through classes, exhibits, events and mobile outreach via the SweetRide Mobile Art Unit.

WISH REQUESTED \$5,000

The Legacy Arts Project Inc.



The Legacy Arts Project's mission is to preserve, promote and create Africana arts that honor the history, heritage and contributions of the African diaspora through education, community engagement and cultural programming. The Legacy Arts Project's mission is to uplift holistic wellness within the Black community and ensure the facility serves as a hub for cultural and physical nourishment. As part of this mission, the Legacy Arts Project offers intergenerational wellness programs that connect nutrition, culture and community health — helping participants gain practical life skills and a deeper understanding of food as a tool for healing and empowerment. Funds will support wellness programming by expanding the capacity for nutrition education and food preparation in the organization's newly equipped commercial kitchen. The funds will be used to purchase supplies such as cookware, utensils, storage containers and ingredients for hands-on workshops that teach healthy cooking, culturally relevant recipes and food justice principles.

PRIMARY COUNTY SERVED Allegheny

POPULATION SERVED ANNUALLY The Legacy Arts Project generally serves approximately 350 youth and 200 adults annually.

WISH REQUESTED \$5,000

Westmoreland Performing Arts



Westmoreland Performing Arts gives students the skills to become creative thinkers and collaborators. It mentors, supports, protects and encourages a respectful professional community and promotes physical and emotional well-being through classes and performances. The organization provides high-quality professional performing arts training for children aged 4-18 and individuals on the autism spectrum and with special needs. Classes focus on social-emotional learning strategies and building self-esteem, as well as equipping students with skills applicable to fields of study besides theater. Many of the families who take part in the programs are unable to pay. Westmoreland Performing Arts raises money for scholarships and financial aid but is unable to meet this demand and still provide all its services. Westmoreland Performing Arts will never turn away a student or a request to use its art for good. Operating support will help meet the increased and evolving needs in the community.

PRIMARY COUNTY SERVED Westmoreland

POPULATION SERVED ANNUALLY Westmoreland Performing Arts had 263 students in 2024 and expects to exceed that number in 2025. In 2024, performances attracted over 10,000 audience members.

WISH REQUESTED \$5,000

Westmoreland Symphony Orchestra



The Westmoreland Symphony Orchestra promotes musical enrichment through quality performances and education to a broad-based audience in the Westmoreland region. Requested funding would support its general operating costs, which are essential to sustaining its mission of bringing outstanding symphonic music to the Westmoreland region. The nonprofit organization relies heavily on the generosity of donors and grantmakers to maintain the high quality of its performances, support its dedicated musicians and staff, and continue offering enriching musical experiences to the community. Operating support will help cover vital expenses such as concert production, administrative functions and community outreach efforts, ensuring the Westmoreland Symphony Orchestra can remain a vibrant cultural asset for audiences of all ages.

PRIMARY COUNTY SERVED Westmoreland

POPULATION SERVED ANNUALLY Westmoreland Symphony Orchestra typically performs for approximately 10,000 patrons a year through various concerts throughout the region.

WISH REQUESTED \$5,000

Write Pittsburgh



Write Pittsburgh is a program collective that amplifies voices, empowers writers and fosters relationships that build community. Through workshops, events and publishing, Write Pittsburgh serves teens, adults, incarcerated and justice-involved people, LGBTQIA+ communities, Black, Brown and Indigenous writers, and anyone who wants to use writing for connection, growth and liberation. Funding will be applied to youth programs, covering costs such as facilitators, supplies and materials, and technology, to allow these workshops to be offered free. With this support, ongoing workshops can continue to serve teens aged 13-18, while also reviving in-person workshops to complement existing virtual offerings. Additionally, costs associated with the Write Pittsburgh online youth publication will be covered. Write Pittsburgh plans to collaborate with community-based organizations that serve youth through after-school programs, foster care and more.

PRIMARY COUNTY SERVED Allegheny

POPULATION SERVED ANNUALLY Write Pittsburgh serves 450-700 people annually through its workshops, publications and events.

WISH REQUESTED \$5,000

You Are Here



You Are Here delivers opportunities that help artists and community members engage in creative projects that build individual and community pride and self-confidence. Jeannette is an economically distressed former factory town striving to rebuild its image by engaging citizens in revitalization efforts that include an arts presence. Now in its eighth year, You Are Here is the only active arts entity in the city that offers diverse and locally focused art opportunities. It provides classes, exhibition space and opportunities to participate in innovative community projects. Of its five major annual exhibitions, at least one is focused on Jeannette history or culture. The organization also offers affordable creative materials through an art thrift shop and engages individuals living with disabilities through art classes for wellness and skill-building. Operating funds would help expand the programs that fulfill You Are Here's mission regarding community projects and services, including art in public places.

PRIMARY COUNTY SERVED Westmoreland

POPULATION SERVED ANNUALLY You Are Here serves 850 gallery visitors and artists, 400 thrift shop visitors, 90 students and eight teaching artists, plus the public at city events.

WISH REQUESTED **\$5,000**



Volunteers for Delmont Meals on Wheels deliver food to those in need, p. 24. Photo by Nate Smallwood.

BASIC NEEDS

Allegheny Mountain Rescue Group 20
Anchorpoint Counseling Ministry 20
Ayúdate 21
Bhutanese Community Association of Pittsburgh 21
Casino Theater Restoration and Management Inc. 22
Christian Layman Corps 22
Clear Thoughts Foundation 23
Computer Reach 23
Delmont Meals on Wheels 24
Dragon's Den 24
Eden's Farm 25
Faith & Gratitude 25
Faith in Action Laurel Area 26
Family Hospice and Palliative Care 26
Food Assistance Match 27
Foster Love Project 27
Free-Op Community Store 28
Growing Up Greene 28
Heroes Never Alone 29
Hilltop Urban Farm 29
Hope Ministries of McKeesport Inc. 30

MA's Pantry 30
MAYA Organization 31
Murrysville Meals on Wheels 31
National Ovarian Cancer Coalition — Pittsburgh Market 32
New Castle Public Library 32
North Hills Affordable Housing DBA HEARTH 33
Peoples Library 33
Proud Haven 34
Reagan's Journey 34
Rostraver Public Library 35
Southwestern PA Human Services for Raven's Hands 35
STEM Coding Lab 36
The Blessing Board 36
The Pittsburgh New Church School 37
The Promise Center of Homewood 37
This Generation Connect 38
West Overton Village and Museums 38
West Ridge Christian Community Church 39
Western Pennsylvania Diaper Bank 39
Westmoreland Children First 40
Will Allen Foundation 40
Young Adult Survivors United 41

Allegheny Mountain Rescue Group



Providing technical and specialized search and rescue services for lost and missing persons in Pittsburgh and surrounding areas, as well as supporting public safety agencies, Allegheny Mountain Rescue Group is a 100% volunteer organization funded entirely by member dues and private donations. The group receives no guaranteed government funding yet serves as a critical lifeline for the greater Allegheny Mountain region, responding to increasing calls for service from the community each year. Specialized equipment is necessary to meet the complex challenges of modern search and rescue missions. With funds raised in 2024 to purchase a basic truck and boat, funds are needed for upgrades, emergency lights and storage. A properly equipped rescue boat will enable the group to deploy trained K9s safely and effectively, expanding capabilities for some of the most challenging search scenarios. Funds would alleviate the financial burden on volunteer members, allowing them to focus on training and operational readiness.

PRIMARY COUNTY SERVED Allegheny

POPULATION SERVED ANNUALLY Allegheny Mountain Rescue Group responds to dozens of incidents in Allegheny County each year, from a range of agencies requesting assistance.

WISH REQUESTED **\$5,000**

Anchorpoint Counseling Ministry



Founded in faith, Anchorpoint Counseling Ministry strengthens individuals and families through personalized mental wellness and educational services accessible to all. Its family counseling center provides mental health care to neighbors of all ages, faiths and backgrounds. Anchorpoint removes barriers to treatment for the uninsured or under-resourced. Funding will support Anchorpoint's "Healing Without Hurdles" initiative, a collection of targeted programs designed to remove financial and access-related obstacles to mental health care. These programs include Ray of Hope (low-fee counseling for under-resourced youth and parents); Serving Our Seniors (low-fee counseling for older adults on fixed incomes); Community Counseling Clinics (affordable and conveniently located mental health care in underserved neighborhoods); and No-Fee Support Groups (for senior adults, neighbors grieving the loss of a spouse, and single moms and their children).

PRIMARY COUNTY SERVED Allegheny

POPULATION SERVED ANNUALLY Anchorpoint provides services to 750 vulnerable youth, seniors, parents and community members each year. More than one-third of clients rely on charitable care.

WISH REQUESTED **\$5,000**

Ayúdate



Ayúdate's mission is to increase accessibility of mental health resources in Spanish via telehealth to the underserved Hispanic population. Family separations are increasing due to current trends in immigration enforcement, leaving children in single-parent households and families uncertain where to turn. Ayúdate creates a virtual community of bilingual and culturally competent therapists willing to offer support to this population. Funding would allow Ayúdate to provide members with access to an online library of mental health resources offered in Spanish and then pair them with qualified therapists who will work to meet their individual needs. Therapists working with Ayúdate agree to reduce their rates by as much as half, and Ayúdate provides access to these therapists on a sliding-fee scale, based on ability to pay. These connections to a support system relieve suffering and offer hope for families in need of mental health resources.

PRIMARY COUNTY SERVED Allegheny

POPULATION SERVED ANNUALLY Ayúdate serves the uninsured or underinsured Spanish-speaking population in Pennsylvania.

WISH REQUESTED **\$5,000**

Bhutanese Community Association of Pittsburgh



The Bhutanese Community Association of Pittsburgh is committed to ensuring a high quality of life for all members of the Bhutanese community in Allegheny County and supporting their integration into American society. The association's after-school program serves Bhutanese and other refugee youth in four Pittsburgh-area communities. With small class sizes (1:6 staff-to-student ratio), caring mentors — many of whom are Bhutanese college students — and hands-on learning in STEAM, art and leadership, students build confidence, make friends and discover new possibilities. Students explore robotics, music and 3-D building, sparking curiosity and creativity. Over 90% of participants say the program helps them feel more valued, confident and connected to peers and teachers — important for families who are mostly new to the U.S. school system. Funding helps retain skilled staff, welcome more students and cover gaps left by shrinking government funds.

PRIMARY COUNTY SERVED Allegheny

POPULATION SERVED ANNUALLY Bhutanese Community Association of Pittsburgh directly serves more than 3,000 individuals annually and more than 8,000 indirectly.

WISH REQUESTED **\$5,000**

Casino Theater Restoration and Management Inc.



Casino Theater Restoration and Management maintains and restores the historic Casino Theater while continuing to promote the arts in the community. The theater shares a building with the Vandergrift Public Library, and both organizations use an area on the second floor for meetings, presentations and classes. As is often the case with older historical buildings, there are a lot of steps between floors. This area has fallen into disrepair, and the bathroom is unusable. This means parents with small children, and seniors and others with mobility issues, must traverse the steps to use the restroom facilities. Often, this means families with small children and people with disabilities don't attend meetings at the building due to the steps. Funding would go toward installing a working bathroom in this shared space. This would help the organizations serve more low-income families by providing a safe and clean area to learn and relax.

PRIMARY COUNTY SERVED Westmoreland

POPULATION SERVED ANNUALLY The theater and the library serve over 3,500 people of all ages and races.

WISH REQUESTED **\$5,000**

Christian Layman Corps



The Christian Layman Corps serves southwestern Pennsylvania by providing families in need with food, clothing, household items and furniture through its outreach programs. Its thrift store covers its operating costs and those of Christian Layman outreach programs. However, the store is only open three days a week, and Christian Layman is open just twice a month for food distribution. These limited hours take a toll on finances. With 40 volunteers and five paid staff, Christian Layman continues to serve the local community. Its programs include a voucher system, food pantry, emergency food program, "A Bed for Every Child" program, emergency bed programs and the Larry R. Garlock Veterans Program. These programs provide food, clothing, household items and furniture to those in need. Requested funding would help Christian Layman continue its services to the community, especially children and veterans.

PRIMARY COUNTY SERVED Westmoreland

POPULATION SERVED ANNUALLY The Christian Layman Corps serves an estimated 9,844 families in need yearly through all of its outreach programs.

WISH REQUESTED **\$5,000**

Clear Thoughts Foundation



More than 400,000 people in Pennsylvania live with some form of dementia. Clear Thoughts Foundation's mission is to fund the discovery of breakthrough drugs and novel treatments to eliminate dementia. The disease, which affects millions globally, is increasing in prevalence and affecting many people at a much younger age. Clear Thoughts Foundation is fighting to end the more than 100 forms of dementia through the research and discovery of breakthrough drugs and novel treatments. Its research initiative, the CTF Consortium, is a cooperative of top local researchers and doctors working together to make groundbreaking discoveries and bring preventive treatments from the lab to the bedside. Collaboration accelerates research advancements and more than doubles the impact of funding, which replenishes laboratory supplies and invests in equipment and technology upgrades. CTF Consortium studies often serve as the baseline data needed for researchers to apply for multi-million-dollar national grants.

PRIMARY COUNTY SERVED Allegheny

POPULATION SERVED ANNUALLY Clear Thoughts Foundation serves 3,500 individuals and their families in the Pennsylvania region, with potential for a wider, research-based impact over time.

WISH REQUESTED **\$5,000**

Computer Reach



Computer Reach is a Pittsburgh-based nonprofit organization that makes technology available to people most in need through refurbished equipment, computer skills training and support. Its work transforms communities by providing refurbished computers to homes, schools, libraries and workplaces. The organization's in-person and remote support empowers individuals to meet their unique technology needs. Affordable computer devices and skills are essential for daily life. Computer Reach employs Computer Bench Techs and Digital Navigators to serve thousands in the Pittsburgh community on a carefully managed budget fully supported by foundations and federal and state funds. Because the core program funds from the Digital Equity Act have been cut, the organization has suffered a reduction in staff from 30 to eight. Funding will help retain talent and maintain important digital literacy operations.

PRIMARY COUNTY SERVED Allegheny

POPULATION SERVED ANNUALLY Computer Reach serves 1,500-2,000 people per year, focusing on underserved communities in Pittsburgh.

WISH REQUESTED **\$5,000**

Delmont Meals on Wheels



Delmont Meals on Wheels delivers nutritious meals that improve the health, quality of life and independence of older adults, people with disabilities and other homebound residents. The organization often hears from the children of parents who want to remain independent but need local support that they are getting the food they need from the program to continue living at home. Meals on Wheels' costs have increased, but the organization is seeking to avoid raising its \$3-per-day fee, while continuing to be able to serve the increasing numbers of people in need. Funding will help purchase necessary food, supplies and equipment to continue its work. Meals on Wheels also provides a winter weather kit each year so recipients have food in their pantry if the weather prevents delivery.

PRIMARY COUNTY SERVED Westmoreland

POPULATION SERVED ANNUALLY Delmont Meals on Wheels serves 10,920 people per year, delivering approximately 70 meals per day, three days a week, year-round.

WISH REQUESTED **\$5,000**

Dragon's Den



Dragon's Den is a youth development center in Homestead that provides transformative learning environments to children aged 6-13 through the use of a state-of-the-art therapeutic and educational challenge course and free after-school and summer camp programs. Focusing activities on five pillars of health — Physical, Nutritional, Academic, STEAM and Mental Health — and guided by its “Challenge by Choice” philosophy, Dragon's Den uses a transformational ropes course as a flexible metaphor for life: Every obstacle is a chance to learn lessons that carry into school, home and beyond, helping kids build courage and resilience. Dragon's Den will use funds to hire additional staff and provide expert-led training focused on neurodivergent children, including sensory integration, communication strategies and trauma-informed care. For many neurodivergent kids, traditional settings can be overwhelming — but at Dragon's Den, they discover a space where they can shine.

PRIMARY COUNTY SERVED Allegheny

POPULATION SERVED ANNUALLY Dragon's Den serves 400 children annually in the Homestead and surrounding communities.

WISH REQUESTED **\$5,000**

Eden's Farm



Eden's Farm provides trauma-informed care, safe housing and economic empowerment to survivors of human trafficking while advancing education, outreach and community partnership. The organization empowers individuals to exit the commercial sex industry. It offers care to those who have been trafficked by building relationships and providing them with resources and opportunities to thrive. Eden's Farm's survivor-led programming includes trauma-informed case management, access to mental health care and healing-centered employment through its Justice Enterprise Retail Store and national Survivor Apprenticeship Program. At Eden's Farm, survivors are not just supported, they are employed and equipped to rebuild their lives and discover their strength as leaders, educators and creators. Funds will help provide real pathways to sustainable freedom, where survivors can earn income, access therapy, develop job and life skills and engage in meaningful, purpose-driven work.

PRIMARY COUNTY SERVED Allegheny

POPULATION SERVED ANNUALLY Eden's Farm serves 30-40 survivors annually and trains 1,000-plus people, all grounded in the premise that access to knowledge can be life-saving.

WISH REQUESTED \$5,000

Faith & Gratitude



The mission of Faith & Gratitude is to provide free resources to cancer patients to strengthen their mind, body and spirit through treatment and beyond. According to the American Cancer Society, in 2025, over 2 million people in the U.S. will be diagnosed with cancer (excluding non-melanoma), which will claim 1,700 lives each day. Cancer does not discriminate — it impacts the young and old; it strikes across every religion and every race. Faith & Gratitude serves all patients regardless of age, race or gender. Anyone going through a diagnosis or helping someone with cancer is welcome to participate in programs, including the Cancer Resource Guide, wellness seminars, free wig giveaways, one-on-one meetings, a bi-monthly support group, website education and speaker series. This grant will help Faith & Gratitude support the patient's mind, body and spirit, and help alleviate the financial toll cancer takes on patients and their families.

PRIMARY COUNTY SERVED Westmoreland

POPULATION SERVED ANNUALLY Through distribution of its Cancer Resource Guides and its in-person and online events, Faith & Gratitude serves more than 1,000 individuals annually.

WISH REQUESTED \$5,000

Faith in Action Laurel Area



Faith in Action Laurel Area is dedicated to providing support that empowers local seniors to live confidently, age well and stay connected to the heart of their community. The organization's mission is based on a belief in the power of human connection, measured in smiles and moments when seniors feel valued. Loneliness, isolation and depression are increasing among seniors. In Westmoreland County, nearly 59% of older adults are at significant risk of social isolation (Pittsburgh Post-Gazette). Funding allows Faith in Action to reintroduce its Friendly Visitor Program, a vital service that declined significantly during the pandemic but continues to be among the most requested offerings. The program pairs trained volunteers with seniors for weekly visits, offering meaningful companionship, conversation and emotional support. Updated outreach materials, a public awareness campaign and comprehensive training for new and existing volunteers will ensure the unique social and emotional needs of aging neighbors are met.

PRIMARY COUNTY SERVED Westmoreland

POPULATION SERVED ANNUALLY Throughout Westmoreland County, 375 seniors and surrounding community are served by Faith in Action Laurel Area.

WISH REQUESTED **\$5,000**

Family Hospice and Palliative Care



Since 1980, Family Hospice and Palliative Care has provided compassionate comfort care for patients with life-limiting illness and their families, wherever they call home. Forty percent of the organization's admissions (1,240) present with a neurocognitive diagnosis, with the most common diagnosis being Alzheimer's disease. Research has shown benefits for those with Alzheimer's who use fidget blankets (lap-sized blankets providing visual, auditory, olfactory and tactile stimulation) and animated dolls/pets. These tools lessen agitation, anxiety and irritability, symptoms that are associated with poor outcomes such as long-term pain and discomfort, patient and caregiver distress, and increased health care costs. They improve sleep, relaxation and appetite, boost interpersonal interaction and communication, and create structure, a sense of purpose and joy, and opportunities for caring, nurturing and social interaction. Funds would be applied to the purchase of robotic dolls/pets and fidget/sensory blankets.

PRIMARY COUNTY SERVED Allegheny

POPULATION SERVED ANNUALLY Family Hospice and Palliative Care cares for 3,100 patients annually in communities in 11 counties in Western Pennsylvania, with an average daily census of 250.

WISH REQUESTED **\$5,000**

Food Assistance Match



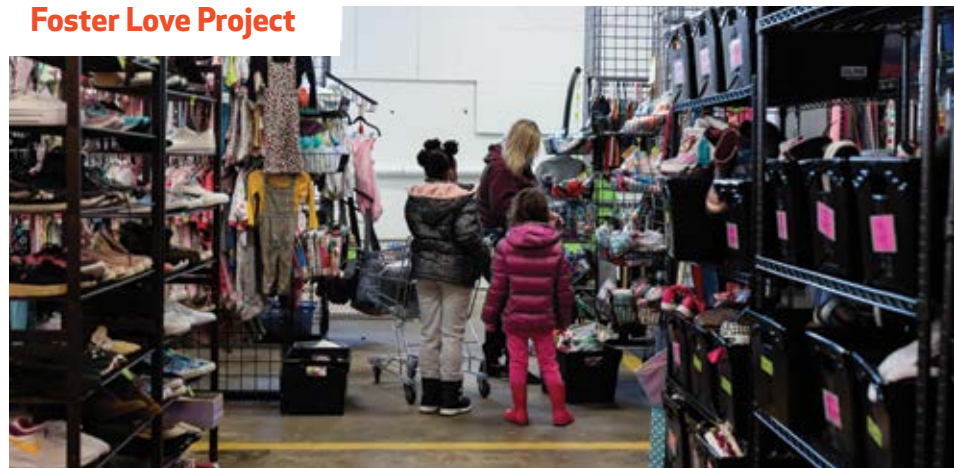
Food Assistance Match increases access to fresh, healthy food for food-insecure residents by providing a dollar-for-dollar match to government assistance recipients at local farmers markets, using a dignity-first approach. Food Assistance Match's matching program has served tens of thousands since 2020. The program doubles the purchasing power for farmers market attendees who receive food assistance benefits, eliminates the indignity some may feel when utilizing these benefits, and boosts revenue for local farmers and small business vendors. Funds will enable Food Assistance Match to adopt a first-in-the-nation point-of-sale technology that converts all food assistance benefits into one easy-to-use FAM gift card, providing a checkout experience similar to that of credit card users and enabling faster payments for farmers and vendors. Connecting underserved community members to local farmers markets fosters community health through the well-documented physical, social and mental health benefits of eating fresh foods.

PRIMARY COUNTY SERVED Allegheny

POPULATION SERVED ANNUALLY In 2024, Food Assistance Match provided \$119,000 in matching food assistance to 550 SNAP-eligible families and 1,880 low-income seniors.

WISH REQUESTED **\$5,000**

Foster Love Project



Foster Love Project's mission is to show love in action to children impacted by foster care and kinship care through the provision of goods, services and support. For many of the nearly 15,000 children in the system in Pennsylvania, their stay in foster care is brief. For others, foster care can last for years. Foster Love Project manages seven programs designed to provide the critical support foster children and adoptees need to fulfill their potential. Foster Love Project accomplishes its goals by walking alongside families and children in need, with a focus on youth undergoing family reunification and youth in need of support during family preservation efforts. The project's largest program is its free Shopping Center, which provides families with assistance in purchasing hard-to-come-by items, such as cribs, beds, mattresses, high chairs and groceries. Funding will be used for this Family Support effort.

PRIMARY COUNTY SERVED Allegheny

POPULATION SERVED ANNUALLY Foster Love Project serves up to 4,000 youth annually through its seven programs.

WISH REQUESTED **\$5,000**

Free-Op Community Store



Free-Op Community Store is committed to helping neighbors meet their basic needs with dignity, care and accessibility. Operating as a nonprofit thrift store, Free-Op thrives as both a resource and a symbol of community solidarity. A unique pay-what-you-can basic needs store, Free-Op ensures that everyone, regardless of financial circumstances, can access high-quality clothing, home items, personal care products, toys, diapers and more. By removing the barrier of fixed prices, the store fosters a sense of inclusion, free from stigma or judgment. The store extends its impact by housing a Westmoreland Food Bank emergency pantry, ensuring local residents have access to critical food resources when they need them most. With its wide range of offerings, Free-Op addresses the complex and interconnected challenges of financial hardship, helping families stay afloat during difficult times. Funding will bolster operational capacities, with the intent of serving a broader number of community members.

PRIMARY COUNTY SERVED Westmoreland

POPULATION SERVED ANNUALLY Free-Op is open 3-4 days a week (15-20 hours of service) and has facilitated approximately 3,000 shopping experiences.

WISH REQUESTED \$5,000

Growing Up Greene



Growing Up Greene strives to reduce the impact and severity of childhood traumas, ultimately promoting healthier, happier local communities. Its annual Children's Winter Gear Distribution has outfitted over 1,400 kids in warm clothing and accessories in the past five years, including coats, boots, pajamas, hoodies, T-shirts, blankets, gloves and hats. This endeavor reduces the stigma many impoverished children face regarding inadequate clothing and allows hundreds of families living in financial instability to allocate their funds to other essential needs. Program participation has grown steadily since the first distribution in 2020. Last year's record-breaking attendance of 594 children highlighted the growing uncertainty in an area with little economic development. Funds would be used to collect and purchase warm winter boots and waterproof gloves, the most pressing needs currently associated with this program.

PRIMARY COUNTY SERVED Greene

POPULATION SERVED ANNUALLY Growing Up Greene's expanded programming now regularly serves over 1,000 children every year.

WISH REQUESTED \$5,000

Heroes Never Alone



Heroes Never Alone is committed to ending veteran homelessness by providing affordable transitional and permanent housing with vital wrap-around services. Housing is the first step toward healing, and paired with community support, financial counseling, employment assistance, PTSD care, service dogs and outdoor activities, it's possible to empower the whole individual — at no cost to the veteran. The organization's Ligonier campus has proved successful, with two permanent residences and included services. Building on this success, Heroes Never Alone is launching two Tiny Home Villages: five homes on donated land in Indiana County and 8-10 homes on a parcel in Westmoreland County. Both will provide stable housing and access to services. In Pennsylvania, 6.5% of veterans live below the poverty line, including 1,450 in Westmoreland County. Funds can transform this risk into resilience, directly advancing the Indiana County Tiny Homes Village and ensuring no hero stands alone.

PRIMARY COUNTY SERVED Westmoreland

POPULATION SERVED ANNUALLY Heroes Never Alone served 436 veterans and 11 military spouses in 2024: 362 food rations, 13 veteran housing placements, four service dogs and 46 general assists.

WISH REQUESTED **\$5,000**

Hilltop Urban Farm



Hilltop Urban Farm is a neighborhood resource that grows food, grows farmers and grows community in the Hilltop neighborhoods, with the aim of taking a bigger bite out of food insecurity in the area. Its Community Farm donates produce to three food banks serving Hilltop. Due to the need to increase production to feed more families, the organization is expanding the size of the Community Farm and taking steps to lengthen the growing season. Meanwhile, teachers and partners want to bring more students to outdoor learning opportunities at the Youth Farm, and a growing number of individuals want to join the Farmer Incubator Program to gain experience and skills necessary to operate their own urban farms. Hilltop Urban Farm needs additional operating support to purchase essential items including seed, water, harvest bins, youth-sized gardening tools, new harvest materials and equipment, mulch and compost, and to maintain a delivery vehicle.

PRIMARY COUNTY SERVED Allegheny

POPULATION SERVED ANNUALLY Community Farm donations assist 275 families per week, the Youth Farm serves 550 kids, and 10 individuals participate in the Farmer Incubator Program.

WISH REQUESTED **\$5,000**

Hope Ministries of McKeesport Inc.



Hope Ministries of McKeesport meets the needs of vulnerable individuals and families in McKeesport, shares with its neighbors and helps them understand they have hope and a future. McKeesport's poverty population (30%) makes the organization's food services especially crucial. However, many of Hope Ministries' neighbors are elderly (33%) or disabled (15%), and they cannot enter the building safely. Hope Ministries has the food, volunteers and community ready to gather, but it lacks a facility that supports full participation. Although it delivers meals to many isolated residents at their homes, they miss out on the warmth, connection and dignity of sharing a meal together. Requested funds would help cover the cost of building an accessibility ramp at its facility, renovating a gender-neutral, handicap-accessible restroom and updating the air-conditioning system. This support would bring Hope Ministries closer to making its building fully accessible and climate-safe for the people who need it most.

PRIMARY COUNTY SERVED Allegheny

POPULATION SERVED ANNUALLY Hope Ministries annually serves 500 individuals of all ages, singly or in families, with food and resources for rent and utilities.

WISH REQUESTED **\$5,000**

MA's Pantry



MA's Pantry assists low-income families with food security, nutrition and access to social services. Due to significant reductions in funding for food assistance programs and the rising cost of food, MA's Pantry is experiencing a sharp increase in demand and costs. Monthly expenditures on food have increased fivefold, and the number of eligible recipients has risen by 35%. The pantry also suffered a major loss of food in storage as a result of a roof leak in its building. Today, the venerable 42-year-old food pantry is faced with budget struggles comparable to those it serves. Compared to Allegheny County's overall unemployment rate, unemployment in East McKeesport is twice as high, and in North Versailles, it is 2½ times as high. Similarly, the poverty rate in North Versailles is 14.7%, well above the 11.5% rate for Allegheny County. Funds would help the pantry purchase food to help feed its impoverished neighbors.

PRIMARY COUNTY SERVED Allegheny

POPULATION SERVED ANNUALLY MA's Pantry serves approximately 6,600 individuals annually. All qualify under federal and state poverty requirements.

WISH REQUESTED **\$5,000**

MAYA Organization



Swissvale-based MAYA Organization empowers Black, Indigenous and people of color as well as marginalized birthing people and birthworkers, creating positive change in the systems that impact them. Its doulas, mentors and counselors are trained to deliver equitable, comprehensive care to the majority Black and Latina clients it serves. In addition to perinatal classes and mentorship, MAYA provides labor and delivery support (doula care) and counseling for pregnant and postpartum individuals. It also actively participates in the landscape of birth and birth equity in Pittsburgh and frequently collaborates with partners working to improve outcomes for Black and brown birthing people. Requested funds would go toward purchasing incentives for MAYA's clients. At an average cost of about \$65 per gift, MAYA can purchase 77 car seats, bassinets and other items for participants who complete a series of eight classes.

PRIMARY COUNTY SERVED Allegheny

POPULATION SERVED ANNUALLY MAYA Organization serves 1,000 women and birthing people.

WISH REQUESTED **\$5,000**

Murrysville Meals on Wheels



Murrysville Meals on Wheels is committed to assisting our neighbors — homebound seniors and individuals who may be frail, ill or disabled — who wish to live independently in their own homes. Volunteers provide a vital meal delivery service of high-quality, nutritional meals to those who face challenges with mobility, shopping and cooking due to aging, illness or disability. Volunteers are kind and friendly, genuinely valuing and caring for those they serve. Funds will offset the rising cost of basic meal preparation ingredients, rising utility costs and the purchase of a new laptop. Last year, 93% of the budget went toward purchasing food supplies and delivery containers. Funding is needed to meet rising costs while maintaining quality levels of hot meals and bagged lunches. Meals on Wheels receives no federal, state or local government funding and is dependent on volunteers for meal delivery, administrative oversight and more.

PRIMARY COUNTY SERVED Westmoreland

POPULATION SERVED ANNUALLY Murrysville Meals on Wheels delivers hot and cold meals four times per week to 50 homebound individuals, delivering approximately 9,600 meals per year.

WISH REQUESTED **\$5,000**

National Ovarian Cancer Coalition — Pittsburgh Market



The National Ovarian Cancer Coalition saves lives through the prevention and cure of ovarian cancer and improves the quality of life for survivors and caregivers. The deadliest of all gynecologic diseases, ovarian cancer has an extremely high rate of financial toxicity. No one should have to decide between basic needs and life-saving treatment. The coalition's Pittsburgh Market is requesting operating support to help meet the basic needs of the local ovarian cancer community. This includes complimentary meal delivery for anyone in treatment, ensuring that individuals undergoing chemotherapy don't need to worry about putting a warm meal on the table. It also includes financial assistance for nonmedical expenses such as transportation, rent, utilities, and child care or elder care for anyone in treatment who is below the 400% poverty line. Funds would provide local community members additional resources, including mental health support, other food delivery options, insurance navigation and more.

PRIMARY COUNTY SERVED Allegheny

POPULATION SERVED ANNUALLY National Ovarian Coalition — Pittsburgh Market serves 1,000-plus patients, survivors, caregivers, loved ones and advocates throughout the region.

WISH REQUESTED **\$5,000**

New Castle Public Library



New Castle Public Library inspires lifelong learning and fulfills the educational, recreational and informational needs of its community. New Castle has a population of 21,413 people; 26.4% live in poverty and face food insecurity. Most students come from economically disadvantaged families, and many don't have a safe place to go after school. In 2023, the library established its Kids Fridge with the help of Lawrence County Empty Bowls and Greater Pittsburgh Community Food Bank. It partners with local businesses to provide snacks to kids who visit the youth services floor of the library. Unfortunately, in 2025, the library lost a large portion of its Kids Fridge funding and had to relocate the snacks. Funds would help the library purchase and stock a new refrigerator for the Youth Services Department. By re-establishing this necessary service, the library can continue to provide snacks to combat food insecurity among its young patrons.

PRIMARY COUNTY SERVED Lawrence

POPULATION SERVED ANNUALLY The New Castle Public Library serves 80,000 people yearly.

WISH REQUESTED **\$5,000**

North Hills Affordable Housing DBA HEARTH



HEARTH provides housing and a range of supportive services to homeless women who are survivors of domestic violence or other trauma, and their children. HEARTH empowers these families to become independent, economically self-sufficient and permanently housed. Its wraparound services include meeting housing and basic needs with fully furnished two- and three-bedroom apartments offering family-friendly amenities; group therapy and individual and family counseling to heal from trauma; and employment readiness through resume help, mock interviews, job search assistance, computer literacy instruction, mentorship and education. On-site child care enables mothers to work or attend school despite limited subsidized options. HEARTH also offers workshops on budgeting, credit, debt reduction and taxes, as well as transitional support, including case management and financial aid. Funds would help HEARTH and HEARTH families continue to secure and maintain permanent housing and employment, achieving independence and financial self-sufficiency.

PRIMARY COUNTY SERVED Allegheny

POPULATION SERVED ANNUALLY HEARTH served 88 program participants in 2024: 23 single-mom-led households and 65 total children.

WISH REQUESTED \$5,000

Peoples Library



Peoples Library provides free access to information, programs and services for our community to aid in their pursuit of educational, informational and recreational interests. Nearing its 100th anniversary, the Peoples Library was created by community members and has been a vibrant community anchor ever since. Peoples Library directly serves seven municipalities, two of which have population poverty rates of 15% or higher. The community benefits greatly from the Peoples Library programming, which includes author talks, mindfulness workshops, hands-on children's activities, collaborations enabling free entry to local museums, chess clubs for kids and adults, and much more. The vast majority of the funding received goes directly to staffing, materials, resources, programs and services, leaving funding levels low for upkeep of staff areas of the library. Funding will be applied to the replacement and upgrade of a staff entrance door at the New Kensington location, ensuring safety and security.

PRIMARY COUNTY SERVED Westmoreland

POPULATION SERVED ANNUALLY 36,327 people visited Peoples Library in 2024. The population of its assigned service area is 40,970.

WISH REQUESTED \$5,000

Proud Haven



Proud Haven provides safe, affirming housing and supportive services for LGBTQ+ youth experiencing homelessness as it prioritizes dignity, resilience and peer-led empowerment in Pittsburgh. Proud Haven works collaboratively within the QMNTY Continuum, a cooperative project with Trans YOUNiting. It includes YOur Haven Shelter, the QMNTY Center for programming and community events, and the QMNTY Closet, which provides tangible essentials such as clothing, hygiene products and pantry goods. Operational funding will sustain 24/7 staffing at Proud Haven's housing site, replenish comfort and care supplies, and support trauma-informed training for volunteers. As referrals increase and resources remain stretched, this investment helps Proud Haven uphold its mission: to provide safe shelter, support and connection for youth facing systemic barriers. Every dollar moves it closer to a future rooted in dignity, empowerment and radical care.

PRIMARY COUNTY SERVED Allegheny

POPULATION SERVED ANNUALLY Proud Haven serves 150 LGBTQ+ youth annually with housing, tangible goods, networking and support services.

WISH REQUESTED **\$5,000**

Reagan's Journey



Reagan's Journey makes life better for children with special needs through its free Pediatric Equipment Closet. The organization believes that no equipment should be sent to the landfill or scrapyard, and medical supplies shouldn't end up in the trash when another family in desperate need can use them. Health disparities are a significant issue worldwide, including in the Pittsburgh region. Insurance limitations, lack of insurance, lack of citizenship or documentation for access to proper health care, separated families, low-income families and an increase in referrals from hospitals and therapy agencies in the region have required Reagan's Journey to be more available to those who need its services. Additional funds will allow it to meet the increased demand for the equipment closet by adding two more days of operation per week via remote access pickup. These increased resources will allow Reagan's Journey to help 66% more families.

PRIMARY COUNTY SERVED Allegheny

POPULATION SERVED ANNUALLY Reagan's Journey currently serves 12 families per week or more than 600 families per year through its physical location in Freeport.

WISH REQUESTED **\$5,000**

Rostraver Public Library



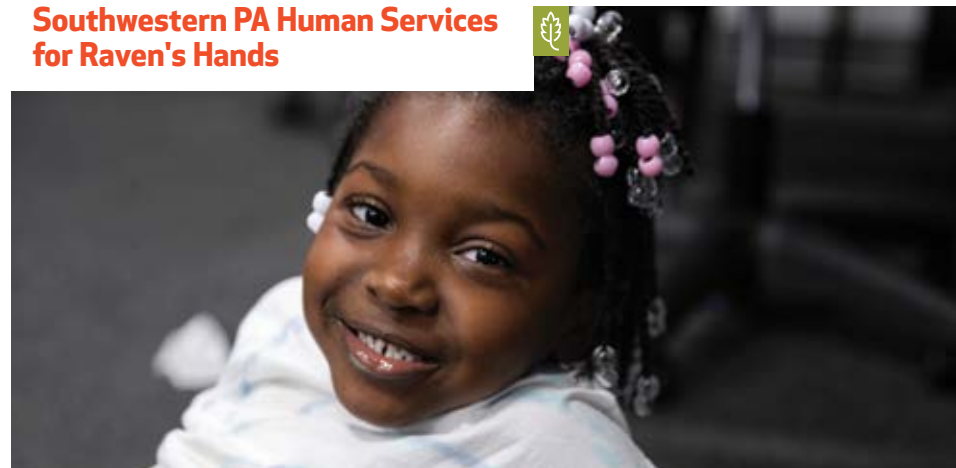
Rostraver Public Library is committed to inspiring our community to learn, create, connect and grow. Together with its Smithton Public Library branch, the library strives to serve all members of the community with free resources and programs. The library constantly works to engage early readers and encourage regular use. Rostraver Public Library is establishing a backpack project that will add themed activity backpacks to the children's rooms. Each backpack will include books, educational toys/manipulatives, activities and learning handouts with literacy tips. Whether the backpacks are explored in the library or at home, the materials will help young readers connect reading with their world through hands-on learning. The addition of this new resource will help the library grow through increased interest, circulation and membership. Funds will be used for the materials and staffing to establish the backpack program and engage young readers at both Rostraver and Smithton Public Libraries.

PRIMARY COUNTY SERVED Westmoreland

POPULATION SERVED ANNUALLY The Rostraver and Smithton Public Library service area is 17,723 people.

WISH REQUESTED **\$5,000**

Southwestern PA Human Services for Raven's Hands



Raven's Hands empowers families through information, resources and meeting essential needs, offering healing and service through creative solutions toward transformed, resilient lives. In just six months in operation, Raven's Hands has fulfilled essential item requests for over 120 families, hosted two community events, distributed strollers, blankets, nursing pillows and safety items, and referred more than 40 families to vital resources like formula and diaper banks. Raven's Hands also provides education on safe sleep, infant feeding and community safety. Funding would strengthen Raven's Hands' ability to meet the growing need for essential household and child care items, such as beds, baby gates and blankets, and allow for the expansion of the organization's popular stress-relief programming. Hiring a Community Health Worker focused on mental health for children, adults and families will address a pressing need. Supplies, stress reduction and mental health support will go far toward building a healthy community.

PRIMARY COUNTY SERVED Westmoreland

POPULATION SERVED ANNUALLY Raven's Hands will serve an estimated more than 360 families in 2025, based on projections from the first four months in operation.

WISH REQUESTED **\$5,000**

STEM Coding Lab



STEM Coding Lab provides students in grades K-8 with the skills to succeed in a digital economy. What started as a small initiative serving 15 students in 2017 has grown exponentially. Today, the lab instructs over 3,400 students across 28 locations, with eight teachers providing 160 classes each week. The computer science classes are delivered in school, after school, and through summer camps, focusing primarily on schools where over 70% of students qualify for free or reduced lunch (eligibility based on low household income). With nearly 13,000 open computer science jobs in Pennsylvania and salaries exceeding \$100,000, the demand for skilled workers has never been higher. According to a National Skills Coalition study, 92% of jobs in the U.S. labor market require digital skills, but less than 30% of K-8 students in Pennsylvania have access to foundational computer science education. Funds would go toward closing that digital skills gap.

PRIMARY COUNTY SERVED Allegheny

POPULATION SERVED ANNUALLY STEM Coding Lab served 3,450 youth in 2024-25, with the goal of serving 10,000 students in 2028 and adding two to three more communities.

WISH REQUESTED **\$5,000**

The Blessing Board



The Blessing Board provides donated household furnishings to those in need at no cost. Its Day of Blessing program invites families to select furniture and home goods while trained volunteers and staff provide a spiritually and emotionally supportive experience filled with dignity and respect. The Blessing Board holds eight to 10 Days of Blessing per month out of its Shaler location and three to four from its West Mifflin location. Its Home Medical Equipment Program provides free supplies to uninsured or underinsured individuals. Both programs have grown each year, and the Blessing Board has seen an increased demand, from 400 calls per month in 2025 to an average of 500 in the first six months of 2025. Support for general operations will allow the Blessing Board to meet the needs of more people in the community, supporting 10 additional families or one fully scheduled Day of Blessing.

PRIMARY COUNTY SERVED Allegheny

POPULATION SERVED ANNUALLY The Blessing Board served 1,657 families in 2024.

WISH REQUESTED **\$5,000**

The Pittsburgh New Church School



The Pittsburgh New Church School educates children, regardless of their economic status, specifically focusing on improving literacy skills for students who struggle with learning difficulties. Many families are desperate for a school that understands their child's challenges and has the tools to support them, yet the cost of private school tuition remains a barrier for many families, particularly those from low-income households. The very students who benefit most from Pittsburgh New Church School's personalized approach are often those who can least afford it. This school year, over 90% of students receive some form of tuition assistance. Without increased funding, the school risks having to turn away students who would flourish in its environment simply because their families cannot afford tuition. Requested funds would be designated entirely for the school's scholarship fund, helping bridge the gap for families in need and continue its mission of inclusion and access for all learners.

PRIMARY COUNTY SERVED Allegheny

POPULATION SERVED ANNUALLY The school serves 30 families with students in grades K-8, and its summer camp adds 20 more families, for a total of 50 families.

WISH REQUESTED **\$5,000**

The Promise Center of Homewood



The Promise Center of Homewood offers many different initiatives focused on tackling community violence, with an emphasis on its adverse effects on youth. The Promise Center's building is situated in a low-income area of Pittsburgh, where many community members lack access to fresh fruits and vegetables. With the center's new garden, students can grow and eat what they produce while learning about sustainable environmental practices. Additionally, the center continues its STEAM programming with the assistance of Carnegie Mellon University students. During this program, Promise Center students learn about coding, following instructions and group collaboration through LEGO building. Additional funding will support both existing after-school programming and the center's new garden programming.

PRIMARY COUNTY SERVED Allegheny

POPULATION SERVED ANNUALLY The center has served over 2,000 members of the Homewood community since its opening in 2022. It serves over 65 children every day.

WISH REQUESTED **\$5,000**

This Generation Connect



This Generation Connect supports and strengthens the expansion of healthy food access and accessibility initiatives in East Pittsburgh and surrounding Mon Valley communities through its food pantry, food distributions and community feeds. The organization partners with local caterers to teach seniors to teens how to make entrees with limited food resources. It also works with 412 Food Rescue, the local community food bank, GFS and other local stores and restaurants to support food initiatives. Since 2020, This Generation Connect has served and supported approximately 3,765 families and 4,978 individuals. This Generation Connect is a 100% volunteer-run organization, and it would like to use funds to have a volunteer recognition celebration for the unsung heroes and sheroes who serve tirelessly to ensure communities have access to food. Additional support would aid free community meals and support the monthly food distributions and the food pantry housed within the Connect Center.

PRIMARY COUNTY SERVED Allegheny

POPULATION SERVED ANNUALLY This Generation Connect has served an average of about 1,050 families and 1,456 people each year since 2020.

WISH REQUESTED \$5,000

West Overton Village and Museums



West Overton Village and Museum cultivates connections between the past and present to forge pathways to the future through diverse programs, exhibitions and events. The organization seeks support to purchase a used utility vehicle (UTV) or small tractor to assist in operating three business segments across a 30-acre campus, which includes frequent moving of large quantities of chairs, tables and supplies. A local mechanic has advised that funds are better spent on a new UTV rather than on repairs for the existing vehicle. Because of a lack of funding, staff have been using personal vehicles — an unsustainable solution. To be ready for a robust annual private event and program schedule, which includes approximately 20 weddings, many museum programs and monthly events in the Educational Distillery, West Overton hopes to replace this critical piece of equipment, allowing a sustained schedule and guest experience and enabling staff to work more efficiently.

PRIMARY COUNTY SERVED Westmoreland

POPULATION SERVED ANNUALLY West Overton serves approximately 10,000 people, including museum admissions and programs, distillery visits and private event attendees.

WISH REQUESTED \$5,000

West Ridge Christian Community Church



West Ridge Church helps people develop close relationships with God and desires to see them saved, healed, set free, disciplined, equipped, empowered and serving Jesus Christ. Since its inception in 2018, the church's Ridge Pantry has grown to serve 100 low-income individuals per month. However, demand has consistently exceeded capacity. Requested funds would help the pantry allocate more resources to food procurement and essential equipment, such as refrigeration units and storage shelves. These improvements will directly expand the church's ability to serve an additional 70 waiting individuals, increasing its reach from 150 to 220 individuals per month for at least one year. More working parents, seniors and children will gain reliable access to fresh food, moving from food insecurity to greater stability. Providing basic needs through Ridge Pantry is a tangible demonstration of West Ridge Church's commitment to loving God by loving people.

PRIMARY COUNTY SERVED Allegheny

POPULATION SERVED ANNUALLY West Ridge Church serves 3,672 individuals through the church and its programs, such as the pantry, Awaken youth ministry and Ridge Academy.

WISH REQUESTED **\$5,000**

Western Pennsylvania Diaper Bank



Western Pennsylvania Diaper Bank ensures babies in need are clean, healthy and dry. Now in its second decade, the bank addresses the entire family's basic necessities, including period products and incontinence supplies. It addresses these urgent needs among communities disproportionately affected by poverty while also responding to the growing number of households across all income levels now struggling to afford such items. One in two U.S. families with young children struggle to afford enough diapers, and one in four girls miss school because they cannot afford period supplies, and there is no government assistance to help. Over the past five years, the bank has expanded to eight counties. Yet it still has a waitlist of social service agencies eager to distribute diapers and hygiene products. Requested funding will allow the bank to add new partners, helping more babies, caregivers and seniors access the essentials they need for stability and well-being.

PRIMARY COUNTY SERVED Allegheny

POPULATION SERVED ANNUALLY Western Pennsylvania Diaper Bank served 17,288 families with diapers, 900 individuals with period products and 500 seniors with incontinence supplies in 2024.

WISH REQUESTED **\$5,000**

Westmoreland Children First



Westmoreland Children First promotes the safety, security and welfare of children and families in Westmoreland County. Its Beds for Kids project is the only program that provides beds exclusively to children under the care of Westmoreland County Children's Bureau. Since 2015, it has funded the purchase of bed frames, mattresses and linens for children who sleep on couches, on floors, with their parents or, in some homes, even in drawers. The organization partners with Westmoreland Community Action, paying for beds as well as bed and crib delivery. Westmoreland Children First provided 102 beds to children in 2023 and 115 beds in 2024. However, demand ranges from 40 to 60 beds a month. The approximately nine beds provided monthly last year fell far short of the need. Funds will go toward buying 25 bed frames, mattresses and linens for the area's most vulnerable kids.

PRIMARY COUNTY SERVED Westmoreland

POPULATION SERVED ANNUALLY In 2023, Westmoreland County Children's Bureau served 6,731 children. In 2024, that number grew 17% to 7,899 children served.

WISH REQUESTED **\$5,000**

Will Allen Foundation



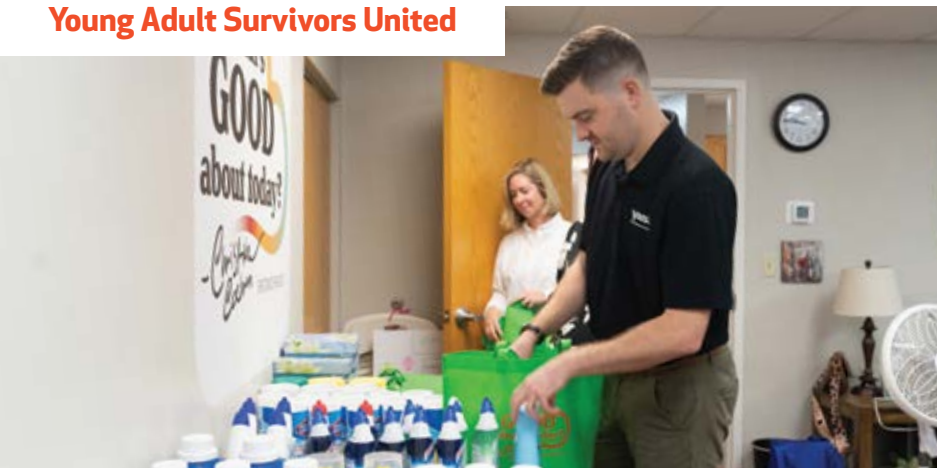
The Will Allen Foundation empowers youth through mentorship and enrichment programs that promote physical, mental and emotional wellness and help students thrive in school and in life. The foundation wishes to support high school students from Clairton and The Neighborhood Academy as they explore future career pathways through immersive, hands-on learning. Each year, it engages dozens of high school students across both sites in workforce development programming with a focus on high-demand fields such as robotics and nursing. Funds would help remove critical participation barriers by covering transportation for career exploration field trips and providing milestone-based incentives to sustain engagement in programs such as the CMU Pre-College Robotics Academy. It will also support student celebrations that reinforce confidence and belonging.

PRIMARY COUNTY SERVED Allegheny

POPULATION SERVED ANNUALLY The Will Allen Foundation serves about 200 youth annually via enrichment, career readiness and a backpack program for families in need.

WISH REQUESTED **\$5,000**

Young Adult Survivors United



Young Adult Survivors United provides young adult cancer survivors (age 18-45) and their caregivers with age-appropriate emotional/mental health, social and financial support. Cancer in young adulthood upends a critical life stage marked by growing independence, career-building and relationships, replacing it with medical dependency, financial strain and emotional turmoil. Beyond treatment, these survivors need peer support, behavioral health care and financial assistance to rebuild their lives. Each year, the organization provides more than 120 individuals with access to professionally led support groups and distributes over \$60,000 in aid. A recent survey of participants in the group's monthly socials revealed that 88.6% feel less isolated after engaging in a wellness social, 88.6% have reduced financial stress from participating in free programming, and 85.7% believe that the organization provides unique, uplifting and engaging social experiences. The programs empower survivors to reclaim their health, stability and purpose.

PRIMARY COUNTY SERVED Allegheny

POPULATION SERVED ANNUALLY Young Adult Survivors United serves more than 1,300 individuals.

WISH REQUESTED **\$5,000**



Jill Pennetti, owner of "Forgotten Flour," makes gluten-free cookies. She is part of the Three Rivers Business Alliance, p. 47. Photo by Renee Rosensteel.

ECONOMIC MOBILITY

Abiding Missions 44

Connecting Champions 44

Industrial Arts Workshop Inc. 45

Life Ain't Scripted Inc. 45

Open Hand Ministries Inc. 46

The Jeannette Initiative 46

Three Rivers Business Alliance 47

Three Rivers Community Inc. 47

WIN-Spirations Inc. 48

Abiding Missions



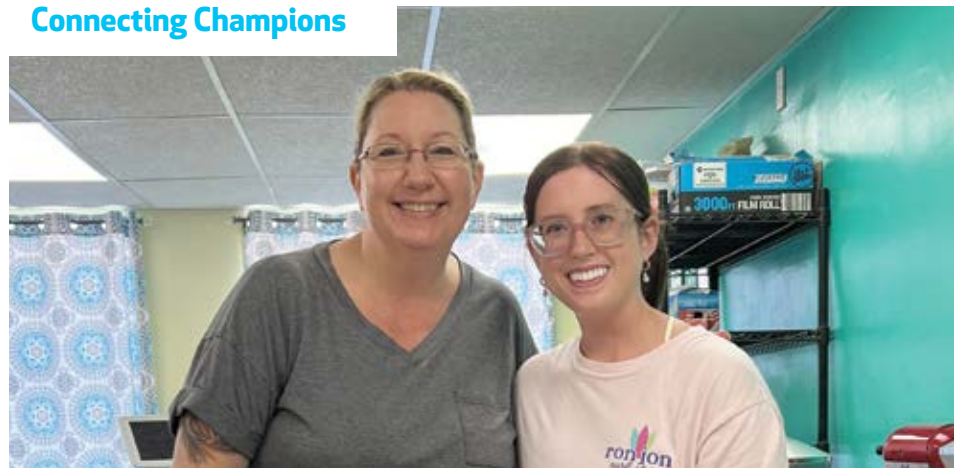
Abiding Missions empowers Allentown and South Hilltop communities by meeting families' daily needs and enriching the lives of the youth. In the summer of 2025, Abiding Missions launched its BOLT (Building Our Leaders Today) for Success program to assist local youth in goal planning. Sessions covered topics such as job skills, SAT prep, financial literacy, social-emotional learning, and college and training visits, delivered in partnership with UPMC, Bank of America, Dollar Bank and Freeman's YOUNique Education Consulting. The youth visited Carnegie Mellon University, PennWest California and the IBEW Training Center and participated in a presentation on historically Black colleges and universities. In the program's first year, 24 young people participated, nearly double the anticipated number. These youth all came from South Pittsburgh and were primarily Black and biracial. Funds will help cover the costs of college and training tour transportation, meals and snacks during sessions, and incentives for participation.

PRIMARY COUNTY SERVED Allegheny

POPULATION SERVED ANNUALLY Abiding Missions serves 875 people across all programs and 24 youth in BOLT for Success.

WISH REQUESTED **\$5,000**

Connecting Champions



Connecting Champions asks kids and young adults with cancer, "What do you want to be when you grow up?" and provides a career-based mentor to help them achieve a brighter future. It helps young people gain skills and knowledge, find direction and pursue their passions. Through in-person and virtual programs, Connecting Champions has paired hundreds of young people with mentors from over 200 career paths, such as NASA engineers, artists, welders and cake decorators. Each mentor visit is centered on a hands-on passion project, such as building a robot or designing a comic book. As one young adult explains, the organization gives kids and young adults a chance to be more than "a bald head and an IV pole." The growth has been unprecedented, as referrals tripled in the past year. Funds would go toward helping more severely at-risk young people survive the cancer journey and step into their future.

PRIMARY COUNTY SERVED Allegheny

POPULATION SERVED ANNUALLY Connecting Champions serves 100 kids and young adults who have or had cancer.

WISH REQUESTED **\$5,000**

Industrial Arts Workshop Inc.



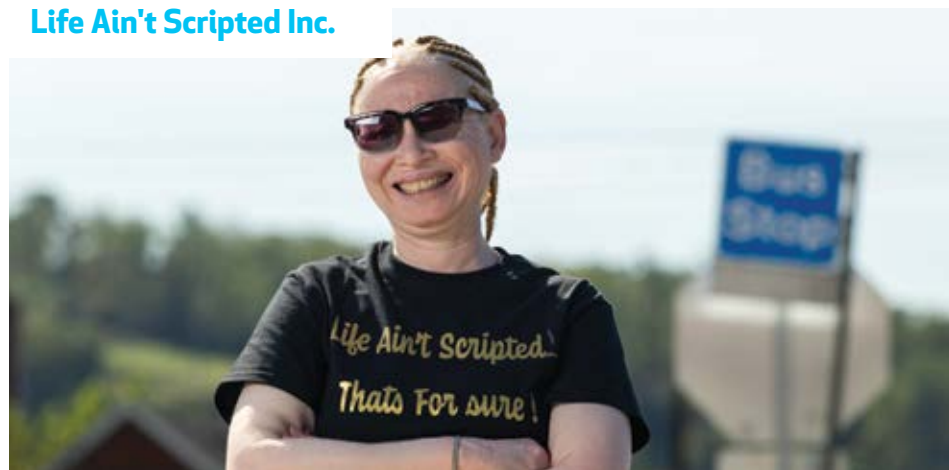
The Industrial Arts Workshop empowers Pittsburgh-area youth at the intersection of arts, community development and workforce readiness. Many high school students need a career plan that doesn't involve college, yet they are often unaware of career options in the trades. Meanwhile, there is a dearth of qualified applicants for jobs in manufacturing, trades and construction. Welding is a critically needed skill and provides a living wage. Industrial Arts Workshop is unique because it uses the arts as the context for weld training. It works with students from low-income families diverse in ethnicity and gender; many have faced trauma in their lives. It combines a curriculum based on American Welding Society standards with art projects that boost students' creativity and confidence. This spring, the organization began visiting high schools and community events with its Mobile Welding Lab, outfitted for demonstrations with a generator and welding equipment. Requested funds would help continue this mobile education and outreach programming.

PRIMARY COUNTY SERVED Allegheny

POPULATION SERVED ANNUALLY In 2024, Industrial Arts Workshop supported 208 teenagers with 701 hours of skill-based learning opportunities.

WISH REQUESTED **\$5,000**

Life Ain't Scripted Inc.



Life Ain't Scripted focuses on albinism awareness, empowering people of all ages and fostering love, respect and understanding for a more tolerant world. It elevates digital literacy for individuals with albinism through a dynamic co-creative initiative with Carnegie Mellon's Social Haptics Robotics and Education (SHRED) Lab. The initiative will adapt the lab's open-source haptic mouse, a 3D-printed tool originally developed for blind and visually impaired users, into a device tailored to the unique visual profiles of people with albinism. Albinism often results in low-resolution vision, sharp in edge detection but lacking detail — distinct from typical low-vision challenges and making conventional tools less effective. Through a series of digital literacy workshops, participants will learn to navigate digital content using the haptic mouse and contribute to its customization. This participatory design model ensures the tool meets their needs while fostering confidence, agency and a stronger sense of belonging in digital spaces.

PRIMARY COUNTY SERVED Allegheny

POPULATION SERVED ANNUALLY Generally, Life Ain't Scripted serves 25 families per year.

WISH REQUESTED **\$5,000**

Open Hand Ministries Inc.



Open Hand Ministries empowers marginalized people by building an assets-based community focused on education, financial wellness and affordable homeownership, with the goal of creating and preserving generational wealth. Families new to homeownership and financial planning have crossed many hurdles, and yet a few more stumbling blocks lie in their path to create legacy wealth. There is often a void in their awareness of what is needed to maintain their home and grow their assets. Even more understanding is necessary to plan for their estate to be passed to future generations. Frequently, in this demographic, homes are lost to the family because there was no will. Requested funds will help Open Hand provide new workshops and hands-on toolkits to improve maintenance knowledge and skills and emphasize the essential need for creating wills to preserve estates and wealth for families.

PRIMARY COUNTY SERVED Allegheny

POPULATION SERVED ANNUALLY Open Hand serves 150 people annually: 33 families working the steps in the financial wellness program and 50 individuals.

WISH REQUESTED \$5,000

The Jeannette Initiative



The Jeannette Initiative, a nonprofit community development organization, focuses on revitalizing, stabilizing and benefiting the city of Jeannette economically and socially. As it works to achieve Main Street designation from the state, it aims to help existing businesses and make the business district a welcoming place for entrepreneurs. Other initiatives include blight mitigation, determining the health of downtown and restoring one property for possible use as a business incubator. It hopes to offer low-interest loans and grants to those looking to open businesses or renovate existing ones, which could lead to more job opportunities for residents. Jeannette is also a known food desert. More customers, employment and traffic may convince a small grocer to offer fresh food. Operational funding would enable the organization to cover administrative fees associated with façade grants, mini-grants for local nonprofits and other programming.

PRIMARY COUNTY SERVED Westmoreland

POPULATION SERVED ANNUALLY The Jeannette Initiative serves the entire city of Jeannette, which has a population of 8,500. Separately, it serves 76 businesses.

WISH REQUESTED \$5,000

Three Rivers Business Alliance



The Three Rivers Business Alliance aims to support and promote LGBTQ+ businesses in the Pittsburgh and Greater Allegheny Region, fostering economic development, visibility and opportunity. With continued growth in membership and demand for programming, the alliance is scaling operations. Requested funding will expand and professionalize the alliance's member outreach and engagement efforts, enhancing its communications infrastructure and launching a formal onboarding program for LGBTQ+ and allied small business owners. This includes the purchase of membership management software, development of printed and digital welcome materials for new members, and creation of outreach tools such as branded thank-you cards, brochures and engagement packets. This would allow the organization to scale operations, better serve its business community and deepen its impact in serving LGBTQ+ business owners and entrepreneurs.

PRIMARY COUNTY SERVED Allegheny

POPULATION SERVED ANNUALLY The Three Rivers Business Alliance (3RBA) directly serves approximately 250 LGBTQ+ and allied business members each year.

WISH REQUESTED \$5,000

Three Rivers Community Inc.



Three Rivers Community empowers families through homeownership, education, workforce development and partnerships to break the cycle of generational poverty and achieve long-term self-sufficiency. Funds will be used to identify residents and inform them about available assistance programs. The funds will expand the reach and impact of Family and Resident Opportunity and Self-Sufficiency Programs by enhancing supportive services, providing participant incentives for achieving milestones and deepening collaboration with partners like Job Corps, HEARTH and the A. Philip Randolph Institute. Services will include financial literacy workshops, transportation assistance, child care stipends and more. Incentive funds will be used to recognize progress toward goals such as obtaining a degree, developing trade skills, securing employment or increasing household income. This award will also help strengthen data tracking and case management efforts, ensuring sound measurement outcomes and continuous improvement in helping families exit poverty.

PRIMARY COUNTY SERVED Allegheny

POPULATION SERVED ANNUALLY Three Rivers Community serves approximately 2,850 families and 5,700 people.

WISH REQUESTED \$5,000

WIN-Spirations Inc.



WIN-Spirations helps individuals with mental health diagnoses, intellectual and developmental disabilities, opioid and substance use disorders, and criminal histories overcome employment barriers, achieve self-sufficiency and successfully reintegrate into the community. Requested funding will expand workforce development services to meet growing demand and also support digital literacy training, employment readiness workshops, mentorship and access to resources such as professional clothing, hygiene items, food and technology. In addition, it will help purchase updated equipment, maintain its walk-in computer lab and provide one-on-one job search assistance.

WIN-Spirations seeks to break the cycle of generational impact by working with 18- to 24-year-olds from opioid-impacted households, guiding them into the trades through mentorship, education and internship opportunities that lead to lasting careers. To complement that work, it educates employers on how to support and retain these individuals, fostering inclusive workplaces that help participants maintain long-term employment.

PRIMARY COUNTY SERVED Westmoreland

POPULATION SERVED ANNUALLY WIN-Spirations engages more than 350 individuals in treatment, transitional housing, homeless families or the criminal justice system.

WISH REQUESTED \$5,000



Participants in Three Rivers Community Inc. programming listen to an instructor, p. 47. Photo by Nate Smallwood.



Friends of Murrysville Parks' William Davis pulls weeds in Duff Park in Murrysville, PA, p. 55. Davis has been with the group for 25 years. Photo by Jason Cohn.

ENVIRONMENTAL ACTION

Allegheny CleanWays 52

**Beaver County Marcellus Awareness
Community (BCMAC)** 52

Citizens for Radioactive Radon Reduction Inc. 53

CoNectar Flora to Table Education Inc. 53

Fair Shake Environmental Legal Services 54

Friends of Hempfield Parks 54

Friends of Murrys ville Parks 55

Humane Action Pittsburgh 55

Sewickley Creek Watershed Association 56

Turtle Creek Watershed Association 56

UpstreamPgh 57

Watersmith Guild Inc. 57

Allegheny CleanWays



To engage and empower people to eliminate illegal dumping and litter in Allegheny County, Allegheny CleanWays works alongside a committed crew of over 800 volunteers a year to remove litter and illegal dump sites, as well as host water-based cleanups of local rivers and streams, improving water quality and reducing flooding risks. The group's education programs for youth and adults empower residents to make informed waste management decisions. In 2024, Allegheny CleanWays was awarded \$120,000 in EPA funds as a subcontractor with the Allegheny County Health Department and the City of McKeesport. These funds were canceled by the federal government in 2025. Replacement funding allows continuation of programming. Whether sweeping storm drains to mitigate flooding issues, managing litter or removing illegal dump sites to combat blight, this work improves public safety and health for all residents and wildlife and decreases the harmful effects of trash on the environment.

PRIMARY COUNTY SERVED Allegheny

POPULATION SERVED ANNUALLY Allegheny CleanWays works anywhere there is need in Allegheny County and benefits the county's 1.2 million residents.

WISH REQUESTED \$5,000

Beaver County Marcellus Awareness Community (BCMAMC)



Beaver County Marcellus Awareness Community works to protect the residents of southwestern Pennsylvania from the harmful effects of fracking and petrochemical buildout by raising awareness through education and outreach. Funding will be used to upgrade environmental air monitoring equipment, expand data and strengthen the ability to respond quickly to frequent pollution events. With improved technology and expanded monitoring, the need for more accurate, real-time data will be addressed. Additional improvements include strengthening the team, increasing staff and volunteer involvement in data analysis, conducting community outreach and providing educational programming. By meeting the rising demand for public meetings, school presentations and environmental justice workshops, more people are informed, engaged and ready to take action.

PRIMARY COUNTY SERVED Beaver

POPULATION SERVED ANNUALLY Beaver County Marcellus Awareness Community serves all 165,000 residents of Beaver County, with advocacy and outreach throughout southwestern Pennsylvania.

WISH REQUESTED \$5,000

Citizens for Radioactive Radon Reduction Inc.



Citizens for Radioactive Radon Reduction is a 501(c)(3) nonprofit empowering communities through awareness, education and action to reduce radon gas exposure and its link to lung cancer in homes, schools and workplaces. Radon is a colorless, odorless, radioactive gas and the second leading cause of lung cancer — and the leading cause among never-smokers. At costs between \$1,200 and \$2,500 per location, mitigation is out of reach for many low-income households. Citizens for Radioactive Radon Reduction addresses this gap with a Radon Mitigation Fund that provides assistance to those most in need. Funds are used to support the installation of radon mitigation systems for income-qualified homeowners in the counties surrounding Pittsburgh. Each installation includes certified system design, all required materials, labor and follow-up testing. This project protects public health and promotes health equity by ensuring that vulnerable populations are not left behind in the fight against radon-induced lung cancer.

PRIMARY COUNTY SERVED Allegheny

POPULATION SERVED ANNUALLY Since June 2024, under the Pittsburgh PHRESH Project, Citizens for Radon Radioactive Reduction has been contacted by five homeowners in the Hill and Homewood area.

WISH REQUESTED \$5,000

CoNectar Flora to Table Education Inc.



CoNectar connects the Pittsburgh community to multi-sensory “flora-to-table” education by providing programs that demonstrate the importance of pollinators in food systems and our broader ecology. CoNectar manages +/-70 urban beehives at eight separate locations within six miles of downtown Pittsburgh. The group’s “Nectar Protector Program” pilot seeks to increase awareness of the ecological importance of pollinators through multi-sensory classroom lessons and nature excursions for middle-to-upper elementary school students (grades two through five), teaching the relationships between local flora and the pollinators that help bring healthy food to our tables. Initial community outreach will be in Pittsburgh neighborhoods and boroughs close to CoNectar’s existing bee yards, including Homewood, Hazelwood, the North Side, Millvale, Sharpsburg and Etna. Funding will help purchase materials (activity sheets, honey samples) and awards for students.

PRIMARY COUNTY SERVED Allegheny

POPULATION SERVED ANNUALLY CoNectar Flora to Table has served approximately 1,500 individuals during the first year of operation.

WISH REQUESTED \$5,000

Fair Shake Environmental Legal Services



Fair Shake is a nonprofit law firm and community empowerment organization that provides free and low-cost legal representation to underserved people and supports capacity building for community-driven policy and process change in local communities. The firm's work has uncovered a desire in Allegheny County communities for more active involvement in local decision-making processes to improve environmental conditions and quality of life in their communities. Funding will expand strategic guidance services toward effective change-making, turning goals into actionable processes. Support also will be directed toward implementing Community Democracy program capacity and skills-building trainings for community partners, including collaborative discussion, goals identification, tools for engaging public participation and effective civic leadership technique.

PRIMARY COUNTY SERVED Allegheny

POPULATION SERVED ANNUALLY Fair Shake Environmental Legal Services serves 5,000 people directly through 10 community coalitions in Allegheny County.

WISH REQUESTED \$5,000

Friends of Hempfield Parks



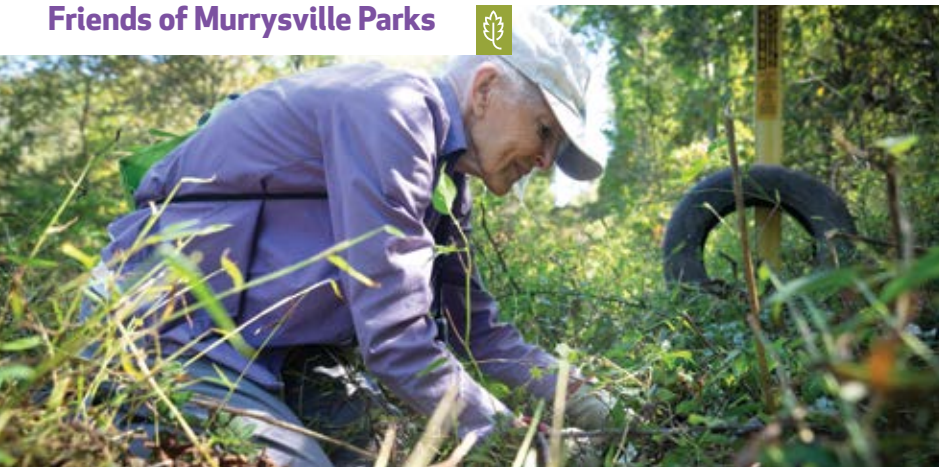
Friends of Hempfield Parks supports and grows Hempfield parks through engagement, fundraising, planning and ambassadorship to enhance recreation, strengthen community and ensure vibrant public spaces for future generations. Funding will go toward expanding community engagement and access to quality recreational spaces and programs. It will be used for small but meaningful park improvements, such as adding safety surfacing for neighborhood parklets, resurfacing basketball courts, and purchasing equipment to assist local recreation leagues. The upgrades will help meet the growing demand for safe, accessible and well-maintained public spaces. Funds will also support free or low-cost programs to ensure all community members can participate, regardless of income, and the fee assistance program, which helps families in financial need enroll their children in the Parks Department's Summer Day Camp.

PRIMARY COUNTY SERVED Westmoreland

POPULATION SERVED ANNUALLY Friends of Hempfield Parks serves the 41,000 residents of Hempfield and 60,000 residents in the surrounding communities of Greensburg, South Greensburg, New Stanton and others.

WISH REQUESTED \$5,000

Friends of Murrysville Parks



The mission of Friends of Murrysville Parks is to protect and restore native flora and fauna in municipal parks in Murrysville for people to enjoy. During the peak growing season, Friends of Murrysville Parks will remove more than 2,500 pounds of invasive plants, such as Japanese knotweed, Japanese stiltgrass and garlic mustard. Funding will be applied to buy tools, equipment and herbicide to help the volunteers and workers in managing the plants.

PRIMARY COUNTY SERVED Westmoreland

POPULATION SERVED ANNUALLY Friends of Murrysville Parks estimates 3,000 to 5,000 people per month visit the parks the organization helps protect.

WISH REQUESTED **\$5,000**

Humane Action Pittsburgh



Humane Action Pittsburgh works at the intersection of animal protection, environmental justice and community well-being by advancing equitable policies, education and community initiatives that empower residents, improve health and foster compassion. Funding will apply toward closing gaps for two key initiatives that advance the group's mission through art, education and equity: the second mural in the Love Your Wild Neighbor mural series, and the Youth Steering Committee. The mural, which will celebrate the oft-maligned pigeon, will transform a blighted city wall into vibrant public art while promoting empathy, environmental awareness and community pride. The Youth Steering Committee equips local high school students — many from underrepresented backgrounds — with advocacy, leadership and civic engagement skills, empowering the next generation to speak up for animals, environmental justice and social change.

PRIMARY COUNTY SERVED Allegheny

POPULATION SERVED ANNUALLY Humane Action Pittsburgh serves thousands of humans and animals throughout Pennsylvania.

WISH REQUESTED **\$5,000**

Sewickley Creek Watershed Association



Sewickley Creek Watershed Association promotes the restoration of natural resources in the Sewickley Creek watershed and educates watershed residents about sound environmental practices. The association reclaims abandoned coal mine lands and treats millions of gallons of polluted mine water at four sites in the watershed every day, removing harmful metals from the creek. Current grant funding does not cover expenses such as staffing costs, insurance, utilities, water quality monitoring, website and social media maintenance, and other administrative costs. Funding will generate more volunteers and membership support and also broaden the association's impact in educating community members about abandoned mine reclamation and its effect on the health of streams. It will support outreach programs including stream trash cleanups, fish stocking and Lowber Field Day, which educates 150 high school students annually.

PRIMARY COUNTY SERVED Westmoreland

POPULATION SERVED ANNUALLY The association serves 90 members, 260 event attendees and 150 email recipients. It has over 600 Facebook followers and serves seven school districts with 81,500 residents.

WISH REQUESTED \$5,000

Turtle Creek Watershed Association



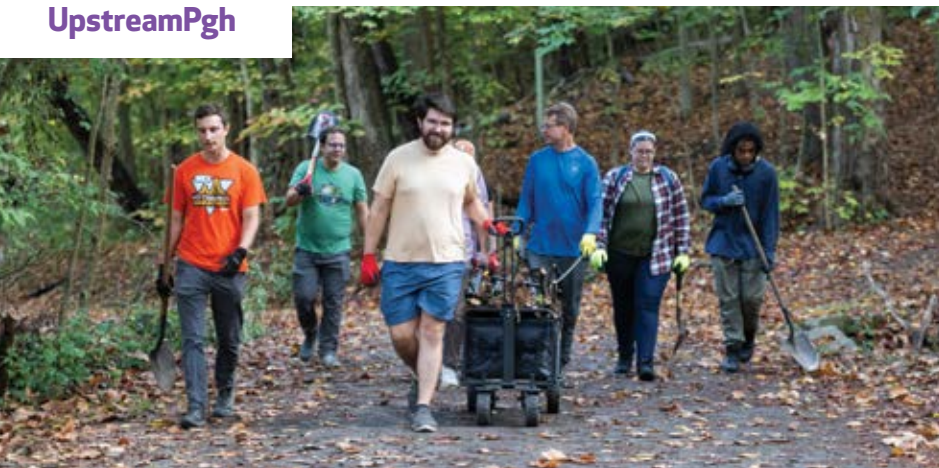
Working within the communities of the Turtle Creek Watershed, the association is committed to restore and protect one of our most valuable assets — clean water. Irwin, Pennsylvania, is the site of the fourth-largest discharge of abandoned mine drainage in western Pennsylvania. The Turtle Creek Watershed Association has recently purchased the 49-acre site of the former coal mine that caused this pollution. The association's goal is to build a water treatment system at that site to improve the water quality of the entire southern watershed. Currently, there is urgent need to create informational signage for the site itself, as well as educational brochures for the association's future public meetings, so that neighbors in Irwin can understand the scope of the abandoned mine pollution and the remediation plans. The goal is to educate as many community members as possible about the positive impact this work will have on their local environment.

PRIMARY COUNTY SERVED Allegheny

POPULATION SERVED ANNUALLY Turtle Creek Watershed Association serves all watershed residents, benefiting 89,325 people living near Brush Creek/lower Turtle Creek Valley.

WISH REQUESTED \$5,000

UpstreamPgh



UpstreamPgh restores and protects watershed ecosystems, working regionally to support and implement resilient solutions for a healthier urban environment. Demand is at an all-time high for UpstreamPgh's work as stewards of watershed ecosystems, as well as environmental advocacy. In 2024 and 2025, the group has seen a twofold increase in its volunteer cleanup events and environmental justice actions. From working alongside the Our Water Campaign to help pass the "Keep Pittsburgh's Water Public" referendum in May 2025, to planting over 1,000 native tree and shrub live stakes in one month to help stabilize the banks of Fern Hollow Creek in Frick Park, the group has taken on new projects that help ensure climate resiliency and just access to clean water and nature. Funding means UpstreamPgh can better meet the increased demand, replacing worn-out tools and equipment, ensuring adequate staffing for programs and purchasing needed supplies to continue expanding its reach.

PRIMARY COUNTY SERVED Allegheny

POPULATION SERVED ANNUALLY UpstreamPgh projects impact stormwater capture, water quality and environmental justice for well over 65,000 people annually.

WISH REQUESTED **\$5,000**

Watersmith Guild Inc



The Watersmith Guild's mission is to empower watershed conservation and improve lives for underserved youth through adventure, arts and education. The guild provides free programming that empowers underserved youth to become conservationists and citizen scientists through adventures in paddleboarding, filmmaking and environmental education. The guild's First Waves and Aqua Lab Adventure programs reach hundreds of students each year, offering mentorship and experiences that build self-esteem while inspiring a lifelong connection to nature. Youth consistently share how these programs open new doors, teaching teamwork and resilience while deepening their commitment to protecting local waterways. Funding will sustain vital staffing, transportation and programming resources to serve more youth facing hardships — and the waterways in need of their care.

PRIMARY COUNTY SERVED Allegheny

POPULATION SERVED ANNUALLY Each year, the Watersmith Guild serves more than 200 youth from communities most impacted by economic hardship and pollution.

WISH REQUESTED **\$5,000**



Faith Forward Ministries provides trauma-informed services to children and families, p. 61. Photo by Nate Smallwood.

EQUITY AND SOCIAL JUSTICE

Alliance for Refugee Youth Support and Education 60

Exceptional Adventures 60

Faith Forward Ministries 61

League of Women Voters of Greater Pittsburgh 61

Let's Get Free — the Women & Trans Prisoner Defense Committee 62

Miracle League of Western PA 62

PA Community Health Worker Collaborative 63

Pearls Serenity House 63

Southwestern Pennsylvania Partnership for Aging for Age-Friendly Greater Pittsburgh 64

The Friendship Circle of Pittsburgh, Inc. 64

The Global Switchboard 65

Alliance for Refugee Youth Support and Education



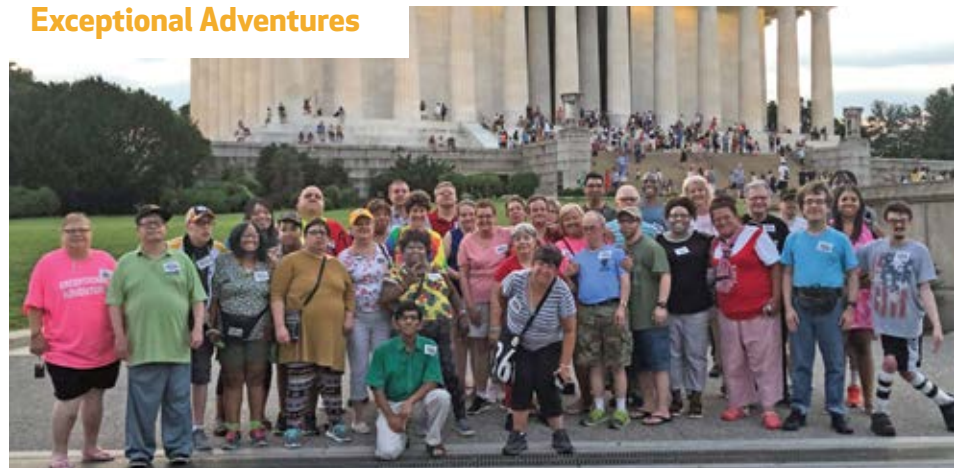
The Alliance for Refugee Youth Support and Education helps immigrant youth access the resources they need to feel confident, engaged and celebrated. Through advocacy and programming, the organization affirms youths' identities while strengthening workforce readiness and leadership skills. Funds will provide stipends for youth leaders — high school and college students with backgrounds of forced displacement — who help lead our school-year programs: Youth Steering Committee, Girls Art and Maker Group, After School Club, and Post-Secondary Support Program. These leaders create safe, culturally responsive spaces for their peers by offering academic help, language interpretation, mentoring and response to real needs. Stipends recognize youth leaders' time, skill and expertise. In a time of growing hostility and barriers to opportunity, investing in these youths' values and voices will enable them to guide the programs serving their communities and model what it means to build a more inclusive, equitable future.

PRIMARY COUNTY SERVED Allegheny

POPULATION SERVED ANNUALLY 200 immigrant and refugee youths are served each year across the Pittsburgh region.

WISH REQUESTED \$5,000

Exceptional Adventures



Exceptional Adventures provides vacation opportunities, events and social gatherings for individuals with intellectual and developmental disabilities and autism through equitable opportunities to travel, socialize and enjoy inclusive experiences. Funding will be used to enhance accessibility and safety through the purchase of branded luggage, portable wheelchair mats, a portable wheelchair ramp and a portable shower chair. Many participants rely on mobility supports, and accessibility is not always guaranteed at hotels and tourist destinations. Portable equipment will ensure all travelers can fully participate in activities with dignity and independence. Branded luggage will improve program efficiency, reduce misplaced items and promote visibility when traveling in groups. With support, Exceptional Adventures can continue to create opportunities for individuals with disabilities to explore the world regardless of needs, keep everyone safe and give travelers the confidence to make memories and friendships they will always remember.

PRIMARY COUNTY SERVED Allegheny

POPULATION SERVED ANNUALLY Exceptional Adventures served more than 300 individuals in 2024 with events, experiences and excursions.

WISH REQUESTED \$5,000

Faith Forward Ministries



Angel Arms Brighter Path, under Faith Forward Inc., provides holistic trauma-informed services to children and families, fostering resilience, growth and family stability. Angel Arms Brighter Path seeks funding to expand these services, which are focused on those affected by prenatal drug exposure, trauma and developmental challenges. Funds will support the purchase of educational and developmental materials, sensory and therapeutic equipment and nutrition supplies. It will also help Angel Arms to provide individualized counseling, family support and skill-building workshops. Funding ensures program continuity despite increased demand, cancellations or operational challenges, allowing Angel Arms to serve more children, strengthen caregivers and meet its mission of nurturing the mind, body and spirit of families in Westmoreland and Indiana counties and surrounding communities.

PRIMARY COUNTY SERVED Westmoreland

POPULATION SERVED ANNUALLY Angel Arms Brighter Path serves approximately 85 to 100 children and families annually.

WISH REQUESTED \$5,000

League of Women Voters of Greater Pittsburgh



“Empowering Voters, Defending Democracy” is the mission of the League of Women Voters of Greater Pittsburgh, a nonpartisan organization encouraging informed and active participation in government and influencing public policy through education and advocacy. An all-volunteer organization, the team is readying up-to-date information and creating graphics for handouts, online resources and video “explainers” in anticipation of midterm season 2026. The league has seen increases in costs for printing and video production. With the help of more than 100 community partners, the league distributed nearly 10,000 Ready-Set-Vote bags in 2024, plus hundreds of additional handouts, including in Spanish, to students, seniors, at-risk populations, food pantry clients, faith-based organizations and more. Funding allows the league to continue ensuring voters have accurate, current information allowing them to make their best decisions on candidates and ballot issues.

PRIMARY COUNTY SERVED Allegheny

POPULATION SERVED ANNUALLY League of Women Voters of Greater Pittsburgh’s primary audience is Allegheny County residents of voting age or soon to be of voting age (nearly 980,000).

WISH REQUESTED \$5,000

Let's Get Free — the Women & Trans Prisoner Defense Committee



Let's Get Free builds pathways out of prisons back to communities through commutation reform and support for people formerly and currently incarcerated. There are many barriers to prison visits, including geography and equity (Black and aging prisoners are 1.25 and 2.6 times less likely to be visited than those white and younger [Cochran, et al. 2017]). Let's Get Free's Operation Break Bread reduces visit barriers, covering costs such as gas, lodging and transport, and supports new and existing relationships between the incarcerated and Allegheny County visitors. Last year, the program served 115 visitors (20 new) and 80-plus incarcerated people (22 new), forging valuable bonds. The 2024 trips included reunions between four mothers and children after 18-month to nine-year gaps. This fund would coordinate virtual and in-person visits to Pennsylvania's two women's prisons — SCI-Cambridge Springs and SCI-Muncy. Seven group trips are planned in 2025, serving on both sides of the walls.

PRIMARY COUNTY SERVED Allegheny

POPULATION SERVED ANNUALLY Let's Get Free serves 250 people (150 visitors and 100 incarcerated) annually.

WISH REQUESTED \$5,000

Miracle League of Western PA



Miracle League of Western PA provides a safe and inclusive place for children and adults with physical and mental disabilities to thrive and play baseball. The organization makes sure all players, no matter their disability, feel like a Major Leaguer when they come up to bat. It announces every player before they come to bat, using the nickname of their choice (Slugger, Home Run King, the Ambassador, the Coach, Her Majesty and Sunshine, just to name a few). However, currently, the league must drag out a 10-year-old sound system with one speaker for every game. Requested funds would go toward a modern, permanent sound system to enhance the players' baseball experience. To be able to play walk-up music before every at-bat would be a thrill that Miracle League has not been able to provide.

PRIMARY COUNTY SERVED Westmoreland

POPULATION SERVED ANNUALLY Miracle League of Western PA serves about 150 players and their families.

WISH REQUESTED \$5,000

PA Community Health Worker Collaborative



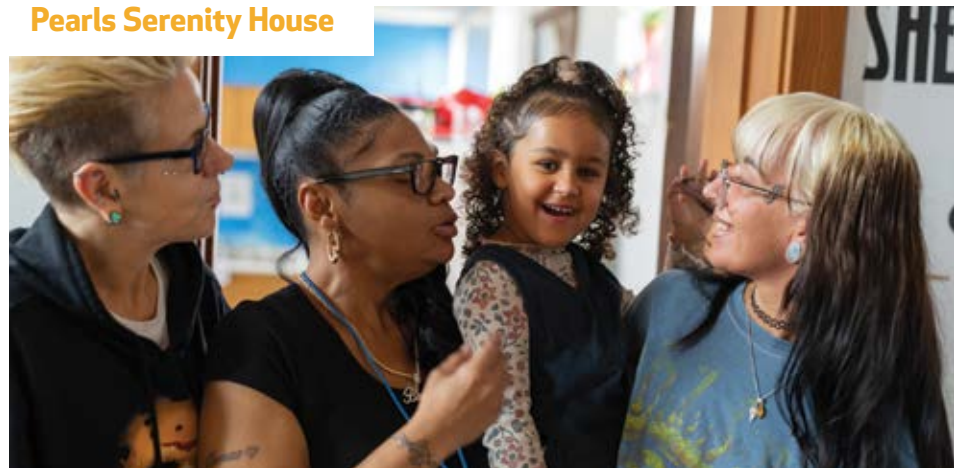
Pennsylvania Community Health Worker Collaborative unites and empowers community health workers through collaboration, education and advocacy, strengthening their professional identity to advance equity and improve community health statewide. When a mom in Homewood said she was choosing between insulin and rent, a collaborative member walked her to a clinic, secured prescription assistance and connected the family to food, transportation and housing help. During the COVID-19 pandemic, workers in Pittsburgh reached more than 30,000 people and referred over 25,000 residents to services. The collaborative will apply funds to core operations that keep community health workers hired, prepared and heard; stipends for collaborative leaders who co-facilitate the Leadership & Advocacy Academy; translation and printing of the Legislative Outreach Toolkit and Medicaid billing resources; travel for educational legislative visits and the 2025 CHW Rally Day; and essential tech and staff time to coordinate trainings and outreach.

PRIMARY COUNTY SERVED Allegheny

POPULATION SERVED ANNUALLY The collaborative serves approximately 600 individuals directly, at least 150,000 residents indirectly and about 250 clients annually.

WISH REQUESTED \$5,000

Pearls Serenity House



Pearls Serenity House was developed to provide a safe, realistic, home-like atmosphere for women in recovery. It will use requested funds to purchase new refrigerators, a microwave, a new stove, fire extinguishers, new carpeting, a new computer, and bedding and pillows, which clients always need.

PRIMARY COUNTY SERVED Allegheny

POPULATION SERVED ANNUALLY Pearl's Serenity House serves 31 people.

WISH REQUESTED \$5,000

Southwestern Pennsylvania Partnership for Aging for Age-Friendly Greater Pittsburgh



Age-Friendly Greater Pittsburgh's mission is to bring generations together to reimagine how neighborhoods are built and to advance equity through advocacy, education and innovation. Everyone should have the opportunity to grow old in an environment that is safe, healthy and thriving. Age-Friendly uplifts the voices of older residents — particularly those who live in overburdened, under-resourced communities — and promotes age inclusion across employment, transportation and more. Together with a coalition of 120-plus partners, the organization is making the Pittsburgh region, the second-oldest region in the U.S., a better place to age. Funding supports resident-led projects (e.g., group grocery trips, outdoor yoga classes for all ages) and workshops to combat ageism and innovation across the Commonwealth, recently deemed an Age-Friendly State as part of a World Health Organization and AARP Network designation.

PRIMARY COUNTY SERVED Allegheny

POPULATION SERVED ANNUALLY Age-Friendly Greater Pittsburgh works across Allegheny County and focuses on three Age-Friendly Neighborhoods of about 28,000: Beechview, McKeesport and Sharpsburg.

WISH REQUESTED \$5,000

The Friendship Circle of Pittsburgh Inc.



The Friendship Circle of Pittsburgh creates fun and innovative programs that enable youth and young adults of all abilities to be firmly connected in the community through friendships, access to wellness support and employment opportunities. Its cafe in Squirrel Hill, Bunny Bakes, provides opportunities for adults with disabilities to work in an accessible space with the necessary support to thrive and acquire skills and work experience. With funding, The Friendship Circle can create more space in the kitchen, making room for trainees and production and ultimately increasing sales/revenue. To do this, the cafe plans to move coffee and electrical stations from the back of the house to the front. That requires updated electrical equipment, shelving and a new water valve and line in the kitchen, and moving audio equipment to a new closet.

PRIMARY COUNTY SERVED Allegheny

POPULATION SERVED ANNUALLY Bunny Bakes serves about 25,000 customers annually. There are eight staff members and 16 trainees at any given time.

WISH REQUESTED \$5,000

The Global Switchboard

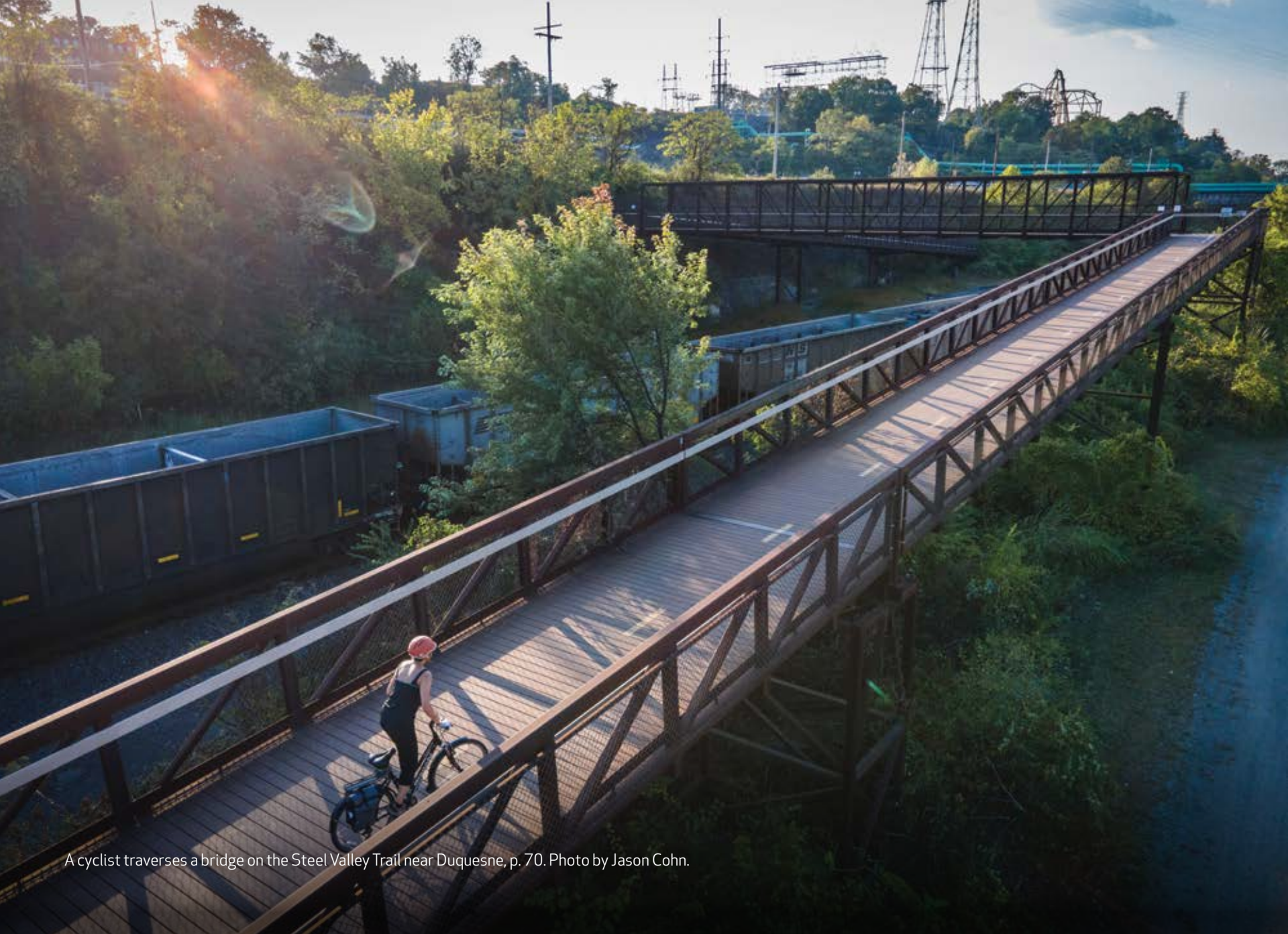


The Global Switchboard stewards a diverse network of people and organizations to promote human rights and social justice in the Pittsburgh region. Now more than ever, it is vital to strengthen the local human rights ecosystem to support immigrant rights and human rights. The Global Switchboard nurtures networks, convenes coalitions and provides fiscal sponsorship, allowing Pittsburgh-area human rights advocates to focus on their work. One example is the All for All Coalition, an immigrant inclusion initiative that supports collaborative action projects to empower local immigrant and refugee communities. All for All's Civic Engagement Subcommittee convenes immigrant-serving and advocacy organizations to share strategy, resources and campaign coordination. Through its Cross-Cultural Mental Health Roundtable, therapists connected with Casa San Jose to provide pro bono counseling to volunteer legal observers who witnessed violent immigration raids. Funds would help The Global Switchboard sustain and expand its reach with these programs.

PRIMARY COUNTY SERVED Allegheny

POPULATION SERVED ANNUALLY In 2024, The Global Switchboard had 600 program participants and 100 members of coalitions (comprising organizations and individuals).

WISH REQUESTED \$5,000



A cyclist traverses a bridge on the Steel Valley Trail near Duquesne, p. 70. Photo by Jason Cohn.

OTHER REGIONAL NEEDS

Derry Community Pool 68

Friends of Norwin Trails Inc. 68

Open Up 69

Rhodes Cancer Foundation 69

Riding for the Handicapped of Western PA 70

Steel Valley Trail Council 70

Derry Community Pool



Derry Community Pool is more than a place to swim — it's where seniors find low-impact exercise, youth learn water safety and economically disadvantaged families enjoy affordable recreation. Its graded walk-in entry, which connects the baby pool to the main pool, makes it uniquely accessible for those with mobility challenges. Yet every year, the pool faces the same challenge: Without enough lifeguards, it cannot open. In 2025, it operated at one point with just four lifeguards, forcing closures on some of the hottest days. Shortages caused as much as \$6,000 in lost revenue in 2024. Requested funding will go directly toward lifeguard salaries, allowing the pool to offer competitive wages, attract qualified staff and keep its doors open all season. With this financial support, the pool can continue to provide a safe, inclusive and welcoming gathering place, ensuring that no summer day is lost to empty chairs and closed gates.

PRIMARY COUNTY SERVED Westmoreland

POPULATION SERVED ANNUALLY Derry Community Pool serves 5,000 guests each year.

WISH REQUESTED \$5,000

Friends of Norwin Trails Inc.



Friends of Norwin Trails works to build a network of fun, safe and connected bicycling and walking trails in the Norwin community. The area is currently difficult and unsafe to get around on foot or by bike, and 67% of the community's children cannot easily walk to a park or recreation. The 100% volunteer-run organization is working with other nonprofits, businesses and local governments to address this issue. Last year, Friends of Norwin Trails completed a new hiking and mountain-biking trail in one of the local parks. Requested funding will go toward helping volunteers with trail workdays and pay for feasibility studies for larger, rail-trail-type paths. Building these trails in Norwin will help make biking and walking a part of everyday life, improving residents' physical and mental health, helping children be more independent and creating a more connected and vibrant community.

PRIMARY COUNTY SERVED Westmoreland

POPULATION SERVED ANNUALLY Friends of Norwin Trails serves the 36,605 residents of the Norwin area, which also includes North Huntingdon, Irwin and North Irwin.

WISH REQUESTED \$5,000

Open Up



Open Up teaches mindfulness tools through movement practices that center people with disabilities, while it welcomes participants to engage, heal and grow in inclusive programs. In 10 years, it has grown to include four programs that cater to the disability community, caregivers and allies. Open Spaces cultivates community awareness through outreach and amplifying lived experiences. It informs development in the youth-focused Open Schools and teen/adult-focused Open Training programs. Open Movement offers free and accessible community classes where participants can heal, connect and grow together. Funding will help Open Up restore weekly sessions that were cut due to federal funding changes. Funding ensures its diverse team — 36% identify as having a disability — can continue leading high-quality, culturally responsive sessions that community participants can fully access. Open Up can then meet growing demand, sustain the personal attention participants value and ensure continued access to safe, welcoming spaces for movement, mindfulness and healing.

PRIMARY COUNTY SERVED Allegheny

POPULATION SERVED ANNUALLY 1,594 have taken Open Movement in 2025 to date. In 2024, 2,311 Open Movement participants, 453 K-5 students, 288 adult learners and 85 affinity group classes were served.

WISH REQUESTED \$5,000

Rhodes Cancer Foundation



The Rhodes Cancer Foundation, founded and led by Corey Rhodes, who is battling stage 4 liver cancer, was established to bring comfort, hope and care to others facing cancer in their hardest moments. Every resource raised fuels research at the UPMC Liver Cancer Research Center and supports a free lunch program at the UPMC Hillman Cancer Center locations in Greensburg and Uniontown. Requested funds will go toward meals, outreach, signage and staffing, along with branded event materials, website upgrades and social media promotion to reach more patients and those who wish to become supporters. The foundation has also established a scholarship intended to inspire the next generation to be kind, compassionate and resilient like Corey. With this financial support, the foundation can grow without relying solely on grassroots fundraisers, be prepared to respond when new locations become available, and ensure that no patient has to face cancer alone.

PRIMARY COUNTY SERVED Westmoreland

POPULATION SERVED ANNUALLY Over the past year, the Rhodes Cancer Foundation has served free meals to over 550 patients and counting.

WISH REQUESTED \$5,000

Riding for the Handicapped of Western PA



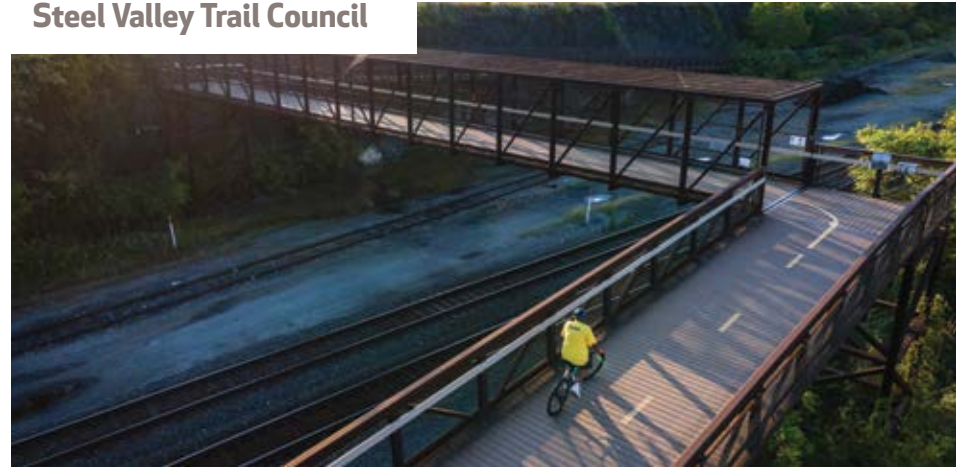
Riding for the Handicapped of Western PA enhances the physical and educational development of children with physical, mental or emotional disabilities through therapeutic horseback riding activities at no cost. Since 1979, it has been providing lessons to children with disabilities. Riding for the Handicapped has no paid personnel; it is run by a board of directors and over 200 volunteers. There is a wait list for services. Children are referred by doctors, therapists, parents and other special needs providers. Those with physical disability receive a sustainable rhythmic movement that mimics walking and can only be found with horseback riding. Riders with mental disabilities gain the physical benefits as well as the ability to build on task sequencing, following directions, and maintaining eye contact and self-control. Funding will allow three children to take weekly riding lessons from May through October.

PRIMARY COUNTY SERVED Allegheny

POPULATION SERVED ANNUALLY Riding for the Handicapped teaches weekly therapeutic horseback riding lessons from May through October to 75 to 100 children with mental and physical disabilities.

WISH REQUESTED \$5,000

Steel Valley Trail Council



Steel Valley Trail Council provides long-term stewardship of a section of the Great Allegheny Passage and offers trail amenities that enhance the experience of cyclists, walkers and bird watchers. The Steel Valley Trail lacks public restroom facilities, which detracts from the enjoyment and comfort of those who use it. To address this concern, the Trail Council currently rents three comfort stations and is requesting funds for the rental of two more comfort stations, plus one that is handicapped-accessible. These facilities are placed near the Glen Hazel (formerly Hays) eagles nest viewing area and the trail section below Kennywood's Steel Curtain roller coaster, ensuring visitors of all ages can enjoy longer, more comfortable outings.

PRIMARY COUNTY SERVED Allegheny

POPULATION SERVED ANNUALLY Each year, more than 75,000 people — from diverse backgrounds, age groups and abilities — enjoy the Steel Valley Trail.

WISH REQUESTED \$5,000



Open Up teaches mindfulness tools through movement practices that center people with disabilities, p. 69. Photo by Nate Smallwood.



Fair Shake's Brooke Christy (R) with her client, Ebony Lunsford-Evans, who is seeking to acquire the title to her Manchester Farm through the Pittsburgh Land Bank, p. 54.
Photo by Jason Cohn.

ABOUT THE FOUNDATION

Established in 1945, The Pittsburgh Foundation is one of the nation's oldest and largest community foundations.

The Community Foundation of Westmoreland County was founded in 1995. In 2015, it merged with The Pittsburgh Foundation.

Together, the resources of these community foundations comprise endowment funds established by individuals, businesses and organizations with a passion for charitable giving and fulfilling the mission of improving quality of life for all in the region. The foundations currently manage about 3,000 individual donor funds and assets of \$1.5 billion. Grantmaking benefits a broad spectrum of basic needs and development opportunities in the Pittsburgh region and beyond.

Many thanks to the entire Wish Book 2025 team, especially the 100 nonprofits whose wishes and images are published in this book. All images are used with permission. Additional nonprofit profile images are by Renee Rosensteel, Jason Cohn, Josh Franzos, Nate Smallwood and Maranie Staab. Design is by Rachel Arnold Sager of Second Block Studio. Writing and editing is by Jen Bannan, Karen Carlin, Susanna Donato and Matt Minczeski. Wish Book 2025 is organized by Taren Lumley, Matt Minczeski and Kelly Uranker. Special thanks to the Wish Book Committee. This book was printed by CDI Printing.



Schjuan Wise works on his project at a Sharing Our Story Workshop in Squirrel Hill, p. 12. Photo by Jason Cohn.



Executive Director Kim Neal (L) shows Tracy Fisher and her daughter Brie how to adjust Brie's new wheelchair at Reagan's Journey Closet in Freeport, PA, p. 34.



Abiding Missions empowers the Allentown and South Hilltop communities by meeting the daily needs of families and enriching the lives of the neighborhoods' youth, p. 44. Photo by Josh Franzos.



912 Fort Duquesne Blvd., Floor 10
Pittsburgh, PA 15222
412.391.5122
pittsburghfoundation.org
cfwestmoreland.org