



WISH BOOK 2019

CONNECTING DONORS TO UNIQUE COMMUNITY NEEDS





An aerial view of the Golden Triangle and beyond.

There is so much about our region worth celebrating and the holidays are a time when so many of us are thankful for the prosperity we enjoy. But that prosperity does not reach everyone in our community. To fulfill those needs, the region's nonprofit community is there, now more than ever, on the front lines of improving quality of life in our region. As the pages that follow demonstrate, nonprofit organizations provide an extraordinary array of vital services. The ingenuity and commitment of these organizations is inspiring, especially when so many organizations and the people they serve are increasingly challenged to do more with fewer resources.

As the region's community foundation, The Pittsburgh Foundation and its affiliate, The Community Foundation of Westmoreland County, are here to direct resources to nonprofits doing exceptional work every day. While much of our Foundation's grantmaking is at the level of long-term systems change, we recognize that it is critically important that our nonprofits have the resources they need to meet day-to-day needs.

By fulfilling one or more of these wishes, you are helping our nonprofit community meet specific and tangible needs. You are making it possible for more of our neighbors to flourish. The staff and boards of the 75 nonprofits in this year's book consider your support a dream come true.

MAKING GRANTS IS EASY

To contribute, you may contact your donor services representative or mail the enclosed recommendation form, but the fastest way to have your contribution processed is to visit **www.pittsburghfoundation.org/wishbook** and complete your transaction online or via email.

Remember that a grant to a nonprofit, no matter the size, makes a thoughtful holiday, anniversary or birthday gift.



The Roberto Clemente Bridge is mirrored in a reflection of the Allegheny River.



TABLE OF CONTENTS

Arts, Culture and Humanities	6
Community Development and Environmental Stewardship	14
Education	22
Families, Children and Youth	32
Health and Special Needs	42
Human Services	50



From 1937 to 1941, Croatian artist Maxo Vanka painted 25 murals inside St. Nicholas Croatian Catholic Church in Millvale, Pa. The organization wishes for new lighting to show the full glory of Vanka's works.

ARTS, CULTURE AND HUMANITIES

**Andrew Carnegie Free Library
& Music Hall** 8

Children's Museum of Pittsburgh 8

Manchester Craftsmen's Guild 9

The Pittsburgh Concert Chorale 9

Prime Stage Theatre 10

ProjectArt 10

Resonance Works 11

Rivers of Steel Heritage Corp. 11

**Society to Preserve the Millvale Murals
of Maxo Vanka** 12

**Soldiers & Sailors Memorial Hall
& Museum Trust** 12

Andrew Carnegie Free Library & Music Hall



Andrew Carnegie Free Library & Music Hall serves as an outstanding library, theater and historic site that welcomes, informs, entertains and engages the region in lifelong learning. Its Studio has emerged as an important alternative venue and hosts Listen Locally Downstairs, a primarily jazz series. ACFL&MH owns 55 folding chairs, but capacity for performances is 120, so it must scramble to assemble mismatched chairs from throughout the facility. ACFL&MH is requesting folding chairs primarily for Studio performances and programs.

WISH REQUESTED

- 65 steel-frame padded folding chairs @ \$2,853.

POPULATION SERVED

- Studio programs and performances are open to ACFL&MH's entire preschool through elderly constituency.

\$2,853

Children's Museum of Pittsburgh



The Children's Museum of Pittsburgh provides innovative museum experiences that inspire joy, creativity and curiosity in all children, regardless of age or ability. The museum hosts a series of mobile Early Learning programs, which can occur anywhere across its campus, limiting access to adaptive equipment that already exists in the museum. The museum is requesting adaptive equipment for each themed Early Learning day to remove barriers that can make it difficult for some children and families to participate.

WISH REQUESTED

- Eight pieces of sensory equipment including headphones and weighted vests @ \$560.
- 50 miscellaneous items including grips, handles and straps @ \$448.
- Four adaptive scissors kits @ \$235.
- Eight chair accessories including chairs with supports and lap straps @ \$1,036.

POPULATION SERVED

- The museum's youngest learners (ages birth to 5 years) who need adaptive equipment.

\$2,279

Manchester Craftsmen's Guild



Manchester Craftsmen's Guild (MCG) Youth & Arts educates and inspires youth through the arts to become productive citizens. Art students gain access to world-class resources, caring instruction, and well-equipped ceramics and photography studios. MCG Youth & Arts requests supplies to be used by students in its photography and ceramics programs. This includes a high-volume print dryer for resin-coated black-and-white and color photographs and a large-format digital monitor to showcase student ceramic work and demonstrate ceramic firing techniques.

WISH REQUESTED

- One Arkay RC-2100SS High-Speed RC Print Dryer @ \$2,295.
- One studio monitor with mounting equipment @ \$700.

POPULATION SERVED

- 400 high school-aged youth in and around Pittsburgh who may be at risk or vulnerable.

\$2,995

The Pittsburgh Concert Chorale



The Pittsburgh Concert Chorale entertains, educates, and enriches singers and audiences alike by presenting varied choral performances at the highest level of musical excellence. Each year, the Pittsburgh Concert Chorale joins high school students for "Pittsburgh Sings! Festival of Choirs" at Carnegie Music Hall in Oakland. The Pittsburgh Concert Chorale's wish is to lend new, complete Carl Orff's *Carmina Burana* scores to each participant to make each student feel special and expose them to the piece as Orff intended it.

WISH REQUESTED

- 150 *Carmina Burana* women's scores @ \$1,050.
- 80 *Carmina Burana* men's scores @ \$640.
- Two *Carmina Burana* piano/vocal scores @ \$50.
- One *Carmina Burana* piano score @ \$50.

POPULATION SERVED

- Approximately 200 students from three school districts per year, and their instructors and accompanists.

\$1,790

Prime Stage Theatre



Prime Stage Theatre works to entertain, inspire and enrich audiences through professional theatre that brings literature to life. In addition to six public performances and three student matinees, they offer educational programming both in schools and at their studio. Prime Stage Theatre's wish is to have a portable public address system and a wireless microphone for use in the studio and to allow more freedom in performances and rehearsals.

WISH REQUESTED

- Portable public address system @ \$499.
- Wireless microphone system @ \$549.

POPULATION SERVED

- Actors, teachers and students at schools and at the studio for educational programming.

\$1,048

ProjectArt



ProjectArt provides tuition-free after-school art classes to children and teens in public libraries. Resident artists teach and mentor students, helping them create, connect and thrive. They are committed to providing classes free of charge, offering kids and teens an enriching opportunity during their most impressionable hours after school. ProjectArt's wish is for aprons and for more advanced art supplies for activities for older students, such as calligraphy, screen printing and photography, to extend the learning beyond the materials they currently provide.

WISH REQUESTED

- 270 aprons @ \$270.
- Six calligraphy kits @ \$66.
- 12 digital cameras @ \$276.
- Six screen printing kits @ \$1,440.

POPULATION SERVED

- 270 children ages 4–18 from low-income areas in Pittsburgh who otherwise cannot access arts education.

\$2,052

Resonance Works



Resonance Works is an artist-driven, multi-modal performing arts company dedicated to exploring the confluence of artist, audience, music and space through performances that empower musicians and engage audiences. Resonance Works requests a set of folding professional musician's chairs, so that they can provide their artists with the standard of orchestral equipment they deserve and expand the set of venues in which they can perform.

WISH REQUESTED

- 15 Adjustrite folding musician's chairs @ \$2,835.

POPULATION SERVED

- Professional musicians of Resonance Works and its audiences.

\$2,835

Rivers of Steel Heritage Corp.



Rivers of Steel actively promotes education and heritage tourism through its attractions and tour programs, highlighting western Pennsylvania's assets to regional, national and international audiences. Rivers of Steel requests iPads that will be used to provide additional enhancements to their various tours at Carrie Furnace, including their most popular hard hat tour, and the urban art tours and photo safari tours. The iPads will be loaded with an indexed package of photos, diagrams and other aids to provide further information to guests.

WISH REQUESTED

- Three Apple iPad Pros, 64GB @ \$2,997.

POPULATION SERVED

- Thousands of visitors to the Carrie Blast Furnaces National Historic Landmark site.

\$2,997

Society to Preserve the Millvale Murals of Maxo Vanka



The Society to Preserve the Millvale Murals of Maxo Vanka conserves and protects for permanent public exhibition the Maxo Vanka murals. The murals are an inspiration for community engagement and social and cultural dialogue, a celebration of diversity and connection through reflections on the American experience. The Society requests a portable LED spotlight to replace its outdated and inadequate portable lighting system to enhance the volunteer experience and provide a cost-effective lighting solution for special events.

WISH REQUESTED

- One ColorSource portable spotlight kit @ \$2,110.
- One Matthews Maxi Kit Steel Stand with mounting adapter @ \$165.
- One 20-pound sandbag @ \$40.

POPULATION SERVED

- Approximately 4,000 visitors through docent tours, events and other activities.

\$2,315

Soldiers & Sailors Memorial Hall & Museum Trust



Soldiers & Sailors Memorial Hall & Museum preserves a lasting tribute to the men and women of Pennsylvania who unselfishly gave of themselves in serving their country during the American wars. Soldiers & Sailors Memorial Hall & Museum Trust requests Braille booklets to assist visually impaired visitors to the museum. The booklets will provide needed communication that currently does not exist between the museum and the visually impaired, creating the opportunity to listen and work with these visitors in order to understand their needs and enhance their experience.

WISH REQUESTED

- 25 reusable Braille booklets @ \$3,000.

POPULATION SERVED

- Visually impaired visitors to the museum.

\$3,000



Manchester Craftsmen's Guild (MCG) Youth & Arts Instructor Kelly Lanzendorfer encourages photographer Akriti Mishra. The program wishes for photography and ceramics supplies.



Through Tree Pittsburgh, Friends of the Pittsburgh Urban Forest enhances community vitality by restoring and protecting urban forests through tree planting and care, education and advocacy. The organization wishes for Tree Discovery Kits for area schools and libraries to inspire the next generation of urban foresters.

COMMUNITY DEVELOPMENT AND ENVIRONMENTAL STEWARDSHIP

Allegheny GoatScape 16

Brookline Teen Outreach Center 16

For Good PGH 17

**Friends of the Pittsburgh Urban Forest
d/b/a Tree Pittsburgh** 17

Grounded Strategies 18

Hilltop Urban Farm 18

Hope Haven Farm Sanctuary, Inc. 19

National Aviary in Pittsburgh, Inc. 19

PitCare 20

Pittsburgh Conservation Corps d/b/a Landforce 20

Allegheny GoatScape



Allegheny GoatScape uses goats to reduce invasive and undesirable vegetation in public spaces and vacant lots, helping partners manage landscapes so they may focus on land restoration and property use. During the winter, when food in the landscape is scarce, the three herds will go through approximately $2\frac{1}{2}$ bales of hay and six quarts of grains each day. Allegheny GoatScape is requesting hay and grain supplements to ensure that the animals will be ready to support environmental restoration projects when spring arrives.

WISH REQUESTED

- 400 bales of second-cut hay @ \$2,300.
- Six bags of timothy hay pellets @ \$96.
- 18 bags of organic goat pellets @ \$450.

POPULATION SERVED

- People of Allegheny County by improving our shared environment and supporting land stewardship efforts.

\$2,846

Brookline Teen Outreach Center



Brookline Teen Outreach Center provides resources to youth ages 10–18, including educational and social programming, tutoring, community service and licensed counseling. Its STEM and Garden Program includes a garden plot in Slippery Rock. Food grown there is brought to the center where it is used for dinner programs and life-skills cooking classes, distributed to local Meals on Wheels and food banks, or sold by students at a farmers market. Brookline Teen Outreach Center is requesting a garden shed and a refrigerator.

WISH REQUESTED

- One 7x7-foot garden shed @ \$699.
- One commercial refrigerator @ \$2,154.

POPULATION SERVED

- Youth in Brookline and the Pittsburgh area by increasing access to fresh food and counseling.

\$2,853

For Good PGH



For Good PGH's initiatives promote diversity and inclusivity and create positive experiences for under-served populations in the region. In spring 2019, it initiated a program developed from the Greater Woodland Hills Gun Violence Prevention Coalition that provides police departments with small toys and food items to provide to children while on patrol to build positive community relations. For Good PGH is requesting to purchase those items and also refreshments for the Coalition's monthly meetings to encourage continued participation and collaboration.

WISH REQUESTED

- 1,000 small toys, activities and snacks @ \$2,500.
- 10 food and drink packages for monthly Coalition meetings @ \$500.

POPULATION SERVED

- Youth in Braddock, North Braddock, East Pittsburgh, Swissvale, Rankin and other Mon Valley communities.

\$3,000

Friends of the Pittsburgh Urban Forest d/b/a Tree Pittsburgh



Tree Pittsburgh restores and protects the urban forest through tree maintenance, planting, education and advocacy. Its Tree Discovery Kits educate elementary- and middle school-age children through investigation of urban and community trees. The kits include books on species and care, a guide to Pennsylvania trees, projects, specimens, seeds for native trees and tools. Tree Pittsburgh is requesting Tree Discovery Kits to distribute to public libraries and schools in Allegheny County to inspire the next generation of environmental advocates.

WISH REQUESTED

- 20 plastic totes @ \$500.
- 20 book bundles @ \$1,000.
- 20 specimen bundles @ \$1,100.
- 20 exploring tools (tweezers, magnifying glass) @ \$400.

POPULATION SERVED

- Children in grades K–8 across Allegheny County.

\$3,000

Grounded Strategies



Grounded Strategies seeks to improve the social, economic and environmental health of distressed communities by building the capacity of residents to reclaim vacant and underutilized land. Its PGH Mobile Toolbox lends hand tools, equipment and landscaping materials to resident organizations free of charge. The organization seeks to buy heavy-duty landscaping tools that trained staff will use to cut back overgrown lots, build community gardens, install fences, and make gathering and play spaces safe and accessible.

WISH REQUESTED

- One solar power generator @ \$700.
- One wood chipper @ \$500.
- One auger @ \$260.
- One band saw @ \$300.

POPULATION SERVED

- PGH Mobile Toolbox volunteers and the communities they serve.

\$1,760

Hilltop Urban Farm



Hilltop Urban Farm is a community-centered farm providing local crops, agriculture education and entrepreneurial opportunities. It strengthens communities through its youth farm, farmer incubation program and orchard. The farm requests items for its nutrition and cooking demonstrations, wheelbarrows for use at its youth farm, and a rain harvesting system to offset water needs for 150+ fruit and nut trees. The harvest system installation will include high school youth from the New Academy Charter High School in Arlington.

WISH REQUESTED

- Four Craftsman 6-cubic-foot poly wheelbarrows @ \$360.
- One full Kit & Kaboodle Curious Chef Bundle @ \$100.
- One 3-piece stainless steel mesh perforated strainer colander set @ \$25.
- One rain water harvesting system (off of shipping container) @ \$2,500.

POPULATION SERVED

- 450+ Hilltop youth ages 3-19 who attend Pittsburgh Arlington public, religious and charter schools.

\$2,985

Hope Haven Farm Sanctuary, Inc.



Hope Haven is Pittsburgh's only no-kill farm sanctuary and provides an engaging learning environment for the public. Due to lack of pet-owner education and unrealistic expectations, the animals that are currently in the most critical need of rescuing are unwanted pot-bellied pigs. Hope Haven seeks to create a new pot-bellied pig paddock, where visitors will have hands-on time with these intelligent and curious creatures and learn what is involved in keeping them as pets.

WISH REQUESTED

- 30 8-foot hog panel fencing @ \$450.
- 60 5-foot T-posts @ \$270.
- One wooden shed/living quarters @ \$2,000.
- Assorted buckets, troughs and vaccines @ \$200.

POPULATION SERVED

- Each year, Hope Haven welcomes 200–300 visitors on farm tours and events.

\$2,920

National Aviary in Pittsburgh, Inc.



The National Aviary inspires respect for nature through an appreciation of birds. Its veterinary department requests special medical equipment for treating its avian residents. Endoscopy is a safe and effective way to biopsy samples and make specific diagnoses, allowing for more effective treatment with fewer complications than from standard surgery. Also requested is a microscope camera to improve diagnostic capabilities. Equipment will also benefit veterinary interns studying at the National Aviary.

WISH REQUESTED

- One set of endoscopy graspers to allow for surgery without incisions @ \$1,500.
- One microscope camera to improve diagnosis and teach interns @ \$1,500.

POPULATION SERVED

- The National Aviary is home to 500+ birds and serves 200,000 people annually.

\$3,000

PitCare



PitCare works to empower families, rebuild community and promote economic stability in Pitcairn, Pa., through active community engagement. PitCare is requesting a Mobile STEAM Station Board Easel as well as a mobile instructors desk with storage to help them make the instruction visible to all of the students and provide a space for the necessary curriculum materials to be stored.

WISH REQUESTED

- Mobile STEAM Station Board Easel @ \$930.
- Mobile instructors desk @ \$1,464.

POPULATION SERVED

- Elementary through high school students in PitCare's STEM and STEAM library programs.

\$2,394

Pittsburgh Conservation Corps d/b/a Landforce



The Pittsburgh Conservation Corps d/b/a Landforce hires chronically underemployed and unemployed people confronting poverty. They train their employees to work on environmental stewardship projects while supporting their transition to full-time family-sustaining employment. Landforce's wish is to furnish two coaching rooms so that their individualized coaching sessions with crew members can move inside to a more private, therapeutic space.

WISH REQUESTED

- Two indoor "Zen" water fountains @ \$500.
- Four armchairs @ \$1,200.
- Two tables (end + coffee/work) @ \$1,100.
- Two sets of throw pillows and blankets @ \$200.

POPULATION SERVED

- Pittsburghers striving to overcome their barriers to employment while working to improve the environment we all share.

\$3,000



Pittsburgh's only no-kill farm sanctuary, Hope Haven, wishes for new paddocks so that visitors may have more hands-on educational time with the animals.



Caitlin Griffiths, left, and Hakima Ait Lafkih supervise snack time at Literacy Pittsburgh, which wishes for creative corner supplies to help immigrant and refugee children and their mothers learn to read.

EDUCATION

- Bidwell Training Center** 24
- Central Catholic High School** 24
- Community Library Association** 25
- Crossroads Foundation** 25
- DePaul School for Hearing and Speech** 26
- Elizabeth Seton Center, Inc.** 26
- Friends of the Whitehall Public Library** 27
- Imani Christian Academy** 27
- Literacy Pittsburgh** 28
- Millvale Community Library** 28
- Northland Public Library Authority** 29
- Reading Is FUNdamental Pittsburgh** 29
- Woodland Hills Foundation** 30

Bidwell Training Center



Bidwell Training Center (BTC) provides career training and academic enrichment free of charge to adults in Pennsylvania who are unemployed, underemployed or in transition. BTC is requesting Dave Ramsey's Financial Peace University video lessons for its career training curriculum. These lessons will allow BTC to teach students how to be efficient with their finances, providing a stronger foundation for success. Equipping students with these tools anticipates a change in income for the underemployed individuals served by BTC's programs.

WISH REQUESTED

- 50 Ramsey Solutions Financial Peace University video lessons @ \$2,950.

POPULATION SERVED

- Each year, BTC enrolls approximately 140 students in its seven career training programs.

\$2,950

Central Catholic High School



Central Catholic High School provides college-preparatory education to young men from diverse socioeconomic backgrounds in a community that fosters lives of integrity, respect, service, justice and peace. To help with needs beyond tuition and to remove barriers to learning, Central Catholic intends to establish a personal care and supply pantry for disadvantaged students and also address the need for meals. Central Catholic High School is requesting backpacks with school supplies, personal care kits and pantry kits.

WISH REQUESTED

- 21 backpacks with school supplies @ \$1,260.
- 30 personal care kits @ \$540.
- 40 pantry kits with meal passes @ \$1,200.

POPULATION SERVED

- Although 12% of students are eligible for the free/reduced lunch program, the pantry is open to any student.

\$3,000

Community Library Association



Community Library Association works to cultivate a community of lifelong learners. The Association wishes to assist in the Spanish immersion program for first-grade students in the Fox Chapel Area School District launched by Kerr Elementary, the neighborhood school for Sharpsburg and parts of O'Hara. Each year, an additional grade will be added. Community Library Association is requesting to develop a bilingual children's collection at the Sharpsburg Community Library, with Spanish language materials and bilingual English/Spanish books.

WISH REQUESTED

- 50 picture books @ \$750.
- 25 chapter books and graphic novels @ \$375.
- 25 nonfiction books @ \$375.

POPULATION SERVED

- Students in Kerr Elementary's Spanish immersion program.

\$1,500

Crossroads Foundation



Crossroads Foundation addresses educational inequity experienced by students from low-income households by providing access to opportunities in academics, college and career exploration and preparation, and social wellness. Its Parent Leadership & Advisory Council helps parents and guardians at Crossroads be more involved in every scholar's needs, offering assistance on program priorities, identifying community needs and communicating ideas. The Crossroads Foundation is requesting funding toward emergency meals, club and athletics fees, transportation and uniforms for its families.

WISH REQUESTED

- Emergency meal support @ \$750.
- Fees for club and athletic opportunities @ \$500.
- Transportation to activities and to Crossroads @ \$750.
- Uniforms @ \$1,000.

POPULATION SERVED

- The 140 students served annually by the Crossroads program and their families.

\$3,000

DePaul School for Hearing and Speech



DePaul School for Hearing and Speech teaches children who are deaf to listen and talk, in preparation to independently enter the hearing and speaking world and the mainstream of education. DePaul School for Hearing and Speech is requesting Chromebooks for upper-level students to improve their typing skills, utilize online learning opportunities, learn the basics of researching and data-mining, and develop a level of confidence in using the devices that are most commonly used in public schools.

WISH REQUESTED

- 11 Chromebooks @ \$2,750.
- 11 carrying cases @ \$220.

POPULATION SERVED

- DePaul School for Hearing and Speech students ages 9–15 and their families.

\$2,970

Elizabeth Seton Center, Inc.



Elizabeth Seton Center, Inc. offers intergenerational lifelong learning where people can learn, change and grow in body, mind and spirit. STEM skills are important for children to learn, but teaching tools are expensive. Elizabeth Seton Center is requesting such tools so that the children it serves can engage with STEM concepts through play while toddlers and preschoolers can learn from multisensory experiences and school-age students can interact while building complex structures. Seniors can also engage with children using STEM tools.

WISH REQUESTED

- Four STEM LED light box tables @ \$1,200.
- Four STEM LED light box accessory sets @ \$160.
- One Ozobot Evo Classroom Kit (12 Bots) @ \$1,320.
- Eight K'NEX STEM exploration kits @ \$320.

POPULATION SERVED

- Infants/toddlers (6 weeks to 2 years), and preschool and school-age (through 12 years) children.

\$3,000

Friends of the Whitehall Public Library



The Public Library is a community resource for education, exploration, enrichment and enjoyment. The Library seeks to add five more hot spot devices, which provide portable internet access. Hot spots help people of all ages and cultures access the internet from anywhere for job searches, homework, and applying for benefits or citizenship. Hot spots also help those who cannot get to the library to gain access to the internet.

WISH REQUESTED

- Seven hot spot devices @ \$84.
- Seven hot spot service plans @ \$840.
- Seven hot spot protective cases @ \$140.

POPULATION SERVED

- Under-served populations and those facing economic hardship and barriers to library access.

\$1,064

Imani Christian Academy



Imani Christian Academy embraces children and transforms them spiritually, academically, physically and socially to pursue lives of purpose and contribution. Most children who attend Imani Christian Academy have seen others in their community swallowed up by a persistent cycle of poverty. Families make great financial sacrifices to have their children attend Imani, and the school provides most supplies, but every student must wear a uniform shirt, black pants, shoes and a belt. The academy requests uniform shirts for its most financially strapped families.

WISH REQUESTED

- 150 uniform polo shirts @ \$3,000.

POPULATION SERVED

- Low-income families with children in grades K-12 at Imani Christian Academy.

\$3,000

Literacy Pittsburgh



Literacy Pittsburgh's family literacy program has been operating in the South Hills for more than a decade and recently prioritized immigrant and refugee families. The single best predictor of a child's long-term academic performance is the mother's literacy level. Literacy Pittsburgh teaches parents and children together to build skills in reading, fluency, retention and comprehension. The nonprofit requests support for a creative corner to enrich student learning and incorporate lessons in art, music, creative play, and enhanced analytical and reasoning skills.

WISH REQUESTED

- 12 plastic stackable children's school chairs @ \$148.
- Assorted creative classroom supplies, including easels, play costumes, musical instruments, a dollhouse and dolls @ \$1,220.
- 20 sets of Montessori Learning Tools @ \$300.
- 100 assorted children's books @ \$500.

POPULATION SERVED

- Refugee families from countries such as Bhutan, Burundi, Iraq, Nepal, Somalia, Sudan and Syria.

\$2,168

Millvale Community Library



Millvale Community Library is more than a library. It is an agent of positive change and a true community center. The library had one of the first makerspaces in Allegheny County, and provides grades 6–8 STEAM (science, technology, engineering, arts and math) education programs weekly. The library requests items for teaching stop motion animation and editing techniques, and other STEAM education program activities for children in the library's makerspace.

WISH REQUESTED

- Four iPad Air tablets @ \$1,880.
- One desktop PC @ \$350.

POPULATION SERVED

- Youth in the Shaler Area School District and in Reserve Township, Millvale, Etna and Shaler.

\$2,230

Northland Public Library Authority



Northland Public Library enables, encourages and empowers lifelong learning and discovery. Frequent library users include senior, youth and special needs populations. The library requests a hearing loop audio system to benefit patrons who have hearing loss. The loops amplify the voices of library staff and deliver them to a patron's hearing aid. The library also seeks improved Wi-Fi and hot spot access and smart TVs to give presenters at the library access to current presentation technology.

WISH REQUESTED

- One hearing loop system @ \$840.
- Two mobile hot spots @ \$960.
- Three smart LED televisions @ \$1,059.

POPULATION SERVED

- Patrons with hearing impairment, all patrons who use internet access, and presentation attendees.

\$2,859

Reading Is FUNdamental Pittsburgh



The mission of Reading Is FUNdamental (RIF) Pittsburgh is to provide children with the resources, motivation and opportunities to develop a lifelong love of reading. RIF requests brand-new furniture and books for five early childhood sites in neighborhoods of need. These nooks, using the furniture and books requested, will add resources to early childhood classrooms, encourage children to read, and serve as an example to families of how to make inviting reading spaces for young learners at home.

WISH REQUESTED

- Five educational learning area rugs @ \$275.
- Five hardwood bookcases with 50 children's books @ \$1,975.
- 10 beanbag chairs @ \$500.
- Five felt board sets with storytelling figures @ \$250.

POPULATION SERVED

- Children learning how to read at five Storymobile partner sites.

\$3,000

Woodland Hills Foundation



The Woodland Hills Foundation supports the Woodland Hills School District and its communities by strengthening the educational experience of the children. The Woodland Hills Foundation requests flexible seating that will provide an outlet for students' need to move while stimulating sensory input — all in a structured classroom environment. By providing alternative seating, educators can engage students where they learn best: where they are comfortable and, thus, more productive.

WISH REQUESTED

- 62 Bouncyband Student Edition for Elementary School Chairs @ \$868.
- 18 Safco Zenenergy ball chairs @ \$2,070.

POPULATION SERVED

- Students enrolled at Wilkins Primary School in Pre-K to grade five.



Hugo Gutowski is absorbed in a book provided by the Community Library Association's Spanish immersion program. The association wishes for more bilingual books for the Sharpsburg Community Library.



Gregory Freeman is among the dozens of people who enjoy a meal each Friday at the Diakonia Ministries Inc. Master's Kitchen. Diakonia Ministries wishes for a new refrigerator to store supplies so it can feed more people.

FAMILIES, CHILDREN AND YOUTH

Angels' Place, Inc. 34

Cameroon FDP d/b/a Open Field 34

Casa San Jose 35

**Diakonia Ministries, Inc. d/b/a Bethany
Community Ministries** 35

Family Guidance, Inc. 36

Girl Scouts Western Pennsylvania 36

Jeremiah's Place 37

Naomi's House 37

Pine Valley Bible Conference d/b/a Pine Valley Camp 38

Pittsburgh Three Rivers Marathon, Inc. 38

Propel Schools Foundation 39

Trying Together 39

When She Thrives 40

Angels' Place, Inc.



Angels' Place, Inc. provides family support and early childhood education to help parents in need and their children create a brighter future. Expansion of services at its North Side center and recent flooding at the Swissvale center have created a need for items essential to supporting families enrolled at Angels' Place. Angels' Place is requesting mealtime and sanitation supplies to help create a healthy and sustainable environment where children can learn and grow.

WISH REQUESTED

- Two DeWalt wet/dry vacs @ \$300.
- Two Shark vacuum cleaners @ \$229.
- Eight shatterproof plate sets @ \$1,560.
- 13 shatterproof children's glass sets @ \$910.

POPULATION SERVED

- Single parents raising children ranging in age from birth to 5 years throughout Allegheny County.

\$2,999

Cameroon FDP d/b/a Open Field



Open Field seeks to improve the lives and futures of youth through its core values: Be a team player, challenge yourself, respect others, play fair, be a role model and elevate your community. With the help of a clinical therapist, its after-school programs help youth process emotions and experiences to come to a better understanding of themselves and their peers from other cultures. Open Field is asking for athletic hijabs, sensory boxes, journals and signage that promotes its core values.

WISH REQUESTED

- 30 athletic hijabs for girls @ \$1,050.
- Four sensory boxes to support clinical therapy @ \$340.
- 250 journals for youth @ \$750.
- Signage promoting core values @ \$200.

POPULATION SERVED

- Low-income youth, primarily girls, ages 5-18 from Syrian, Congolese, Somali, Bhutanese and African American families.

\$2,340

Casa San Jose



Casa San Jose is a community resource center that advocates for and empowers Latino immigrants by promoting integration and self-sufficiency, providing access to services to better acclimate them to their new home and helping them feel welcome. Casa San Jose is asking for Amazon gift cards to reward high school graduates and older teens for achievement, and Walmart and Aldi gift cards for recently arrived immigrants, particularly in winter, to buy emergency items such as warm clothing and food.

WISH REQUESTED

- 10 \$25 Amazon gift cards @ \$250.
- 25 \$25 Aldi gift cards @ \$625.
- 25 \$25 Walmart gift cards @ \$625.
- 25 personal toiletries, soap, shampoo and diapers @ \$625.

POPULATION SERVED

- Those released from ICE detention, recently arrived Latino immigrants, and older teens with limited education.

\$2,125

Diakonia Ministries, Inc. d/b/a Bethany Community Ministries



Diakonia Ministries, Inc. provides hope to the Homewood community through human services, youth ministry, counseling and education. The Master's Kitchen serves 80–100 meals every Friday, and the Summer Youth Camp also serves as an Allegheny County feeding site. Refrigerator space is shared with other ministries and staff members, making it difficult to store Camp food and Master's Kitchen supplies during the summer. Diakonia Ministries is requesting a refrigerator to accommodate the program's growth and eliminate the need for off-site food storage.

WISH REQUESTED

- One commercial refrigerator @ \$915.
- One delivery fee @ \$250.

POPULATION SERVED

- Children, youth, seniors, the homeless and the general public, free of charge.

\$1,165

Family Guidance, Inc.



Family Guidance, Inc. (FGi) brings hope and a future through Jesus Christ to vulnerable youth in the Pittsburgh region through mentoring and residential camping experiences. Promise Camp, in Clinton, Pa., ministers to the needs of children from disadvantaged backgrounds. The cost to provide one child with a one-week stay is \$600, but FGi charges families only a \$25 registration fee. FGi is requesting camping items for those attending Promise Camp in 2020, allowing families to conserve financial resources for other needs.

WISH REQUESTED

- 20 sleeping bags @ \$800.
- 375 blankets @ \$1,500.
- 100 flashlights @ \$700.

POPULATION SERVED

- Children ages 6–17 from vulnerable neighborhoods and sometimes challenging home situations who attend Promise Camp.

\$3,000

Girl Scouts Western Pennsylvania



Girl Scouts Western Pennsylvania (GSWPA) builds girls of courage, confidence and character who make the world a better place. Through events such as the race car design challenge and derby, Girl Scouts learn to build community and acquire valuable STEM skills. Race car event participants bond through friendly competition, achieve greater understanding of engineering and physics through building a race car, and show their personal flair. GSWPA seeks race track, timers and other equipment to hold a council-wide race.

WISH REQUESTED

- One six-lane, 42-ft. derby race track @ \$1,759.
- One six-lane timer @ \$810.
- One lift & leveling kit @ \$170.

POPULATION SERVED

- Girl Scouts participating in GSWPA's Girl Scout Leadership Experience.

\$2,739

Jeremiah's Place



Jeremiah's Place serves as Pittsburgh's only crisis nursery, providing 24-hour emergency child care for families experiencing a crisis. Since opening in 2014, Jeremiah's Place has worked tirelessly to provide an inviting and fun environment for the children who visit the center. Much of the original equipment and materials donated when the center opened have worn down from constant use. Jeremiah's Place requests new reading, play and naptime equipment to provide an inviting and engaging space for the children it serves.

WISH REQUESTED

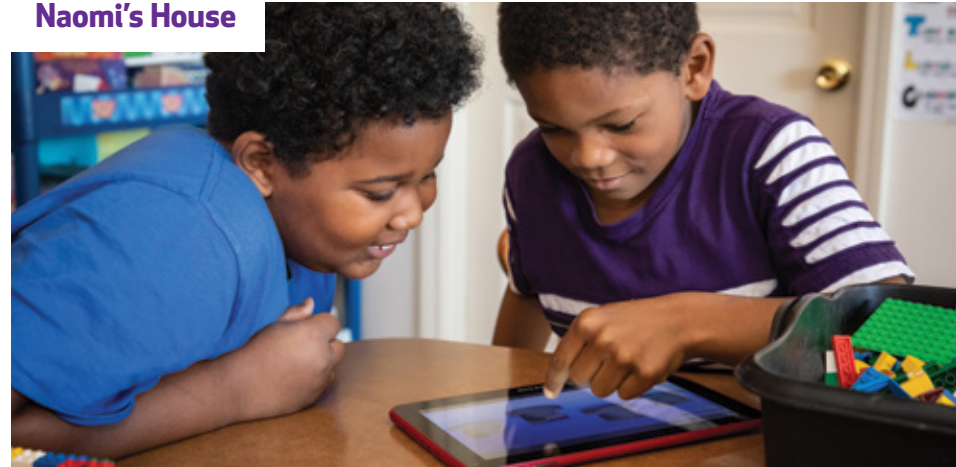
- One play kitchen with toys and rug @ \$1,183.
- Naptime mats and storage shelf @ \$1,059.
- Reading corner chair and rug @ \$721.

POPULATION SERVED

- More than 200 children ages birth to 6 years annually, many from special needs and/or single-parent households.

\$2,963

Naomi's House



Naomi's House provides early intervention and behavioral health prevention services that promote and support the development of wellness in individuals, families and communities. Its after-school program serves low-income students ages 7–14 from the Woodland Hills School District, which uses the Schoology website for homework assignments. Because many students do not have access to home computers, Naomi's House requests funding for tablets and internet service to share assignments and progress with after-school program students and their parents.

WISH REQUESTED

- Four Amazon Fire HD 8 Kids Edition tablets @ \$516.
- Four Samsung Galaxy 8.0 tablets @ \$916.
- Four Amazon Fire 7 Kids Edition tablets @ \$436.
- One year of internet access @ \$1,068.

POPULATION SERVED

- Low-income children ages 7–14 who are struggling with school work and behavioral challenges and their families.

\$2,936

Pine Valley Bible Conference d/b/a Pine Valley Camp



Pine Valley Camp rebuilds the lives of inner-city and underprivileged children from the Pittsburgh area primarily through its summer camp program. Its meals address food insecurity, and fun activities build trusting relationships that make it possible to teach life skills and share the gospel message. Pine Valley Camp seeks a new freezer to make sure that food needs are met, a new canoe to replace those that are wearing out, and more bikes for campers.

WISH REQUESTED

- One 20-cubic-foot frost-free upright freezer @ \$689.
- One Old Town Saranac 160 canoe @ \$848.
- Four Schwinn Fremont hybrid bikes @ \$1,272.

POPULATION SERVED

- 750 campers ages 6–15 each summer and 75 per month Oct. to April.

\$2,809

Pittsburgh Three Rivers Marathon, Inc.



Pittsburgh Three Rivers Marathon (P3R) works to make sure that after a season of training — creating new bonds as a team, learning to take disciplined steps toward reaching big goals, and taking action to improve their health and wellness — no child misses race day: the ultimate celebration of hard work and an official welcome into the Pittsburgh running community! P3R's wish is to provide quality running shoes to 75 children who will care for their shoes as a point of pride, just like a “real runner.”

WISH REQUESTED

- 75 pairs of children's running shoes @ \$2,275.

POPULATION SERVED

- Approximately 10,000 children in 150 sites throughout the Pittsburgh region.

\$2,275

Propel Schools Foundation



Propel Schools Foundation promotes high-quality public education and extends its wellness support to community members. After the leaders of Propel's Community Wellness Center received repeated requests, Propel Schools Foundation's wish is to provide personal care and cleaning kits for community members who are unable to purchase these items with their limited financial means. They also request a pingpong table as a comfortable, fun and ongoing method for Center and school leaders to engage with the community.

WISH REQUESTED

- Portable pingpong table @ \$400.
- 75 personal care kits — female @ \$1,497.
- 76 personal care kits — male @ \$883.
- Nine household cleaning kits @ \$214.

POPULATION SERVED

- Low-income families living in North Side communities or surrounding areas.

\$2,993

Trying Together



Trying Together supports high-quality care and education for young children by providing resources and growth opportunities for children and those who interact with them. Using children's books and learning materials, they empower families and caregivers to develop a habit of reading with children daily to enrich the home environment and help children develop a love of learning. Trying Together requests new children's books, family-style meals and learning materials to establish a Raising Readers club in Duquesne.

WISH REQUESTED

- 30 high-quality children's books @ \$750.
- Three family-style meals for participating families @ \$600.
- Reading program learning materials @ \$1,300.

POPULATION SERVED

- Low-income families with young children residing in the city of Duquesne.

\$2,500.00

When She Thrives



When She Thrives equips single mothers to move their families from poverty to prosperity. Included in the launching of its new program, SOAR, is the Single Mom Supper Club, which will reinforce the importance of having dinner as a family and create a cooperative network for single mothers. When She Thrives requests tables and chairs to accommodate the families it serves through the supper club so they don't have to turn families away due to lack of space.

WISH REQUESTED

- Six 72-inch round folding tables @ \$1,650.
- 54 folding chairs @ \$1,350.

POPULATION SERVED

- African American single mothers and their children in Allegheny County.

\$3,000



Canoe rides put huge smiles on the faces of Pine Valley campers Silas and Matthias Reichart. Pine Valley wishes for a new canoe and other supplies to offer the experience to more campers.



Laura P. Black holds her newborn son, Brooks, at their home. The family receives services from VNA of Western Pennsylvania. VNA wishes for a BiliChek monitor to conduct noninvasive home-based testing of infants for elevated bilirubin levels, which can cause brain damage if not treated.

HEALTH AND SPECIAL NEEDS

Cancer Caring Center 44

Children's Home of Pittsburgh 44

Face2Face Healing 45

Operation Strong Mind 45

Our Clubhouse Allegheny County 46

**POWER (Pennsylvania Organization for
Women in Early Recovery)** 46

Reagan's Journey 47

The Arc of Butler County 47

The Bradley Center 48

The Leukemia & Lymphoma Society 48

VNA, Western Pennsylvania 49

**Western Pennsylvania Chapter of the
National Hemophilia Foundation** 49

Cancer Caring Center



Cancer Caring Center helps cancer patients and their families with free supportive services, including Ensure liquid nutrition, which provides nutrients for patients who suffer from appetite loss or nausea because of treatment side effects. Ensure is expensive, and financial hardship keeps some clients from buying it despite doctor recommendations. Cancer Caring Center is the only cancer agency (including hospitals) that offers one case monthly to financially challenged patients in the area. Cancer Caring Center is requesting 120 cases of Ensure.

WISH REQUESTED

- 120 cases (24 cans each) of Ensure liquid nutrition @ \$3,000.

POPULATION SERVED

- Cancer patients facing financial hardship.

\$3,000

Children's Home of Pittsburgh



Children's Home of Pittsburgh promotes the health and well-being of infants and children. Its Pediatric Specialty Hospital cares for medically fragile infants who need human milk to become healthy and grow. Unlike formula, human milk is easier to digest, is more nutrient-rich and prevents dangerous conditions. Despite being the simplest and most important medicine fragile babies can receive, sometimes a mother's own milk is unavailable. Children's Home of Pittsburgh is requesting to buy donor milk from the Mid-Atlantic Mothers' Milk Bank.

WISH REQUESTED

- 210 100-ml bottles of human donor milk @ \$2,940.

POPULATION SERVED

- Medically fragile infants and mothers whose own milk is unavailable.

\$2,940

Face2Face Healing



Face2Face Healing builds support through a community of individuals with disfigurement to promote healing through outreach, advocacy, interaction, activity, resources and education. Face2Face Healing patients commonly cannot communicate through talking; some are hearing and sight impaired, and others lack motor skills. Touch technology would help them communicate. Although the cost of devices has decreased, in many cases people with disabilities still cannot afford them. Face2Face Healing is requesting iPads for patients and clients who are unable to afford such technology and hardware.

WISH REQUESTED

- 9 iPads, basic model @ \$2,961.

POPULATION SERVED

- People dealing with facial and bodily disfigurement who are unable to communicate through voice.

\$2,961

Operation Strong Mind



Operation Strong Mind maximizes the potential and resilience of military community members by connecting military and civilian communities through education advocacy and meaningful and interpersonal engagement. Operation Strong Mind requests funding for a local National Guard or Reserve Family Day event, which is required by the military but not funded. The organization also requests supplies for the Guard and Reserve during unit training tests, and funding for gift cards for supplies for military families.

WISH REQUESTED

- 75 gift cards for military families @ \$1,500.
- 120 meals and refreshments for Family Day @ \$1,200.
- 16 cases of 12-ounce Gatorade for unit training tests @ \$176.
- Five cases of fitness bars for unit training tests @ \$120.

POPULATION SERVED

- Members of the military community in southwestern Pennsylvania.

\$2,996

Our Clubhouse Allegheny County



Our Clubhouse provides children affected by cancer — either through their own or a loved one's diagnosis — with comprehensive psychosocial support at local pediatric oncology floors and at its Strip District location. Our Clubhouse requests tools to teach positive coping skills using art, play and other modalities to children and teens. These include upgrades to MediKin dolls that are used to ease children's anxieties about cancer and treatment, iPads with medical teaching apps, and supplies for therapeutic play interventions.

WISH REQUESTED

- One neuro-oncology adapter for the MediKin educational medical doll @ \$625.
- One lymphoma adapter for the MediKin educational medical doll @ \$365.
- Two iPads with medical teaching apps for pediatric oncology floor visits @ \$1,200.
- 125 therapeutic play masks and feelings strongboxes @ \$275.

POPULATION SERVED

- Children and families affected by cancer in Allegheny County.

\$2,465

POWER (Pennsylvania Organization for Women in Early Recovery)



POWER helps women reclaim their lives from the disease of addiction to alcohol and other drugs, and reduce the incidence of addiction in future generations. Their goal is to help those in the treatment facility re-learn to take care of their whole person, their health and wellness having been pushed aside. POWER's wish is to have bikes that will allow the women to participate in more health and wellness activities and to use for transportation to recovery activities.

WISH REQUESTED

- Five women's hybrid commuter bikes @ \$1,200.

POPULATION SERVED

- Women in early recovery who stay at the POWER House licensed treatment facility.

\$1,200

Reagan's Journey



Reagan's Journey works to make life better for children with special needs through annual family events and Lending Closet(s) for durable medical equipment. Reagan's Journey requests an iPad Pro with Wi-Fi, a stand and a case to make registering families more efficient, all while tracking and recording information for its database. The iPad will also allow them to keep accurate inventory, take pictures and post items that are available for families to borrow from the Lending Closet.

WISH REQUESTED

- iPad Pro 11 with Wi-Fi @ \$949.
- iPad Pro stand @ \$35.
- iPad screen protector @ \$30.
- iPad case @ \$60.

POPULATION SERVED

- Families affected by disabilities who are served through the Lending Closet(s).

\$1,074

The Arc of Butler County



The Arc of Butler County provides advocacy, education, support and service to individuals with intellectual and developmental disabilities and their families. The Arc of Butler County is requesting three new iPads, providing each student of AERO (Activities, Employment, and Recreational Opportunities), an after-school program offered by The Arc of Butler County, the opportunity to access technology that provides assistive and interactive tools that are crucial to their success.

WISH REQUESTED

- Three iPad Pros @ \$2,397.

POPULATION SERVED

- High school students who have intellectual and developmental disabilities in AERO's after-school program.

\$2,397

The Bradley Center



The Bradley Center is committed to improving the lives of children, youth and families affected by trauma, mental illness and behavioral health challenges. The children receive music therapy to promote healing; reduce symptoms of anxiety and depression; and improve self-expression, communication, mindfulness, and social, interpersonal, listening and problem-solving skills. The Bradley Center requests instruments that the children have yet to experience, enhancing the music therapy program and the children's healing process.

WISH REQUESTED

- 15 djembe drums @ \$900.
- Three electric guitars with amps @ \$900.
- Five acoustic guitars @ \$800.
- 10 ukuleles @ \$400.

POPULATION SERVED

- The approximately 250 children served annually through the residential treatment facility and school.

\$3,000

The Leukemia & Lymphoma Society



The Leukemia & Lymphoma Society works to cure leukemia, lymphoma, Hodgkin's disease and myeloma, and improve the quality of life of patients and their families. The Leukemia & Lymphoma Society requests 50 pediatric blood cancer patient medicine kits, which would contain everything parents need to administer their child's medication correctly and effectively. The kits will help parents manage life with a child who is battling cancer — and help ensure that their child gets the best treatment possible.

WISH REQUESTED

- 50 pediatric blood cancer patient medicine kits, including insulated bag, stick-on thermometer, ice pack, pill grinder and pill splitter @ \$2,150.

POPULATION SERVED

- Children with leukemia, lymphoma or other blood cancers living in Allegheny and surrounding counties.

\$2,150

VNA, Western Pennsylvania



The VNA of Western Pennsylvania Lutheran SeniorLife provides care to newborns who have elevated bilirubin levels (jaundice). The VNA requests a BiliChek monitor that allows for non-invasive testing of bilirubin levels. It is cost-effective and accurate, and it provides instantaneous results, eliminating the need to take samples to a lab and wait for results, which may delay treatment. The BiliChek monitor eliminates the need for new parents to drive to the doctor's office or lab to have their baby's bilirubin level checked.

WISH REQUESTED

- One BiliChek monitor @ \$2,500.

POPULATION SERVED

- Infants in Armstrong, Beaver, Butler, Lawrence, Mercer, northwestern Westmoreland and northern Allegheny Counties.

\$2,500

Western Pennsylvania Chapter of the National Hemophilia Foundation



The Western Pennsylvania Chapter of the National Hemophilia Foundation strives to enrich the lives of those with bleeding disorders in Western Pennsylvania. The Chapter requests seat belt ID straps that are used to notify medical professionals that the individual has a bleeding disorder in the event a critical situation occurs. They also request ice packs to have available for those who attend our educational events, as applying ice can help a bleeding joint feel better and minimize damage.

WISH REQUESTED

- 100 6"x10" ice packs @ \$1,047.
- 50 10"x13" ice packs @ \$1,269.
- 50 seat belt ID straps @ \$648.

POPULATION SERVED

- Those affected with bleeding disorders in Western Pennsylvania.

\$2,964



The Children's Institute of Pittsburgh's Project STAR foster care and family preservation programs protect the children in their care and provide them a safe and comfortable place to sleep. The Institute wishes for mattresses, beds and baby gates.

HUMAN SERVICES

Chartiers Community MH/MR Center, Inc.	52
Christian Layman Corps	52
Crisis Center North	53
Fishes and Loaves Cooperative Ministries	53
Glade Run Foundation	54
Healthy Start, Inc.	54
Knead Community Cafe	55
Little Sisters of the Poor	55
Off The Floor Pittsburgh	56
Pennsylvania Women Work	56
Residential Care Services, Inc.	57
St. Paul's Meals on Wheels Inc.	57
The Blessing Board	58
The Children's Institute of Pittsburgh	58
Westmoreland County Food Bank	59
Women's Center & Shelter of Greater Pittsburgh	59
YWCA Westmoreland County	60

Chartiers Community MH/MR Center, Inc.



Chartiers Community MH/MR Center, Inc. provides compassionate support to those in need who face behavioral health, co-occurring disorders, or intellectual or developmental disabilities as they transform their lives, including individuals/families dealing with substance abuse and homelessness. Many are underinsured and struggling to make ends meet. Chartiers Community MH/MR Center is requesting buckets of cleaning supplies and tote bags with personal care items. Personal care and cleanliness lead to better health, which is the goal of Center consumers.

WISH REQUESTED

- 60 buckets with cleaning supplies and rags @ \$1,500.
- 150 personal care items such as toothbrushes and toothpaste @ \$1,500.

POPULATION SERVED

- Chartiers Center serves 2,500 people in outpatient and substance abuse treatment services.

\$3,000

Christian Layman Corps



Christian Layman Corps (CLC) provides food, clothing, household items and furniture to needy families in southwestern Pennsylvania. Its Emergency Beds Program provides a needy Westmoreland County child with a bed (mattress, box spring and frame) or a crib (crib mattress and crib). Last year, CLC added handmade blankets and quilts, which were donated. However, the number is not consistent each month, and CLC cannot depend on them being donated. Christian Layman Corps is requesting to buy linens and pillows.

WISH REQUESTED

- 75 blankets @ \$1,050.
- 75 twin sheet sets @ \$1,125.
- 75 mattress protectors @ \$450.
- 75 pillows @ \$375.

POPULATION SERVED

- Westmoreland County children in need of a bed to sleep in.

\$3,000

Crisis Center North



Crisis Center North empowers victims of domestic violence and cultivates community attitudes and behaviors that break the cycle of violence. Many domestic violence victims don't leave their abusive relationships because they don't want to abandon their pet, a significant barrier to seeking a life free from violence. Crisis Center North is requesting funding to provide Animal Safety Kits to clients who want to ensure the protection of their pet. These packages will provide emergency and essential resources for caregivers' pets.

WISH REQUESTED

- 26 5-pound bags of Wysong Fundamentals dog and cat food, chicken @ \$372.
- 26 FrontLine Plus flea and tick medication for cats and dogs @ \$1,570.
- 26 PetSafe harnesses @ \$545.
- 26 Frisco orthopedic dog and cat beds @ \$494.

POPULATION SERVED

- Victims of domestic violence and their pets living in the community.

\$2,981

Fishes and Loaves Cooperative Ministries



Fishes and Loaves Cooperative Ministries brings fresh food into the Hazelwood community at reasonable prices to meet the need for healthy options in an urban food desert. Volunteers prepare and deliver Meals on Wheels weekdays to 60 individuals. If a consumer isn't home or doesn't answer the door, volunteers are forced to leave the food outside or take it back. Fishes and Loaves Cooperative Ministries is requesting small coolers and ice packs for clients, and new pots for its kitchen.

WISH REQUESTED

- 75 5-quart Coleman FlipLid coolers @ \$1,215.
- 5 24-packs of 8-ounce ice packs @ \$220.
- 2 24-quart stainless-steel pots with lids @ \$120.

POPULATION SERVED

- Individuals facing food insecurity in the Hazelwood area: parents, children, individuals with disabilities and seniors.

\$1,555

Glade Run Foundation



Glade Run Foundation provides educational, mental health, autism and cultural programs to more than 4,000 individuals each year through community-, school- and campus-based offerings. At its Zelienople campus, Glade Run's transitional day and residential programs for teens and young adults with autism and other disabilities include activities and classes at the nearby Rose Schneider YMCA. Glade Run seeks funding for annual YMCA membership where students can develop social skills, self esteem, emotional management, and emotional and physical wellness.

WISH REQUESTED

- Organizational annual YMCA Membership for Youth in Service @ \$2,430.

POPULATION SERVED

- Youth ages 5–21 in educational/mental health and autism/transitional programs.

\$2,430

Healthy Start, Inc.



Healthy Start improves maternal and child health and works to reduce poor birth outcomes and infant mortality in Allegheny County. Healthy Start seeks to create a Postpartum Care Package to help mothers adjust to life with a new baby and recover from delivery. The care package focuses on keeping Mom warm, and nurturing, pampering and honoring her. The goal is to help new moms focus on their own needs, and to promote healing and better care for her family, her baby and herself.

WISH REQUESTED

- 45 Rujiki extra-large heating pads @ \$1,170.
- 45 BOH mug and tea gift sets @ \$563.
- 45 lavender wax candles @ \$583.
- 45 hardcover journal and pen sets @ \$675.

POPULATION SERVED

- At least 1,000 pregnant and parenting women annually.

\$2,990

Knead Community Cafe



Knead Community Cafe alleviates food insecurity by providing healthy meals regardless of means and is the region's only pay-what-you-can restaurant. Strong bonds of community are formed through participation and engagement at the cafe. Once a month, the Cafe hosts the Breaking Bread Dinner, a community dinner that provides a free and delicious meal to all. These dinners have grown from an initial 125 people to as many as 275. Knead Cafe requests more seating and upholstery repairs.

WISH REQUESTED

- 69 new chairs @ \$2,760.
- Upholstery repairs @ \$238.

POPULATION SERVED

- Families walking from nearby public housing, the elderly, the widowed, volunteers, surrounding neighbors and Cafe supporters.

\$2,998

Little Sisters of the Poor



Little Sisters of the Poor serves the neediest elderly in a nursing home environment where all are welcomed, cared for as family and accompanied with dignity until God calls them to himself. National studies have shown that 54% of muscular-skeletal injuries to caregivers result from assisting a patient who is getting into or out of a chair. Little Sisters requests seven new lift chairs that each have a lift-and-lower function for the benefit of residents and their caregivers.

WISH REQUESTED

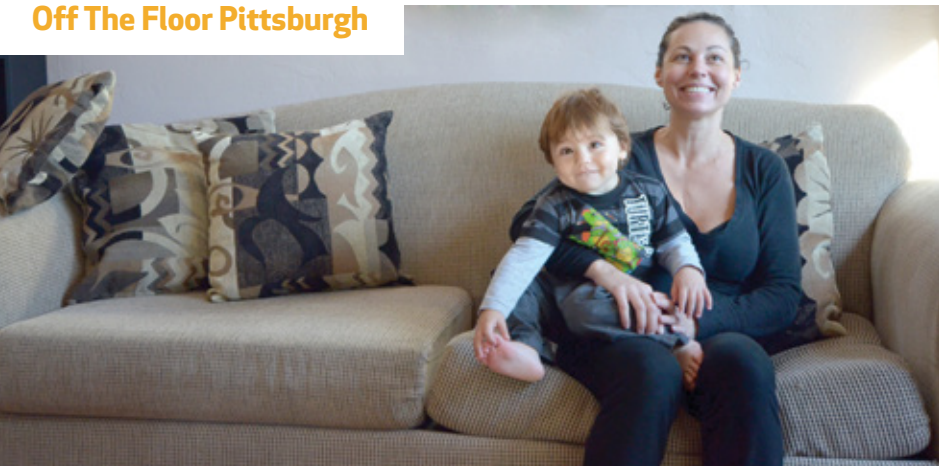
- Seven new lift chairs @ \$2,800.

POPULATION SERVED

- Elderly poor in Brighton Heights in nursing care and independent apartments.

\$2,800

Off The Floor Pittsburgh



Off The Floor Pittsburgh provides basic household furnishings to families in need to turn empty living spaces into homes. It serves people recovering from domestic violence, youth aging out of foster care, homeless veterans and fire victims who cannot afford basic household furnishings and essential items. Typical donations include sofas, beds, table and chair sets, and dressers. Off The Floor requests metal bed frames, bedding sets and kitchen essentials such as dishes, pots and pans, and coffee makers.

WISH REQUESTED

- 12 kitchen starter kits @ \$1,800.
- 12 queen-size bed-in-a-bag sets @ \$660.
- 12 metal bed frames @ \$540.

POPULATION SERVED

- Families and individuals in and around Allegheny County coming out of homelessness.

\$3,000

Pennsylvania Women Work



Pennsylvania Women Work is a workforce development organization that empowers women to achieve their professional and personal goals through life-changing programs. Many women enter the program feeling hopeless, lacking self-confidence and thinking they will never get a job. The organization helps women learn professional skills, find meaningful employment and earn a family-sustaining wage. PA Women Work requests funding for professional haircuts for 100 program graduates to enhance their self-image and help them feel confident, empowered and ready for their job interviews.

WISH REQUESTED

- 100 gift cards for haircuts @ \$3,000.

POPULATION SERVED

- Low-income women and single mothers who are unemployed or underemployed and re-entering the workforce.

\$3,000

Residential Care Services, Inc.



Residential Care Services provides housing to individuals who have mental health needs, giving them the skills and resources they need to live independently. Residential Care Services requests four upright freezers that would allow them to fully take advantage of the community food bank throughout the year, providing more food and other care essentials to the Residential Care homes.

WISH REQUESTED

- Four upright freezers @ \$2,596.

POPULATION SERVED

- Clients at Residential Care Services' six full-care, 24-hour homes.

\$2,596

St. Paul's Meals on Wheels Inc.



St. Paul's Meals on Wheels helps the elderly and disabled with home-delivered meals, providing a daily check-in, food and companionship. The majority of their volunteers are elderly and retired, and a few are disabled themselves. St. Paul's Meals on Wheels requests equipment that will assist them in preparing labor-intensive, large-quantity meals.

WISH REQUESTED

- One 20-quart commercial mixer @ \$800.
- One commercial deli/meat slicer @ \$550.
- One commercial vegetable peeler @ \$900.
- One PC with MS Office installed @ \$400.

POPULATION SERVED

- The Meals on Wheels volunteers and the 40 people, on average, they feed daily.

\$2,650

The Blessing Board



The Blessing Board provides donated furniture and household goods at no cost to members of our community who are in need. The Blessing Board requests 90 universal bed frames that adjust to twin-, full- and queen-size beds. The frames will provide families an opportunity to get mattresses and box springs off the floor, and shows families that they are loved, respected and treated with dignity during their time of need.

WISH REQUESTED

- 90 universal bed frames (twin, full or queen) @ \$3,000.

POPULATION SERVED

- Individuals served at The Blessing Board in need of a bed, the most requested item.

\$3,000

The Children's Institute of Pittsburgh



The Children's Institute of Pittsburgh is dedicated to improving the quality of life for children, young people and their families. The Institute requests necessities for its Project STAR foster care and family preservation program that will protect the children and give them a safe and comfortable place to sleep. It also requests journals to use in the behavioral health program to support communication between the therapist and child, youth or family member from session to session.

WISH REQUESTED

- Eight baby safety gates @ \$449.
- Eight pack and plays @ \$440.
- Eight toddler beds and mattresses @ \$1,000.
- 100 journals @ \$1,000.

POPULATION SERVED

- Families in Project STAR family preservation program and individuals in the Institute's behavioral health programs.

\$2,880

Westmoreland County Food Bank



The Westmoreland County Food Bank's mission is to enable all Westmoreland County residents who are hungry or at risk of hunger to have ready access to food. The Food Bank requests two upright freezers and two freezer blankets for their Food Pantry Distribution programs. Some food pantries need to hold food overnight and require adequate freezer storage space. For same-day deliveries, freezer blankets are better suited to keeping products cold on pallets until distribution.

WISH REQUESTED

- Two 21-cubic-foot freezers @ \$1,500.
- Two freezer blankets @ \$430.

POPULATION SERVED

- Low-income, food-insecure households receiving donated food.

\$1,930

Women's Center & Shelter of Greater Pittsburgh



The mission of Women's Center & Shelter of Greater Pittsburgh is to advance the safety and well-being of victims of intimate partner violence and to prevent and respond through social change to intimate partner violence. With 500 adults and children staying in the Shelter each year, the need for adequate essential items is constant. Women's Center & Shelter of Greater Pittsburgh requests items to meet the basic needs of Emergency Shelter residents, including baby items, toiletries, housewares and basic clothing items for adults.

WISH REQUESTED

- 50 baby items, including diapers, bottles, bibs, formula and clothing @ \$750.
- 50 linens, including bath towels, wash cloths, sheets and pillow cases @ \$500.
- 40 basic housewares sets, such as dishes, microwaves, toasters, pots and pans, and utensils @ \$1,000.
- 75 new women's clothing items: underwear, pajamas, slippers, robes, sweatpants and T-shirts @ \$750.

POPULATION SERVED

- Adults experiencing intimate partner violence and their children in Allegheny County.

\$3,000

YWCA Westmoreland County



YWCA Westmoreland County is dedicated to eliminating racism, empowering women, and promoting peace, justice, freedom and dignity for all. YWCA Westmoreland County, which is located at the Huff Mansion in Greensburg, requests general items that will help enhance its efforts. This includes a reciprocating saw, as it will need to be replaced soon; an iPad, for teaching in a number of continuing education technology classes; a pre-lit holiday tree, for the enjoyment of program participants and special event attendees; and a clothing steamer, for use at the YWCA Thrift Shop.

WISH REQUESTED

- One reciprocating saw @ \$41.
- One 9-foot pre-lit holiday tree @ \$399.
- One clothing steamer @ \$101.
- One 32GB Wi-Fi iPad @ \$568.

POPULATION SERVED

- YWCA technology class participants, Huff Mansion visitors and Thrift Shop customers.

\$599



Young people at Glade Run Foundation's transitional day and residential programs take part in recreational programs at the Rose Schneider YMCA. Glade Run wishes for more YMCA memberships for its youth.

Back row: Billy Podgorski, Matt Hiles, Monique Taylor, Trent Brennehan, Joey Broderick, Liam Wheeler. Front row: Brittany Conley, Hannah Mayer, Tom Nyunoya.



The houses of Washington's Landing glow in front of the Pittsburgh skyline on a cold morning.

ABOUT THE PITTSBURGH FOUNDATION

Established in 1945, The Pittsburgh Foundation is one of the nation's oldest community foundations and is the 14th largest of more than 750 community foundations across the United States. The Foundation's resources comprise endowment funds established by individuals, businesses and organizations with a passion for charitable giving and a deep commitment to the Pittsburgh community. The Foundation currently has more than 2,200 individual donor funds and, together

with its supporting organizations, assets of more than \$1.24 billion. Grantmaking benefits a broad spectrum of community life within Pittsburgh and beyond. The Foundation has strengthened its focus on community, the positive impact that can be achieved through grantmaking, the engagement of donors in critical regional issues and the convening of leadership in collaboration with funding and civic partners.

Thank you to our photographers. Many of the images in this Wish Book were graciously provided by the nonprofits. Additional nonprofit profile images are by Renee Rosensteel. Cityscape images are by David DiCello.



Trees frame the snow-covered North Shore in Pittsburgh.



Five PPG Place, Suite 250
Pittsburgh, PA 15222
412.391.5122
pittsburghfoundation.org